



SCOTS ICE AUSTRALIA
foodservice equipment

PRICE LIST 2025

900 SERIES COMMERCIAL COOKING EQUIPMENT, SALAMANDERS & REFRIGERATED CHEF BASES

VALID AS OF 1ST OCTOBER 2025

BARON

PROFESSIONAL **FOODSERVICE EQUIPMENT**

Manufactured in Italy, Baron Professional Cooking Equipment is built to a high level standard and is currently one of the leading European manufacturers in this field with a reputation for high quality and reliability.

Established in 1995 with the goal of designing a brand to satisfy and exceed the toughest requirements of professional catering.

With its vast range of integrated systems and equipment for professional kitchens, Baron quickly made its mark due to its perfect combination of high efficiency and sophisticated design.

All Baron equipment is built with modern technology combined with strength of stainless steel with Scotch Brite finish resulting in equipment that is sturdy, durable, hygienic and easy to clean.

Baron is the ideal partner for professional catering specialists thanks to its diversified and vast range of equipment, from its innovative heavy duty cooking ranges, available in both 700 mm and 900 mm depths, through to their range of salamander grills, convection and combination ovens.



With the publication of this pricelist all previous versions are considered void.

All prices shown are excluding GST. Specification, design and prices are subject to change without prior notice.

For further information see our general terms and conditions at www.scotsice.com.au

CONTENTS

GAS RANGES

Bench model gas cook tops	4
Gas cook tops with oven	6

ELECTRIC RANGES

Electric cook tops & ranges	8
Electric induction cook tops & woks	9

GAS TARGET TOPS

Gas target tops & ranges	10
--------------------------	----

ELECTRIC TARGET TOPS

Electric target tops & ranges	11
-------------------------------	----

GAS GRIDDLE PLATES

Mild steel gas griddle plates	12
Chrome gas griddle plates	14

ELECTRIC GRIDDLE PLATES

Mild steel electric griddle plates	16
Chrome electric griddle plates	18

PASTA COOKERS

Gas pasta cookers	20
Electric pasta cookers	21

DEEP FRYERS

Gas standard deep fryers	22
Electric standard deep fryers	23
Electric high performance deep fryers	24

MULTI FUNCTION BRATT PANS

TALENT multi function bratt pan	25
---------------------------------	----

CHARGRILLS & BBQS

Gas lava rock bbq	26
Electric bbqs	27

BRATT PANS

Gas bratt pans	28
Electric bratt pans	29

BOILING PANS STOCK POTS

Gas boiling pans stock pots	30
Electric boiling pans stock pots	31

Ovens

Gas & electric static ovens	32
-----------------------------	----

REFRIGERATED CHEF BASES

Refrigerated bases with drawers	33
---------------------------------	----

SALAMANDERS

Electric salamanders	34
Electric rapid & gas salamanders	35

ACCESSORIES

Neutral elements, cabinets & stands	36
Splashbacks, refrigerated bases & kick plates	37
Shelving, baskets & miscellaneous	38



900 GAS RANGES

BENCH MODEL GAS COOK TOPS AVAILABLE ON STAND OR CABINET (P.36), OR REFRIGERATED CHEF BASE (P.33)



MODEL NUMBER

Manufacturers Code

Q90PC/G4005

CR1015409

Q90PC/G8005

CR1015429

LIST PRICE (EXC. GST)

\$4,750.00

\$7,330.00

BURNERS

Number of burners

2

4

DIMENSIONS

Width

400 mm

800 mm

Depth

900 mm

900 mm

Height

250 mm

250 mm

FEATURES

Flame failure device

✓

✓

High power cast iron burners

✓

✓

Fully protected pilot light

✓

✓

IPX5 rated knobs

✓

✓

AISI304 s/steel construction

✓

✓

POWER

Gas connection

3/4"

3/4"

Gas power

54 Mj

108 Mj

Electric connection

-

-

Electric power

-

-

ACCESSORIES

Stainless steel floor stand

90CAV4

\$1,560.00

90CAV8

\$2,150.00

Stainless steel open cabinet

90VA400

\$1,660.00

90VA800

\$2,350.00

400mm cabinet door

QP12

\$690.00

QP12

\$690.00

Stainless steel double burner grid

CR1353959

\$560.00

CR1353959

\$560.00

Splashback (150H)

FC4

\$310.00

FC8

\$350.00

Electric ignition to burners*

ACC2F

\$485.00

ACC4F

\$540.00

WARRANTY

Parts (months) exclusions apply

24

24

Labour (months) exclusions apply

24

24

4

NOTES

*Electric ignition must be ordered at the same time as equipment - cannot be retrofit.
Water bath system available with electric ignition and drain kit - contact us for specifications and pricing.
For more accessories - see pages 36 - 38.
Accessories sold separately from equipment are subject to standard spare parts discount only.

900 GAS RANGES

BENCH MODEL GAS COOK TOPS AVAILABLE ON STAND OR CABINET (P.36), OR REFRIGERATED CHEF BASE (P.33)



Q90PC/G1205

CR1015449

Q90PC/G1605

CR1015469

\$9,800.00

\$12,590.00

6

8

1200 mm
900 mm
250 mm

1600 mm
900 mm
250 mm

✓
✓
✓
✓
✓

✓
✓
✓
✓
✓

3/4"
162 Mj
-
-

3/4"
216 Mj
-
-

90CAV12	\$2,130.00
90VA120	\$2,910.00
QP12	\$690.00
CR1353959	\$560.00
FC12	\$620.00
ACC6F	\$695.00

-	
90VA160	\$3,910.00
QP12	\$690.00
CR1353959	\$560.00
FC16	\$620.00
-	

24
24

24
24

NOTES

*Electric ignition must be ordered at the same time as equipment - cannot be retrofit.
Water bath system available with electric ignition and drain kit - contact us for specifications and pricing.
For more accessories - see pages 36 - 38.

Accessories sold separately from equipment are subject to standard spare parts discount only.

Scots Ice Australia Baron Queen9 Price List | Issue Date: 01/10/2025 | Supersedes all previous

900 GAS RANGES

GAS COOK TOPS WITH OVEN



MODEL NUMBER	Q90PCF/G8005	Q90PCF/GE8005
Manufacturers Code	CR1015649	CR1015659
LIST PRICE (EXC. GST)	\$11,970.00	\$12,790.00
BURNERS		
Number of burners	4	4
OVEN		
Oven type	gas	electric
Oven internal size	530 x 700 x 300 mm	530 x 700 x 300 mm
DIMENSIONS		
Width	800 mm	800 mm
Depth	900 mm	900 mm
Height	900 mm	900 mm
FEATURES		
Flame failure device	✓	✓
High power cast iron burners	✓	✓
Fully protected pilot light	✓	✓
IPX5 rated knobs	✓	✓
AISI304 s/steel construction	✓	✓
POWER		
Gas connection	3/4"	3/4"
Gas power	141 Mj	108 Mj
Electric connection	-	400V/3N 50-60 Hz
Electric power	-	6 kW
ACCESSORIES		
Stainless steel double burner grid	CR1353959 \$560.00	CR1353959 \$560.00
Splashback (150H)	FC8 \$350.00	FC8 \$350.00
Electric ignition to burners*	ACC4F \$540.00	ACC4F \$540.00
WARRANTY		
Parts (months) exclusions apply	24	24
Labour (months) exclusions apply	24	24

6 NOTES

*Electric ignition must be ordered at the same time as equipment - cannot be retrofit.

Water bath system available with electric ignition and drain kit - contact us for specifications and pricing.

For more accessories - see pages 36 - 38.

Accessories sold separately from equipment are subject to standard spare parts discount only.

Scots Ice Australia Baron Queen9 Price List | Issue Date: 01/10/2025 | Supersedes all previous versions

900 GAS RANGES

GAS COOK TOPS WITH OVEN



Q90PCF/G1205

CR1015689

\$16,240.00

6

gas

530 x 700 x 300 mm

1200 mm
900 mm
900 mm

✓
✓
✓
✓
✓

3/4"
193 Mj
-
-

CR1353959	\$560.00
FC12	\$620.00
ACC6F	\$695.00

24
24



Q90PCFL/G1205

CR1015729

\$17,070.00

6

gas

530 x 700 x 300 mm

1200 mm
900 mm
900 mm

✓
✓
✓
✓
✓

3/4"
196 Mj
-
-

CR1353959	\$560.00
FC12	\$620.00
ACC6F	\$695.00

24
24



Q90PCF/G1605

CR1015739

\$21,490.00

8

gas

530 x 700 x 300 mm (x2)

1600 mm
900 mm
900 mm

✓
✓
✓
✓
✓

3/4"
282 Mj
-
-

CR1353959	\$560.00
FC16	\$620.00
-	

24
24

NOTES

*Electric ignition must be ordered at the same time as equipment - cannot be retrofit.
Water bath system available with electric ignition and drain kit - contact us for specifications and pricing.
For more accessories - see pages 36 - 38.

Accessories sold separately from equipment are subject to standard spare parts discount only.

Scots Ice Australia Baron Queen9 Price List | Issue Date: 01/10/2025 | Supersedes all previous

900 ELECTRIC RANGES

ELECTRIC RANGES WITH CAST IRON BURNERS



MODEL NUMBER	Q90PC/E401		Q90PC/E801		Q90PCF/E801	
Manufacturers Code	CR1015779		CR1015789		CR1015839	
LIST PRICE (EXC. GST)	\$4,630.00		\$8,020.00		\$14,390.00	
BURNERS						
Number of burners	2		4		4	
Size of burner elements	300 x 300 mm		300 x 300 mm		300 x 300 mm	
OVEN						
Oven internal size	-		-		electric 530 x 700 x 300 mm	
DIMENSIONS						
Width	400 mm		800 mm		800 mm	
Depth	900 mm		900 mm		900 mm	
Height	250 mm		250 mm		900 mm	
FEATURES						
Water tight cast iron elements	✓		✓		✓	
Automatic safety thermostat	✓		✓		✓	
IPX5 rated knobs	✓		✓		✓	
AISI304 s/steel construction	✓		✓		✓	
POWER						
Gas connection	-		-		-	
Gas power	-		-		-	
Electric connection	400V/3N 50-60 Hz		400V/3N 50-60 Hz		400V/3N 50-60 Hz	
Electric power	8 kW		16 kW		22 kW	
ACCESSORIES						
Stainless steel floor stand	90CAV4	\$1,560.00	90CAV8	\$2,150.00	-	
Stainless steel open cabinet	90VA400	\$1,660.00	90VA800	\$2,350.00	-	
400mm cabinet door	QP12	\$690.00	QP12	\$690.00	-	
Splashback (150H)	FC4	\$310.00	FC8	\$350.00	FC8	\$350.00
WARRANTY						
Parts (months) exclusions apply	24		24		24	
Labour (months) exclusions apply	24		24		24	

8 NOTES

For more accessories - see pages 36 - 38.

Accessories sold separately from equipment are subject to standard spare parts discount only.

Scots Ice Australia Baron Queen9 Price List | Issue Date: 01/10/2025 | Supersedes all previous versions

900 ELECTRIC RANGES

BENCH MODEL ELECTRIC INDUCTION COOK TOPS



MODEL NUMBER	Q90PC/IND401		Q90PC/IND801		Q90PC/WOK400	
Manufacturers Code	CR1358359		CR1358379		CR1016059	
LIST PRICE (EXC. GST)	\$18,410.00		\$27,950.00		\$11,640.00	
BURNERS						
Number of burners	2		4		1	
Diameter of burners	280 mm		280 mm		300 mm	
DIMENSIONS						
Width	400 mm		800 mm		400 mm	
Depth	900 mm		900 mm		900 mm	
Height	250 mm		250 mm		250 mm	
FEATURES						
Watertight shatterproof glass	✓		✓		✓	
Overheating safety sensor	✓		✓		✓	
Heat mode indicator light	✓		✓		✓	
IPX5 rated knobs	✓		✓		✓	
AISI304 s/steel construction	✓		✓		✓	
POWER						
Gas connection	-		-		-	
Gas power	-		-		-	
Electric connection	400V/3N 50-60 Hz		400V/3N 50-60 Hz		400V/3N 50-60 Hz	
Electric power	10 kW		20 kW		5 kW	
ACCESSORIES						
Stainless steel floor stand	90CAV4	\$1,560.00	90CAV8	\$2,150.00	90CAV4	\$1,460.00
Stainless steel open cabinet	90VA400	\$1,660.00	90VA800	\$2,350.00	90VA400	\$1,660.00
400mm cabinet door	QP12	\$690.00	QP12	\$690.00	QP12	\$690.00
Splashback (150H)	FC4	\$310.00	FC8	\$350.00	FC4	\$310.00
WARRANTY						
Parts (months) exclusions apply	24		24		24	
Labour (months) exclusions apply	24		24		24	

NOTES

For more accessories - see pages 36 - 38.

Accessories sold separately from equipment are subject to standard spare parts discount only.

Scots Ice Australia Baron Queen9 Price List | Issue Date: 01/10/2025 | Supersedes all previous versions

900 GAS TARGET TOPS

GAS TARGET TOP RANGE



MODEL NUMBER	Q90TP/G800	Q90TPF/G800	Q90TPF/GE800
Manufacturers Code	CR1016089	CR1016299	CR1016309
LIST PRICE (EXC. GST)	\$7,610.00	\$12,760.00	\$13,240.00
HEAT ZONE			
Solid top size	full module	full module	full module
OVEN			
Oven type	-	gas	electric
Oven internal size	-	530 x 700 x 300 mm	530 x 700 x 300 mm
DIMENSIONS			
Width	800 mm	800 mm	800 mm
Depth	900 mm	900 mm	900 mm
Height	250 mm	900 mm	900 mm
FEATURES			
High powered central burner	✓	✓	✓
Safety valve with thermocouple	✓	✓	✓
IPX5 rated knobs	✓	✓	✓
AISI304 s/steel construction	✓	✓	✓
POWER			
Gas connection	3/4"	3/4"	3/4"
Gas power	50.4 Mj	80.4 Mj	50.4 Mj
Electric connection	-	-	400V/3N 50-60 Hz
Electric power	-	-	6 kW
ACCESSORIES			
Stainless steel floor stand	90CAV8 \$2,150.00	-	-
Stainless steel open cabinet	90VA800 \$2,350.00	-	-
400mm cabinet door	QP12 \$690.00	-	-
Splashback (150H)	FC8 \$350.00	FC8 \$350.00	FC8 \$350.00
WARRANTY			
Parts (months) exclusions apply	24	24	24
Labour (months) exclusions apply	24	24	24

900 ELECTRIC TARGET TOPS

ELECTRIC TARGET TOP RANGE



MODEL NUMBER	Q90TP/E800		Q90TPF/EE800	
Manufacturers Code	CR1016099		CR1016319	
LIST PRICE (EXC. GST)	\$12,870.00		\$19,570.00	
BURNERS				
Number of heat zones	4		4	
OVEN				
Oven type	-		electric	
Oven internal size	-		530 x 700 x 300 mm	
DIMENSIONS				
Width	800 mm		800 mm	
Depth	900 mm		900 mm	
Height	250 mm		900 mm	
FEATURES				
Polished chrome cooking plate 1.8mm	✓		✓	
Thermostat controls	✓		✓	
IPX5 rated knobs	✓		✓	
AISI304 s/steel construction	✓		✓	
POWER				
Gas connection	-		-	
Gas power	-		-	
Electric connection	400V/3N 50-60 Hz		400V/3N 50-60 Hz	
Electric power	16 kW		22 kW	
ACCESSORIES				
Stainless steel floor stand	90CAV8	\$2,150.00	-	
Stainless steel open cabinet	90VA800	\$2,350.00	-	
400mm cabinet door	QP12	\$690.00	-	
Splashback (150H)	FC8	\$350.00	FC8	\$350.00
WARRANTY				
Parts (months) exclusions apply	24		24	
Labour (months) exclusions apply	24		24	

NOTES

For more accessories - see pages 36 - 38.

Accessories sold separately from equipment are subject to standard spare parts discount only.

Scots Ice Australia Baron Queen9 Price List | Issue Date: 01/10/2025 | Supersedes all previous versions

900 GAS MILD STEEL GRIDDLE PLATES

MILD STEEL GAS GRIDDLE PLATES AVAILABLE ON STAND OR CABINET (P.36), OVEN (P.32) OR REFRIGERATED CHEF BASE (P.33)



MODEL NUMBER	Q90SFT/G400		Q90SFT/G800	
Manufacturers Code	CR1653889		CR1653989	
LIST PRICE (EXC. GST)	\$6,270.00		\$8,660.00	
COOKING SURFACE	mild steel		mild steel	
Plate type	smooth		smooth	
DIMENSIONS				
Width	400 mm		800 mm	
Depth	900 mm		900 mm	
Height	250 mm		250 mm	
FEATURES				
Piezo-electric ignition	✓		✓	
Flame failure device	✓		✓	
Thermostat control	✗		✗	
IPX5 rated knobs	✓		✓	
AISI304 s/steel construction	✓		✓	
POWER				
Gas connection	3/4"		3/4"	
Gas power	25.2 Mj		50.4 Mj	
Electric connection	-		-	
Electric power	-		-	
ACCESSORIES				
Stainless steel floor stand	90CAV4	\$1,560.00	90CAV8	\$2,150.00
Stainless steel open cabinet	90VA400	\$1,660.00	90VA800	\$2,350.00
400mm cabinet door	QP12	\$690.00	QP12	\$690.00
300mm cabinet door	-		-	
Splashback (150H)	FC4	\$310.00	FC8	\$350.00
Cleaning drawer	NXFTC4	\$420.00	NXFTC6/8	\$450.00
Plug for cleaning	NXFTT	\$300.00	NXFTT	\$300.00
WARRANTY				
Parts (months) exclusions apply	24		24	
Labour (months) exclusions apply	24		24	

NOTES

Above models come complete with rear splashguard and scraper.

Fully ribbed plate versions available on request - contact us for specifications and pricing.

For more accessories - see pages 36 - 38.

Accessories sold separately from equipment are subject to standard spare parts discount only.

900 GAS MILD STEEL GRIDDLE PLATES

MILD STEEL GAS GRIDDLE PLATES AVAILABLE ON STAND OR CABINET (P.36), OVEN (P.32) OR REFRIGERATED CHEF BASE (P.33)



Q90SFT/G820 CR1654029		Q90FTT/G1200 CR1016649		Q90FTT/G1220 CR1016669	
\$8,870.00		\$12,790.00		\$13,160.00	
mild steel 2/3 smooth - 1/3 ribbed		mild steel smooth		mild steel 2/3 smooth - 1/3 ribbed	
800 mm 900 mm 250 mm		1200 mm 900 mm 250 mm		1200 mm 900 mm 250 mm	
✓ ✓ x ✓ ✓		✓ ✓ ✓ ✓ ✓		✓ ✓ ✓ ✓ ✓	
3/4" 50.4 Mj - -		3/4" 114 Mj - -		3/4" 114 Mj - -	
90CAV8	\$2,150.00	90CAV12	\$2,130.00	90CAV12	\$2,130.00
90VA800	\$2,350.00	90VA120	\$2,910.00	90VA120	\$2,910.00
QP12	\$690.00	QP12	\$690.00	QP12	\$690.00
-	-	-	-	-	-
FC8	\$350.00	FC12	\$620.00	FC12	\$620.00
NXFTC6/8	\$450.00	NXFTC6/8	\$450.00	NXFTC6/8	\$450.00
NXFTT	\$300.00	NXFTT	\$300.00	NXFTT	\$300.00
24	24	24	24	24	24

NOTES

Above models come complete with rear splashguard and scraper.
Fully ribbed plate versions available on request - contact us for specifications and pricing.
For more accessories - see pages 36 - 38.

Accessories sold separately from equipment are subject to standard spare parts discount only.

Scots Ice Australia Baron Queen9 Price List | Issue Date: 01/10/2025 | Supersedes all previous versions

900 GAS CHROME GRIDDLE PLATES

CHROME GAS GRIDDLE PLATES AVAILABLE ON STAND OR CABINET (P.36), OVEN (P.32) OR REFRIGERATED CHEF BASE (P.33)



MODEL NUMBER	Q90SFTT/G405		Q90SFTT/G805	
Manufacturers Code	CR1654209		CR1654259	
LIST PRICE (EXC. GST)	\$7,550.00		\$11,080.00	
COOKING SURFACE	chrome		chrome	
Plate type	smooth		smooth	
DIMENSIONS				
Width	400 mm		800 mm	
Depth	900 mm		900 mm	
Height	250 mm		250 mm	
FEATURES				
Piezo-electric ignition	✓		✓	
Flame failure device	✓		✓	
Thermostat control	✓		✓	
IPX5 rated knobs	✓		✓	
AISI304 s/steel construction	✓		✓	
POWER				
Gas connection	3/4"		3/4"	
Gas power	36 Mj		72 Mj	
Electric connection	-		-	
Electric power	-		-	
ACCESSORIES				
Stainless steel floor stand	90CAV4	\$1,560.00	90CAV8	\$2,150.00
Stainless steel open cabinet	90VA400	\$1,660.00	90VA800	\$2,350.00
400mm cabinet door	QP12	\$690.00	QP12	\$690.00
300mm cabinet door	-		-	
Splashback (150H)	FC4	\$310.00	FC8	\$350.00
Cleaning drawer	NXFTC4	\$420.00	NXFTC6/8	\$450.00
Plug for cleaning	NXFTT	\$300.00	NXFTT	\$300.00
WARRANTY				
Parts (months) exclusions apply	24		24	
Labour (months) exclusions apply	24		24	

NOTES

Above models come complete with rear splashguard and scraper.

Fully ribbed plate versions available on request - contact us for specifications and pricing.

For more accessories - see pages 36 - 38.

Accessories sold separately from equipment are subject to standard spare parts discount only.

900 GAS CHROME GRIDDLE PLATES

CHROME GAS GRIDDLE PLATES AVAILABLE ON STAND OR CABINET (P.36), OVEN (P.32) OR REFRIGERATED CHEF BASE (P.33)



Q90SFTT/G825

CR1654279

Q90FTT/G1205

CR1016659

Q90FTT/G1225

CR1016679

\$11,290.00

\$14,860.00

\$15,200.00

chrome

2/3 smooth - 1/3 ribbed

chrome

smooth

chrome

2/3 smooth - 1/3 ribbed

800 mm

900 mm

250 mm

1200 mm

900 mm

250 mm

1200 mm

900 mm

250 mm

✓

✓

✓

✓

✓

✓

✓

✓

✓

✓

✓

✓

✓

✓

✓

3/4"

72 Mj

-

-

3/4"

114 Mj

-

-

3/4"

114 Mj

-

-

90CAV8

\$2,150.00

90VA800

\$2,350.00

QP12

\$690.00

-

FC8

\$350.00

NXFTC6/8

\$450.00

NXFTT

\$300.00

90CAV12

\$2,130.00

90VA120

\$2,910.00

QP12

\$690.00

-

FC12

\$620.00

NXFTC6/8

\$450.00

NXFTT

\$300.00

90CAV12

\$2,130.00

90VA120

\$2,910.00

QP12

\$690.00

-

FC12

\$620.00

NXFTC6/8

\$450.00

NXFTT

\$300.00

24

24

24

24

24

24

NOTES

Above models come complete with rear splashguard and scraper.

Fully ribbed plate versions available on request - contact us for specifications and pricing.

For more accessories - see pages 36 - 38.

Accessories sold separately from equipment are subject to standard spare parts discount only.

Scots Ice Australia Baron Queen9 Price List | Issue Date: 01/10/2025 | Supersedes all previous versions

900 ELECTRIC MILD STEEL GRIDDLE PLATES

MILD STEEL ELECTRIC GRIDDLE PLATES AVAILABLE ON STAND OR CABINET (P.36), OVEN (P.32) OR REFRIGERATED CHEF BASE (P.33)



MODEL NUMBER	Q90SFT/E400		Q90SFT/E600		Q90SFT/E620	
Manufacturers Code	CR1654689		CR1654709		CR1654729	
LIST PRICE (EXC. GST)	\$6,350.00		\$7,270.00		\$7,480.00	
COOKING SURFACE	mild steel		mild steel		mild steel	
Plate type	smooth		smooth		2/3 smooth - 1/3 ribbed	
DIMENSIONS						
Width	400 mm		600 mm		600 mm	
Depth	900 mm		900 mm		900 mm	
Height	250 mm		250 mm		250 mm	
FEATURES						
High power heating elements	✓		✓		✓	
Thermostat control	✓		✓		✓	
IPX5 rated knobs	✓		✓		✓	
AISI304 s/steel construction	✓		✓		✓	
POWER						
Gas connection	-		-		-	
Gas power	-		-		-	
Electric connection	400V/3N 50-60 Hz		400V/3N 50-60 Hz		400V/3N 50-60 Hz	
Electric power	7.5 kW		10.5 kW		10.5 kW	
ACCESSORIES						
Stainless steel floor stand	90CAV4	\$1,560.00	90CAV6	\$1,970.00	90CAV6	\$1,970.00
Stainless steel open cabinet	90VA400	\$1,660.00	90VA600	\$1,930.00	90VA600	\$1,930.00
400mm cabinet door	QP12	\$690.00	-	-	-	-
300mm cabinet door	-	-	QP13	\$650.00	QP13	\$650.00
Splashback (150H)	FC4	\$310.00	FC6	\$340.00	FC6	\$340.00
Cleaning drawer	NXFTC4	\$420.00	NXFTC6/8	\$450.00	NXFTC6/8	\$450.00
Plug for cleaning	NXFTT	\$300.00	NXFTT	\$300.00	NXFTT	\$300.00
WARRANTY						
Parts (months) exclusions apply	24		24		24	
Labour (months) exclusions apply	24		24		24	

900 ELECTRIC MILD STEEL GRIDDLE PLATES

MILD STEEL ELECTRIC GRIDDLE PLATES AVAILABLE ON STAND OR CABINET (P.36), OVEN (P.32) OR REFRIGERATED CHEF BASE (P.33)



Q90SFT/E800 CR1654739		Q90SFT/E820 CR1654759		Q90FT/E1200 CR1017409		Q90FT/E1220 CR1017429	
\$8,940.00		\$9,150.00		\$11,760.00		\$12,110.00	
mild steel smooth		mild steel 2/3 smooth - 1/3 ribbed		mild steel smooth		mild steel 2/3 smooth - 1/3 ribbed	
800 mm 900 mm 250 mm		800 mm 900 mm 250 mm		1200 mm 900 mm 250 mm		1200 mm 900 mm 250 mm	
✓ ✓ ✓ ✓		✓ ✓ ✓ ✓		✓ ✓ ✓ ✓		✓ ✓ ✓ ✓	
- - 400V/3N 50-60 Hz 15 kW		- - 400V/3N 50-60 Hz 15 kW		- - 400V/3N 50-60 Hz 16.2 kW		- - 400V/3N 50-60 Hz 16.2 kW	
90CAV8	\$2,150.00	90CAV8	\$2,150.00	90CAV12	\$2,130.00	90CAV12	\$2,130.00
90VA800	\$2,350.00	90VA800	\$2,350.00	90VA120	\$2,910.00	90VA120	\$2,910.00
QP12	\$690.00	QP12	\$690.00	QP12	\$690.00	QP12	\$690.00
-		-		-		-	
FC8	\$350.00	FC8	\$350.00	FC12	\$620.00	FC12	\$620.00
NXFTC6/8	\$450.00	NXFTC6/8	\$450.00	NXFTC6/8	\$450.00	NXFTC6/8	\$450.00
NXFTT	\$300.00	NXFTT	\$300.00	NXFTT	\$300.00	NXFTT	\$300.00
24 24		24 24		24 24		24 24	

NOTES

Above models come complete with rear splashguard and scraper.
Fully ribbed plate versions available on request - contact us for specifications and pricing.
For more accessories - see pages 36 - 38.

Accessories sold separately from equipment are subject to standard spare parts discount only.

Scots Ice Australia Baron Queen9 Price List | Issue Date: 01/10/2025 | Supersedes all previous versions

900 ELECTRIC CHROME GRIDDLE PLATES

CHROME ELECTRIC GRIDDLE PLATES AVAILABLE ON STAND OR CABINET (P.36), OVEN (P.32) OR REFRIGERATED CHEF BASE (P.33)



MODEL NUMBER	Q90SFT/E405		Q9S0FT/E605		Q9S0FT/E625	
Manufacturers Code	CR1654849		CR1654869		CR1654889	
LIST PRICE (EXC. GST)	\$7,060.00		\$8,260.00		\$8,470.00	
COOKING SURFACE	chrome		chrome		chrome	
Plate type	smooth		smooth		2/3 smooth - 1/3 ribbed	
DIMENSIONS						
Width	400 mm		600 mm		600 mm	
Depth	900 mm		900 mm		900 mm	
Height	250 mm		250 mm		250 mm	
FEATURES						
High power heating elements	✓		✓		✓	
Thermostat control	✓		✓		✓	
IPX5 rated knobs	✓		✓		✓	
AISI304 s/steel construction	✓		✓		✓	
POWER						
Gas connection	-		-		-	
Gas power	-		-		-	
Electric connection	400V/3N 50-60 Hz		400V/3N 50-60 Hz		400V/3N 50-60 Hz	
Electric power	7.5 kW		10.5 kW		10.5 kW	
ACCESSORIES						
Stainless steel floor stand	90CAV4	\$1,560.00	90CAV6	\$1,970.00	90CAV6	\$1,970.00
Stainless steel open cabinet	90VA400	\$1,660.00	90VA600	\$1,930.00	90VA600	\$1,930.00
400mm cabinet door	QP12	\$690.00	-	-	-	-
300mm cabinet door	-	-	QP13	\$650.00	QP13	\$650.00
Splashback (150H)	FC4	\$310.00	FC6	\$340.00	FC6	\$340.00
Cleaning drawer	NXFTC4	\$420.00	NXFTC6/8	\$450.00	NXFTC6/8	\$450.00
Plug for cleaning	NXFTT	\$300.00	NXFTT	\$300.00	NXFTT	\$300.00
WARRANTY						
Parts (months) exclusions apply	24		24		24	
Labour (months) exclusions apply	24		24		24	

NOTES

Above models come complete with rear splashguard and scraper.

Fully ribbed plate versions available on request - contact us for specifications and pricing.

For more accessories - see pages 36 - 38.

Accessories sold separately from equipment are subject to standard spare parts discount only.

900 ELECTRIC CHROME GRIDDLE PLATES

CHROME ELECTRIC GRIDDLE PLATES AVAILABLE ON STAND OR CABINET (P.36), OVEN (P.32) OR REFRIGERATED CHEF BASE (P.33)



Q90SFT/E805

CR1654899

\$10,220.00

chrome
smooth

800 mm
900 mm
250 mm

✓
✓
✓
✓

-
-
400V/3N 50-60 Hz
15 kW

90CAV8 **\$2,150.00**
90VA800 **\$2,350.00**
QP12 **\$690.00**
-
FC8 **\$350.00**
NXFTC6/8 **\$450.00**
NXFTT **\$300.00**

24
24

Q90SFT/E825

CR1654919

\$10,440.00

chrome
2/3 smooth - 1/3 ribbed

800 mm
900 mm
250 mm

✓
✓
✓
✓

-
-
400V/3N 50-60 Hz
15 kW

90CAV8 **\$2,150.00**
90VA800 **\$2,350.00**
QP12 **\$690.00**
-
FC8 **\$350.00**
NXFTC6/8 **\$450.00**
NXFTT **\$300.00**

24
24

Q90FT/E1205

CR1017419

\$13,810.00

chrome
smooth

1200 mm
900 mm
250 mm

✓
✓
✓
✓

-
-
400V/3N 50-60 Hz
16.2 kW

90CAV12 **\$2,130.00**
90VA120 **\$2,910.00**
QP12 **\$690.00**
-
FC12 **\$620.00**
NXFTC6/8 **\$450.00**
NXFTT **\$300.00**

24
24

Q90FT/E1225

CR1017439

\$14,150.00

chrome
2/3 smooth - 1/3 ribbed

1200 mm
900 mm
250 mm

✓
✓
✓
✓

-
-
400V/3N 50-60 Hz
16.2 kW

90CAV12 **\$2,130.00**
90VA120 **\$2,910.00**
QP12 **\$690.00**
-
FC12 **\$620.00**
NXFTC6/8 **\$450.00**
NXFTT **\$300.00**

24
24

NOTES

Above models come complete with rear splashguard and scraper.
Fully ribbed plate versions available on request - contact us for specifications and pricing.
For more accessories - see pages 36 - 38.

Accessories sold separately from equipment are subject to standard spare parts discount only.

Scots Ice Australia Baron Queen9 Price List | Issue Date: 01/10/2025 | Supersedes all previous versions

900 PASTA COOKERS

GAS PASTA COOKERS - BASKETS NOT INCLUDED



MODEL NUMBER	Q90CP/G400	Q90CP/G800
Manufacturers Code	CR1018269	CR1018289
LIST PRICE (EXC. GST)	\$9,020.00	\$14,790.00
CAPACITY	40 L	40 L + 40 L
Number of basins	1	2
DIMENSIONS		
Width	400 mm	800 mm
Depth	900 mm	900 mm
Height	900 mm	900 mm
FEATURES		
AISI 316 stainless steel tank	✓	✓
Safety thermostat	✓	✓
IPX5 rated knobs	✓	✓
AISI304 s/steel construction	✓	✓
POWER		
Gas connection	3/4"	3/4"
Gas power	60 Mj	120 Mj
Electric connection	-	-
Electric power	-	-
ACCESSORIES		
1/6 basket kit (6 pcs)	9A \$1,740.00	9A \$1,740.00
1/3 basket kit (3 pcs)	9B \$1,150.00	9B \$1,150.00
1/2 basket kit (2 pcs)	9C \$950.00	9C \$950.00
Lid	CVCP40 \$210.00	CVCP40 \$210.00
Bottom grid	9GFCP \$210.00	9GFCP \$210.00
Splashback (150H)	FC4 \$310.00	FC8 \$350.00
WARRANTY		
Parts (months) exclusions apply	24	24
Labour (months) exclusions apply	24	24

NOTES

Above models come complete with water tap, spout and overflow with drain.

Please note that pasta baskets are not included as standard.

For more accessories - see pages 36 - 38.

Accessories sold separately from equipment are subject to standard spare parts discount only.

900 PASTA COOKERS

ELECTRIC PASTA COOKERS - BASKETS NOT INCLUDED



Q90CP/E400

CR1018309

Q90CP/E800

CR1018329

\$8,310.00

\$13,320.00

40 L

1

40 L + 40 L

2

400 mm
900 mm
900 mm

800 mm
900 mm
900 mm



400V/3N 50-60 Hz
9 kW

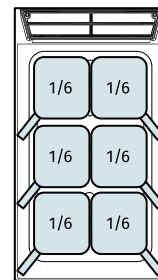
400V/3N 50-60 Hz
18 kW

9A	\$1,740.00
9B	\$1,150.00
9C	\$950.00
CVCP40	\$210.00
9GFCP	\$210.00
FC4	\$310.00

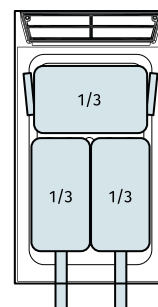
9A	\$1,740.00
9B	\$1,150.00
9C	\$950.00
CVCP40	\$210.00
9GFCP	\$210.00
FC8	\$350.00

24
24

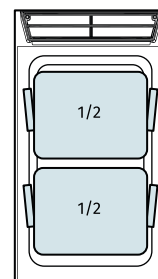
24
24



9A
BASKET KIT



9B
BASKET KIT



9C
BASKET KIT

NOTES

Above models come complete with water tap, spout and overflow with drain.

Please note that pasta baskets are not included as standard.

For more accessories - see pages 36 - 38.

Accessories sold separately from equipment are subject to standard spare parts discount only.

Scots Ice Australia Baron Queen9 Price List | Issue Date: 01/10/2025 | Supersedes all previous versions

900 STANDARD FRYERS

GAS STANDARD DEEP FRYERS



MODEL NUMBER	Q90FRI/G423	Q90FRI/G610	Q90FRI/G823
Manufacturers Code	CR1353779	CR1018369	CR1353789
LIST PRICE (EXC. GST)	\$9,690.00	\$12,740.00	\$16,350.00
CAPACITY	23 L	10 L + 10 L	23 L + 23 L
Number of basins	1	2	2
DIMENSIONS			
Width	400 mm	600 mm	800 mm
Depth	900 mm	900 mm	900 mm
Height	900 mm	900 mm	900 mm
FEATURES			
Large capacity cooking pots	✓	✓	✓
Automatic temp. adjustment	✓	✓	✓
Fire proof safety thermostat	✓	✓	✓
Oil drain valves	✓	✓	✓
Support for baskets	✓	✓	✓
IPX5 rated knobs	✓	✓	✓
AISI304 s/steel construction	✓	✓	✓
POWER			
Gas connection	3/4"	3/4"	3/4"
Gas power	76 Mj	72 Mj	152 Mj
Electric connection	-	-	-
Electric power	-	-	-
INCLUSIONS			
Baskets	2	2	4
ACCESSORIES			
Oil tray	9BRO \$550.00	9BRO \$550.00	9BRO \$550.00
Splashback (150H)	FC4 \$310.00	FC6 \$340.00	FC8 \$350.00
WARRANTY			
Parts (months) exclusions apply	24	24	24
Labour (months) exclusions apply	24	24	24

900 STANDARD FRYERS

ELECTRIC STANDARD DEEP FRYERS



Q90FRI/E422

CR1353799

Q90FRI/E610

CR1018429

Q90FRI/E822

CR1353809

\$8,260.00

\$12,890.00

\$14,080.00

22 L

1

10 L + 10 L

2

22 L + 22 L

2

400 mm
900 mm
900 mm

600 mm
900 mm
900 mm

800 mm
900 mm
900 mm

✓
✓
✓
✓
✓
✓
✓
✓

✓
✓
✓
✓
✓
✓
✓
✓

✓
✓
✓
✓
✓
✓
✓
✓

-
-
400V/3N 50-60 Hz
18 kW

-
-
400V/3N 50-60 Hz
18 kW

-
-
400V/3N 50-60 Hz
36 kW

2

2

4

9BRO

\$550.00

9BRO

\$550.00

9BRO

\$550.00

24
24

24
24

24
24

NOTES

For more accessories - see pages 36 - 38.

Accessories sold separately from equipment are subject to standard spare parts discount only.

Scots Ice Australia Baron Queen9 Price List | Issue Date: 01/10/2025 | Supersedes all previous versions

900 HIGH PERFORMANCE EVO FRYERS

ELECTRIC HIGH PERFORMANCE DEEP FRYERS WITH SOLID STATE CONTROLS & FILTRATION SYSTEM



MODEL NUMBER	90FREV/E422	90FREV/E422F	90FREV/E422FA
Manufacturers Code	CR1209909	CR1209919	CR1209939
LIST PRICE (EXC. GST)	\$13,440.00	\$19,760.00	\$23,530.00
CAPACITY	22 L	22 L	22 L
DIMENSIONS			
Width	400 mm	400 mm	400 mm
Depth	900 mm	900 mm	900 mm
Height	900 mm	900 mm	900 mm
FEATURES			
7" touch screen controls	✓	✓	✓
Safety thermostat	✓	✓	✓
Oil circulation and filtering	✗	✓	✓
Automatic basket lift	✗	✗	✓
Cold zone + foam overflow	✓	✓	✓
IPX5 rated knobs	✓	✓	✓
AISI304 s/steel construction	✓	✓	✓
POWER			
Gas connection	-	-	-
Gas power	-	-	-
Electric connection	400V/3N 50-60 Hz	400V/3N 50-60 Hz	400V/3N 50-60 Hz
Electric power	22 kW	22 kW	22 kW
INCLUSIONS			
Baskets (1/2)	2	2	2
Lid and residue plate	✓	✓	✓
ACCESSORIES			
1/2 basket (1 pcs)	QCF22/23P \$265.00	QCF22/23P \$265.00	QCF22/23P \$265.00
1/1 basket (1 pcs)	QCF22/23 \$350.00	QCF22/23 \$350.00	QCF22/23 \$350.00
WARRANTY			
Parts (months) exclusions apply	24	24	24
Labour (months) exclusions apply	24	24	24

900 MULTI FUNCTION BRATT PANS

TALENT MULTI FUNCTION BRATT PANS



MODEL NUMBER	Q90MT/E400	Q90MT/E800
Manufacturers Code	CR1659829	CR1659839
LIST PRICE (EXC. GST)	\$26,780.00	\$40,930.00
CAPACITY		
Tank capacity	17 L (1/1GN)	36 L (2 x 1/1GN)
Cooking surface	580 x 305 mm	680 x 580 mm
DIMENSIONS		
Width	400 mm	800 mm
Depth	900 mm	900 mm
Height	900 mm	900 mm
FEATURES		
7 versatile cooking functions	✓	✓
Touch screen control	✓	✓
Automatic water fill	✓	✓
USB ports (x2)	✓	✓
IPX5 rated knobs	✓	✓
AISI304 s/steel construction	✓	✓
INCLUSIONS		
Lid	✓	✓
Bottom grid	✓	✓
Steamer baskets	✓	✓
Pasta cooker baskets	✓	✓
Slow cooker stand	✓	✓
Spatula	✓	✓
POWER		
Electric connection	400V/3N 50-60 Hz	400V/3N 50-60 Hz
Electric power	10 kW	20 kW
WARRANTY		
Parts (months) exclusions apply	24	24
Labour (months) exclusions apply	24	24

NOTES

For more accessories - see pages 36 - 38.

Accessories sold separately from equipment are subject to standard spare parts discount only.

Scots Ice Australia Baron Queen9 Price List | Issue Date: 01/10/2025 | Supersedes all previous versions

900 CHARGRILLS & BBQS

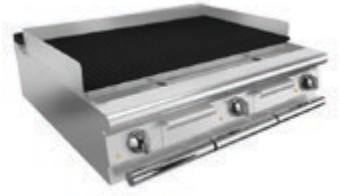
GAS LAVA ROCK BBQ AVAILABLE ON STAND OR CABINET (P.36), OR REFRIGERATED CHEF BASE (P.33)



MODEL NUMBER	Q90SGL/G403		Q90SGL/G803		Q90SGL/G123	
Manufacturers Code	CR1657709		CR1657749		CR1657789	
LIST PRICE (EXC. GST)	\$8,240.00		\$12,100.00		\$14,880.00	
BURNERS						
Number of burners	1		2		3	
DIMENSIONS						
Width	400 mm		800 mm		1200 mm	
Depth	900 mm		900 mm		900 mm	
Height	250 mm		250 mm		250 mm	
FEATURES						
High power s/steel burners	✓		✓		✓	
Cast iron grill	✓		✓		✓	
Lava rocks with radiant features	✓		✓		✓	
IPX5 rated knobs	✓		✓		✓	
AISI304 s/steel construction	✓		✓		✓	
POWER						
Gas connection	3/4"		3/4"		3/4"	
Gas power	43.2 Mj		86.4 Mj		129.6 Mj	
Electric connection	-		-		-	
Electric power	-		-		-	
ACCESSORIES						
Stainless steel floor stand	90CAV4	\$1,560.00	90CAV8	\$2,150.00	90CAV12	\$2,130.00
Stainless steel open cabinet	90VA400	\$1,660.00	90VA800	\$2,350.00	90VA120	\$2,910.00
400mm cabinet door	QP12	\$690.00	QP12	\$690.00	QP12	\$690.00
Splashback (150H)	FC4	\$310.00	FC8	\$350.00	FC12	\$620.00
Bag of volcanic rocks (4kg)	QCPL6	\$150.00	QCPL6	\$150.00	QCPL6	\$150.00
Smoker box (1pcs)	-		Q9AF	\$1,055.00	Q9AF	\$1,055.00
WARRANTY						
Parts (months) exclusions apply	24		24		24	
Labour (months) exclusions apply	24		24		24	

900 CHARGRILLS & BBQS

ELECTRIC BBQ AVAILABLE ON STAND OR CABINET (P.36), OR REFRIGERATED CHEF BASE (P.33)



MODEL NUMBER	Q90SG/E403P		Q90SG/E803P		Q90SG/E123P	
Manufacturers Code	CR1772399		CR1772439		CR1772479	
LIST PRICE (EXC. GST)	\$8,010.00		\$11,730.00		\$15,590.00	
BURNERS						
Number of burners	1		2		3	
DIMENSIONS						
Width	400 mm		800 mm		1200 mm	
Depth	900 mm		900 mm		900 mm	
Height	250 mm		250 mm		250 mm	
FEATURES						
High power heating elements	✓		✓		✓	
Cast iron grill	✓		✓		✓	
IPX5 rated knobs	✓		✓		✓	
AISI304 s/steel construction	✓		✓		✓	
POWER						
Gas connection	-		-		-	
Gas power	-		-		-	
Electric connection	400V/3N 50-60 Hz		400V/3N 50-60 Hz		400V/3N 50-60 Hz	
Electric power	8.4 kW		16.8 kW		25.2 kW	
ACCESSORIES						
Stainless steel floor stand	90CAV4	\$1,560.00	90CAV8	\$2,150.00	90CAV12	\$2,130.00
Stainless steel open cabinet	90VA400	\$1,660.00	90VA800	\$2,350.00	90VA120	\$2,910.00
400mm cabinet door	QP12	\$690.00	QP12	\$690.00	QP12	\$690.00
Splashback (150H)	FC4	\$310.00	FC8	\$350.00	FC12	\$620.00
Smoker box (1pcs)	-		Q9AF	\$1,055.00	Q9AF	\$1,055.00
WARRANTY						
Parts (months) exclusions apply	24		24		24	
Labour (months) exclusions apply	24		24		24	

NOTES

For more accessories - see pages 36 - 38.

Accessories sold separately from equipment are subject to standard spare parts discount only.

Scots Ice Australia Baron Queen9 Price List | Issue Date: 01/10/2025 | Supersedes all previous versions

900 BRATT PANS

GAS BRATT PANS



MODEL NUMBER	Q90BR/G80	Q90BR/GM80	Q90BR/GM120
Manufacturers Code	CR1018189	CR1018209	CR1018229
LIST PRICE (EXC. GST)	\$16,770.00	\$17,560.00	\$21,290.00
CAPACITY			
Tank capacity	80 L	80 L	120 L
TILTING			
Manual tilting	✓	✗	✗
Motorised tilting	✗	✓	✓
DIMENSIONS			
Width	800 mm	800 mm	1200 mm
Depth	900 mm	900 mm	900 mm
Height	900 mm	900 mm	900 mm
FEATURES			
Safety shut off device	✓	✓	✓
Self-balanced lid	✓	✓	✓
Automatic water filling	✓	✓	✓
Adjustable temp. 100 to 280°C	✓	✓	✓
IPX5 rated knobs	✓	✓	✓
AISI304 s/steel construction	✓	✓	✓
POWER			
Gas connection	3/4"	3/4"	3/4"
Gas power	73.6 Mj	73.6 Mj	86 Mj
Electric connection	230V/1N 50 Hz	230V/1N 50 Hz	230V/1N 50 Hz
Electric power	0.2 kW	0.2 kW	0.2 kW
ACCESSORIES			
Splashback (150H)	FC8 \$350.00	FC8 \$350.00	FC12 \$620.00
WARRANTY			
Parts (months) exclusions apply	24	24	24
Labour (months) exclusions apply	24	24	24

900 BRATT PANS

ELECTRIC BRATT PANS



MODEL NUMBER	Q90BR/E80	Q90BR/EM80	Q90BR/EM120
Manufacturers Code	CR1018149	CR1018169	CR1018249
LIST PRICE (EXC. GST)	\$17,170.00	\$18,190.00	\$21,070.00
CAPACITY			
Tank capacity	80 L	80 L	120 L
TILTING			
Manual tilting	✓	✗	✗
Motorised tilting	✗	✓	✓
DIMENSIONS			
Width	800 mm	800 mm	1200 mm
Depth	900 mm	900 mm	900 mm
Height	900 mm	900 mm	900 mm
FEATURES			
Safety shut off device	✓	✓	✓
Self-balanced lid	✓	✓	✓
Automatic water filling	✓	✓	✓
Adjustable temp. 100 to 280°C	✓	✓	✓
IPX5 rated knobs	✓	✓	✓
AISI304 s/steel construction	✓	✓	✓
POWER			
Gas connection	-	-	-
Gas power	-	-	-
Electric connection	400V/3N 50-60 Hz	400V/3N 50-60 Hz	400V/3N 50-60 Hz
Electric power	9 kW	9 kW	13.5 kW
ACCESSORIES			
Splashback (150H)	FC8 \$350.00	FC8 \$350.00	FC12 \$620.00
WARRANTY			
Parts (months) exclusions apply	24	24	24
Labour (months) exclusions apply	24	24	24

NOTES

For more accessories - see pages 36 - 38.

Accessories sold separately from equipment are subject to standard spare parts discount only.

Scots Ice Australia Baron Queen9 Price List | Issue Date: 01/10/2025 | Supersedes all previous versions

900 BOILING PANS STOCK POTS

GAS DIRECT HEATING AND INDIRECT BOILING PANS STOCK POTS



MODEL NUMBER	Q90PF/G150	Q90PF/GI150S
Manufacturers Code	CR1018029	CR1356119
LIST PRICE (EXC. GST)	\$15,080.00	\$20,330.00
CAPACITY		
Tank capacity	150 L	150 L
HEATING		
Heating type	direct heating	indirect heating
DIMENSIONS		
Width	800 mm	800 mm
Depth	900 mm	900 mm
Height	900 mm	900 mm
FEATURES		
AISI316 s/steel pan bottom	✓	✓
Water filled via solenoid valves	✓	✓
Safety shut off thermostat	✓	✓
IPX5 rated knobs	✓	✓
AISI304 s/steel construction	✓	✓
POWER		
Gas connection	3/4"	3/4"
Gas power	76 Mj	76 Mj
Electric connection	230V/1N 50 Hz	230V/1N 50 Hz
Electric power	0.2 kW	0.2 kW
ACCESSORIES		
Splashback (150H)	FC8 \$350.00	FC8 \$350.00
Basket for pasta	9C15 \$3,180.00	9C15 \$3,180.00
Basket for vegetables	9CV15 \$2,210.00	9CV15 \$2,210.00
Drain funnel	9-I15 \$430.00	9-I15 \$430.00
WARRANTY		
Parts (months) exclusions apply	24	24
Labour (months) exclusions apply	24	24

900 BOILING PANS STOCK POTS

ELECTRIC DIRECT HEATING AND INDIRECT HEATING BOILING PANS STOCK POTS



MODEL NUMBER

Manufacturers Code

Q90PF/ED150

CR1018109

Q90PF/EI150S

CR1356159

LIST PRICE (EXC. GST)

\$14,890.00

\$20,080.00

CAPACITY

Tank capacity

150 L

150 L

HEATING

Heating type

direct heating

indirect heating

DIMENSIONS

Width

800 mm

800 mm

Depth

900 mm

900 mm

Height

900 mm

900 mm

FEATURES

AISI316 s/steel pan bottom
Water filled via solenoid valves
Safety shut off thermostat
IPX5 rated knobs
AISI304 s/steel construction

✓
✓
✓
✓
✓

✓
✓
✓
✓
✓

POWER

Gas connection

-

-

Gas power

-

-

Electric connection

400V/3N 50-60 Hz

400V/3N 50-60 Hz

Electric power

12 kW

21 kW

ACCESSORIES

Splashback (150H)

FC8 **\$350.00**

FC8 **\$350.00**

Basket for pasta

9C15 **\$3,180.00**

9C15 **\$3,180.00**

Basket for vegetables

9CV15 **\$2,210.00**

9CV15 **\$2,210.00**

Drain funnel

9-I15 **\$430.00**

9-I15 **\$430.00**

WARRANTY

Parts (months) exclusions apply

24

24

Labour (months) exclusions apply

24

24

NOTES

For more accessories - see pages 36 - 38.

Accessories sold separately from equipment are subject to standard spare parts discount only.

Scots Ice Australia Baron Queen9 Price List | Issue Date: 01/10/2025 | Supersedes all previous versions

900 OVENS

GAS & ELECTRIC STATIC OVENS



MODEL NUMBER	Q90FO/G800	Q90FO/E800
Manufacturers Code	CR1018799	CR1018779
LIST PRICE (EXC. GST)	\$7,570.00	\$7,220.00
OVEN		
Oven internal size	530 x 700 x 300 mm	530 x 700 x 300 mm
DIMENSIONS		
Width	800 mm	800 mm
Depth	830 mm	830 mm
Height	620 mm	620 mm
FEATURES		
Suitable to mount bench top appliances	✓	✓
Thermally insulated	✓	✓
3 anti-tipping guides for 1/1GN containers	✓	✓
Insulated stainless steel door	✓	✓
Heavy-duty self-balanced door hinges	✓	✓
Full length ergonomic handle	✓	✓
AISI304 s/steel construction	✓	✓
POWER		
Gas connection	3/4"	-
Gas power	30 Mj	-
Electric connection	-	400V/3N 50-60 Hz
Electric power	-	6 kW
ACCESSORIES		
Chrome wired oven shelf	9GF \$200.00	9GF \$200.00
WARRANTY		
Parts (months) exclusions apply	24	24
Labour (months) exclusions apply	24	24

900 REFRIGERATED CHEF BASES

CHEFS REFRIGERATED BASES WITH DRAWERS FOR MOUNTING COOKING APPLIANCES ON TOP



MODEL NUMBER	BR912 TNN	BR912 BT
Manufacturers Code	-	-
LIST PRICE (EXC. GST)	\$16,580.00	\$16,930.00
TEMPERATURE		
Temperature range °C	-2 / +8	-15 / -20
DRAWERS		
Number of drawers	2	2
Capacity of drawers	2/1 GN	2/1 GN
DIMENSIONS		
Width	1200 mm	1200 mm
Depth	840 mm	840 mm
Height	590 mm	590 mm
FEATURES		
Automatic defrost	✓	✓
Electronic temperature control	✓	✓
Insulation thickness 50 mm	✓	✓
Easy access to the components	✓	✓
Dust filter	✓	✓
AISI304 s/steel construction	✓	✓
POWER		
Gas connection	-	-
Gas power	-	-
Electric connection	230V/1N 50 Hz	230V/1N 50 Hz
Electric power	0.49 kW	0.6 kW
WARRANTY		
Parts (months) exclusions apply	24	24
Labour (months) exclusions apply	24	24

NOTES

For more accessories - see pages 36 - 38.

Accessories sold separately from equipment are subject to standard spare parts discount only.

Scots Ice Australia Baron Queen9 Price List | Issue Date: 01/10/2025 | Supersedes all previous versions

SALAMANDERS

ELECTRIC SALAMANDERS



MODEL NUMBER	SEF2/2	SE40/0CB	SE60/0CB
Manufacturers Code	-	-	-
LIST PRICE (EXC. GST)	\$3,300.00	\$6,780.00	\$7,590.00
COOKING SURFACE			
Dimensions of cooking surface	600 x 350 mm	400 x 350 mm	600 x 350 mm
DIMENSIONS			
Width	790 mm	400 mm	600 mm
Depth	400 mm	450 mm	450 mm
Height	390 mm	500 mm	500 mm
FEATURES			
Adjustable height	✗	✓	✓
Fixed height	✓	✗	✗
Incoloy heating elements	✓	✓	✓
AISI304 s/steel construction	✓	✓	✓
POWER			
Gas connection	-	-	-
Gas power	-	-	-
Electric connection	230V/1N 50 Hz	230V/1N 50 Hz	230V/1N 50 Hz
Electric power	20AMP / 4 kW	10AMP / 2 kW	20AMP / 4 kW
ACCESSORIES			
Wall bracket	9008 \$300.00	9003 \$300.00	9003 \$300.00

WARRANTY			
Parts (months) exclusions apply	24	24	24
Labour (months) exclusions apply	24	24	24

SALAMANDERS

ELECTRIC RAPID & GAS SALAMANDER



MODEL NUMBER	SDSM6E	SG/0
Manufacturers Code	-	-
LIST PRICE (EXC. GST)	\$11,990.00	\$7,610.00
COOKING SURFACE		
Dimensions of cooking surface	540 x 365 mm or 1/1GN	575 x 400 mm
DIMENSIONS		
Width	600 mm	750 mm
Depth	530 mm	400 mm
Height	500 mm	460 mm
FEATURES		
Stainless steel mesh radiant elements	✗	✓
Pilot flame and safety thermocouple	✗	✓
Adjustable height 260/160 mm	✓	✗
Control panel with digital display	✓	✗
Rapid warm up (7 sec)	✓	✗
Elements made of tungsten filament	✓	✗
AISI304 s/steel construction	✓	✓
POWER		
Gas connection	-	3/4"
Gas power	-	26 Mj
Electric connection	400V/3N 50-60 Hz	-
Electric power	4.5 kW	-
ACCESSORIES		
Wall bracket	-	9013 \$410.00
WARRANTY		
Parts (months) exclusions apply	24	24
Labour (months) exclusions apply	24	24

NOTES

For more accessories - see pages 36 - 38.

Accessories sold separately from equipment are subject to standard spare parts discount only.

Scots Ice Australia Baron Queen9 Price List | Issue Date: 01/10/2025 | Supersedes all previous versions

900 ACCESSORIES

NEUTRAL ELEMENTS, CABINETS & STANDS



NEUTRAL TOPS

200mm wide neutral top with fixed front	Q90NE/200	\$2,020.00
400mm wide neutral top with fixed front	Q90NE/400	\$2,460.00
600mm wide neutral top with fixed front	Q90NE/600	\$2,890.00
800mm wide neutral top with fixed front	Q90NE/800	\$3,430.00
400mm wide neutral top with full length drawer	Q90NEC/410	\$2,960.00
600mm wide neutral top with full length drawer	Q90NEC/610	\$3,500.00
800mm wide neutral top with full length drawer	Q90NEC/810	\$4,080.00



STAINLESS STEEL FLOOR STAND 620H

400mm wide stainless steel floor stand with shelf	90CAV4	\$1,560.00
600mm wide stainless steel floor stand with shelf	90CAV6	\$1,970.00
800mm wide stainless steel floor stand with shelf	90CAV8	\$2,150.00
1200mm wide stainless steel floor stand with shelf	90CAV12	\$2,130.00



STAINLESS STEEL OPEN CABINET 620H

200mm wide stainless steel open cabinet	90VA200	\$1,470.00
400mm wide stainless steel open cabinet	90VA400	\$1,660.00
600mm wide stainless steel open cabinet	90VA600	\$1,930.00
800mm wide stainless steel open cabinet	90VA800	\$2,350.00
1200mm wide stainless steel open cabinet	90VA120	\$2,910.00
1600mm wide stainless steel open cabinet	90VA160	\$3,910.00



ACCESSORIES FOR OPEN CABINETS

200mm wide stainless steel door with fittings	QP14	\$670.00
300mm wide stainless steel door with fittings	QP13	\$650.00
400mm wide stainless steel door with fittings	QP12	\$690.00



400mm wide stainless steel drawer kit 1/1GN	QKC11	\$1,640.00
800mm wide stainless steel drawer kit 2/1GN	QKC21	\$2,220.00



200mm wide stainless steel bottle holder	Q90VB	\$1045.00
--	-------	-----------

Set of runners 1/1GN	QRG11	\$620.00
Set of runners 2/1GN	QRG21	\$650.00

30°C to 90°C cabinet warmer	9KR	\$1,310.00
-----------------------------	-----	------------

Central upright for neutral cabinet	QMC	\$220.00
-------------------------------------	-----	----------

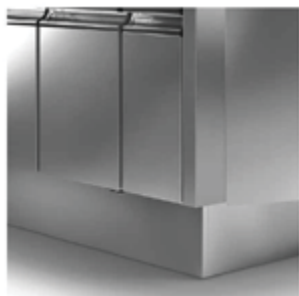
900 ACCESSORIES

SPLASHBACKS, REFRIGERATED BASES & PLINTH KICK PLATES



REAR SPLASH-BACK (FALSE CHIMNEY) 150H

200mm wide rear splashback	FC2	\$265.00
400mm wide rear splashback	FC4	\$310.00
600mm wide rear splashback	FC6	\$340.00
800mm wide rear splashback	FC8	\$350.00
1000mm wide rear splashback	FC10	\$520.00
1200mm wide rear splashback	FC12	\$620.00
1600mm wide rear splashback	FC16	\$620.00



PLINTH KICK PLATES

400mm wide stainless steel front kick plate	ZA40	\$350.00
600mm wide stainless steel front kick plate	ZA60	\$400.00
800mm wide stainless steel front kick plate	ZA80	\$400.00
1200mm wide stainless steel front kick plate	ZA120	\$420.00
1600mm wide stainless steel front kick plate	ZA160	\$440.00
900mm wide stainless steel side kick plate	ZL90	\$365.00



CASTORS

Set of four (4) castors, two with brakes	R	\$580.00
--	---	----------

NOTES

Accessories sold separately from equipment are subject to standard spare parts discount only.

Scots Ice Australia Baron Queen9 Price List | Issue Date: 01/10/2025 | Supersedes all previous versions

900 ACCESSORIES

SHELVING, BASKETS & MISCELLANEOUS



CHROMED WIRE OVEN SHELVES

Chrome wired oven shelf for standard oven	9GF	\$200.00
Chrome wired oven shelf for large oven	9GFL	\$365.00



ACCESSORIES FOR GAS RANGES

Removable hotplate cover	N9BA	\$450.00
Smooth cast iron plate for single burner	9PRL	\$560.00
Ribbed cast iron plate for single burner	9PRR	\$680.00



ACCESSORIES FOR GRIDDLES

400mm wide removable splashback	Q9PS40	\$450.00
600mm wide removable splashback	Q9PS60	\$550.00
800mm wide removable splashback	Q9PS80	\$495.00
1200mm wide removable splashback	90XFTP12	\$680.00



Smooth scraper	FT-R	\$320.00
Ribbed scraper	FT-LR	\$160.00



Cleaning drawer installation 400/1200	NXFTC4	\$420.00
Cleaning drawer installation 600/800	NXFTC6/8	\$450.00
Plug for cleaning	NXFTT	\$300.00



FRYER BASKETS

10L capacity basket for 610 fryers	CF10	\$220.00
15L capacity full size basket	CF15	\$230.00
15L capacity half size basket	CF15P	\$220.00
22/23L capacity full size basket	QCF22/23	\$350.00
22/23L capacity half size basket	QCF22/23P	\$265.00



PASTA COOKER BASKETS

1/6 pasta cooker basket. LHS handle (1 pcs)	CCP16S	\$290.00
1/6 pasta cooker basket. RHS handle (1 pcs)	CCP16D	\$290.00
1/3 pasta cooker basket. Two handles (1 pcs)	CCP13L	\$385.00
1/3 pasta cooker basket. One handle (1 pcs)	CCP13F	\$385.00
1/2 pasta cooker basket. Two handles (1 pcs)	CCP12	\$475.00



DIRECTABLE WATER FLUE

Directable water flue	QCH20	\$1,500.00
-----------------------	-------	------------

WORKING WITH AUSTRALIA'S FINEST DEALERSHIPS AND
DESIGNERS AND OFFERING THE BEST EQUIPMENT TO SUIT
YOUR NEEDS, WE ARE AUSTRALIA'S CHOICE FOR INNOVATIVE
FOOD SERVICE EQUIPMENT SOLUTIONS

CUSTOMER SERVICE

Free Call: 1800 222 460 (*Nation wide*)

Phone: (02) 9684 5666

Email: service@scotsice.com.au

Email: info@scotsice.com.au

SCOTS ICE AUSTRALIA
foodservice equipment

ABN: 54 080 084 260

448-452 Victoria Street

Wetherill Park, NSW 2164 Australia

www.scotsice.com.au

an Australian Ali Group Partner



The Spirit of Excellence