



**SCOTS ICE AUSTRALIA**  
foodservice equipment

## PRICE LIST 2025

**700 SERIES COMMERCIAL COOKING EQUIPMENT,  
SALAMANDERS & REFRIGERATED CHEF BASES**

---

VALID AS OF 1ST OCTOBER 2025

# BARON

## PROFESSIONAL **FOODSERVICE EQUIPMENT**

---

Manufactured in Italy, Baron Professional Cooking Equipment is built to a high level standard and is currently one of the leading European manufacturers in this field with a reputation for high quality and reliability.

Established in 1995 with the goal of designing a brand to satisfy and exceed the toughest requirements of professional catering.

With its vast range of integrated systems and equipment for professional kitchens, Baron quickly made its mark due to its perfect combination of high efficiency and sophisticated design.

All Baron equipment is built with modern technology combined with strength of stainless steel with Scotch Brite finish resulting in equipment that is sturdy, durable, hygienic and easy to clean.

Baron is the ideal partner for professional catering specialists thanks to its diversified and vast range of equipment, from its innovative heavy duty cooking ranges, available in both 700 mm and 900 mm depths, through to their range of salamander grills, convection and combination ovens.



**With the publication of this pricelist all previous versions are considered void.**

All prices shown are excluding GST. Specification, design and prices are subject to change without prior notice. For further information see our general terms and conditions at [www.scotsice.com.au](http://www.scotsice.com.au)

# CONTENTS

---

## GAS RANGES

Bench model gas cook tops	4
Gas cook tops with oven	6

## ELECTRIC RANGES

Electric cook tops	8
Electric cook tops with oven	9
Electric ceramic glass cook tops & ranges	10
Electric induction cook tops & woks	11

## GAS TARGET TOPS

Gas target tops & ranges	12
--------------------------	----

## ELECTRIC TARGET TOPS

Electric target tops & ranges	13
-------------------------------	----

## GAS GRIDDLE PLATES

Mild steel gas griddle plates	14
Chrome gas griddle plates	16

## ELECTRIC GRIDDLE PLATES

Mild steel electric griddle plates	18
Chrome electric griddle plates	20

## PASTA COOKERS

Gas pasta cookers	22
Electric pasta cookers	23

## DEEP FRYERS

Gas standard deep fryers	24
Electric standard deep fryers	25

## CHARGRILLS & BBQS

Gas lava rock bbqs	26
Electric bbqs	27

## BRATT PANS

TALENT multi function bratt pan	28
Electric bratt pans	29

## Ovens

Gas & electric static ovens	30
-----------------------------	----

## REFRIGERATED CHEF BASES

Refrigerated bases with drawers	31
---------------------------------	----

## SALAMANDERS

Electric salamanders	32
Electric rapid & gas salamanders	33

## ACCESSORIES

Neutral elements, cabinets & stands	34
Splashbacks, kick plates & castors	35
Shelving, baskets & miscellaneous	36



# 700 GAS RANGES

## BENCH MODEL GAS COOK TOPS AVAILABLE ON STAND OR CABINET (P.34), OR REFRIGERATED CHEF BASE (P.31)



**MODEL NUMBER**

Manufacturers Code

**Q70PC/G4005**

CR1012209

**Q70PC/G8005**

CR1012229

**LIST PRICE (EXC. GST)**

**\$4,100.00**

**\$5,770.00**

**BURNERS**

Number of burners

2

4

**DIMENSIONS**

Width

400 mm

800 mm

Depth

700 mm

700 mm

Height

250 mm

250 mm

**FEATURES**

Flame failure device

✓

✓

High power cast iron burners

✓

✓

Fully protected pilot light

✓

✓

IPX5 rated knobs

✓

✓

AISI304 s/steel construction

✓

✓

**POWER**

Gas connection

3/4"

3/4"

Gas power

44 Mj

88 Mj

Electric connection

-

-

Electric power

-

-

**ACCESSORIES**

Stainless steel floor stand

70CAV4

**\$1,770.00**

70CAV8

**\$2,380.00**

Stainless steel open cabinet

70VA400

**\$1,390.00**

70VA800

**\$1,890.00**

400mm cabinet door

QP12

**\$690.00**

QP12

**\$690.00**

Stainless steel double burner grid

CR1353949

**\$330.00**

CR1353949

**\$330.00**

Splashback (150H)

FC4

**\$310.00**

FC8

**\$350.00**

Electric ignition to burners\*

ACC2F

**\$485.00**

ACC4F

**\$540.00**

**WARRANTY**

Parts (months) exclusions apply

24

24

Labour (months) exclusions apply

24

24

**NOTES**

\*Electric ignition must be ordered at the same time as equipment - cannot be retrofit.  
Water bath system available with electric ignition and drain kit - contact us for specifications and pricing.  
For more accessories - see pages 34 - 36.  
**Accessories sold separately from equipment are subject to standard spare parts discount only.**

## 700 GAS RANGES

### BENCH MODEL GAS COOK TOPS AVAILABLE ON STAND OR CABINET (P.34), OR REFRIGERATED CHEF BASE (P.31)



**Q70PC/G1205**

CR1012249

**Q70PC/G1605**

CR1012269

**\$7,930.00**

**\$9,820.00**

6

8

1200 mm  
700 mm  
250 mm

1600 mm  
700 mm  
250 mm

✓

✓

✓

✓

✓

✓

✓

✓

✓

✓

3/4"  
132 Mj

3/4"  
132 Mj

-

-

-

-

70CAV12	<b>\$2,260.00</b>
70VA120	<b>\$2,350.00</b>
QP12	<b>\$690.00</b>
CR1353949	<b>\$330.00</b>
FC12	<b>\$620.00</b>
ACC6F	<b>\$695.00</b>

-	
70VA160	<b>\$3,370.00</b>
QP12	<b>\$690.00</b>
CR1353949	<b>\$330.00</b>
FC16	<b>\$620.00</b>
-	

24  
24

24  
24

#### NOTES

\*Electric ignition must be ordered at the same time as equipment - cannot be retrofit.  
Water bath system available with electric ignition and drain kit - contact us for specifications and pricing.  
For more accessories - see pages 34 - 36.

**Accessories sold separately from equipment are subject to standard spare parts discount only.**

Scots Ice Australia Baron Queen7 Price List | Issue Date: 01/10/2025 | Supersedes all previous versions

# 700 GAS RANGES

## GAS COOK TOPS WITH OVEN

for  
culinary  
colleges &  
VET schools

with electric ignition &  
fan forced electric oven



### MODEL NUMBER

Manufacturers Code

**Q70PCF/G8005**

CR1012449

**Q70PCF/GE8005**

CR1012459

**Q70PCF/GE8025**

-

### LIST PRICE (EXC. GST)

**\$9,880.00**

**\$11,380.00**

**\$11,550.00**

### BURNERS

Number of burners

4

4

4

### OVEN

Oven type

gas

electric (static)

**electric (fan forced)**

Oven internal size

572 x 580 x 300 mm

572 x 580 x 300 mm

570 x 530 x 295 mm

### DIMENSIONS

Width

800 mm

800 mm

800 mm

Depth

700 mm

700 mm

700 mm

Height

900 mm

900 mm

900 mm

### FEATURES

Flame failure device

✓

✓

✓

High power cast iron burners

✓

✓

✓

Fully protected pilot light

✓

✓

✓

IPX5 rated knobs

✓

✓

✓

AISI304 s/steel construction

✓

✓

✓

### POWER

Gas connection

3/4"

3/4"

3/4"

Gas power

113 Mj

88 Mj

88 Mj

Electric connection

-

400V/3N 50-60 Hz

415V/3N 50-60 Hz

Electric power

-

6 kW

4.2 kW

### ACCESSORIES

Stainless steel double burner grid

CR1353949

**\$330.00**

CR1353949

**\$330.00**

CR1353949

**\$330.00**

Splashback (150H)

FC8

**\$350.00**

FC8

**\$350.00**

FC8

**\$350.00**

Electric ignition to burners\*

ACC4F

**\$540.00**

ACC4F

**\$540.00**

**INCLUDED**

### WARRANTY

Parts (months) exclusions apply

24

24

24

Labour (months) exclusions apply

24

24

24

### 6 NOTES

\*Electric ignition must be ordered at the same time as equipment - cannot be retrofit.

Water bath system available with electric ignition and drain kit - contact us for specifications and pricing.

For more accessories - see pages 34 - 36.

**Accessories sold separately from equipment are subject to standard spare parts discount only.**

Scots Ice Australia Baron Queen7 Price List | Issue Date: 01/10/2025 | Supersedes all previous versions

# 700 GAS RANGES

## GAS COOK TOPS WITH OVEN



**Q70PCF/G1205**  
CR1012489

**\$13,660.00**

6

gas  
572 x 580 x 300 mm

1200 mm  
700 mm  
900 mm

✓  
✓  
✓  
✓  
✓

3/4"  
157 Mj  
-  
-

CR1353949	<b>\$330.00</b>
FC12	<b>\$620.00</b>
ACC6F	<b>\$695.00</b>

24  
24



**Q70PCFL/G1205**  
CR1012529

**\$13,640.00**

6

gas  
790 x 550 x 400 mm

1200 mm  
700 mm  
900 mm

✓  
✓  
✓  
✓  
✓

3/4"  
162 Mj  
-  
-

CR1353949	<b>\$330.00</b>
FC12	<b>\$620.00</b>
ACC6F	<b>\$695.00</b>

24  
24



**Q70PCF/G1605**  
CR1012549

**\$19,580.00**

8

gas  
572 x 580 x 300 mm (x2)

1600 mm  
700 mm  
900 mm

✓  
✓  
✓  
✓  
✓

3/4"  
220 Mj  
-  
-

CR1353949	<b>\$330.00</b>
FC16	<b>\$620.00</b>
-	

24  
24

### NOTES

\*Electric ignition must be ordered at the same time as equipment - cannot be retrofit.  
Water bath system available with electric ignition and drain kit - contact us for specifications and pricing.  
For more accessories - see pages 34 - 36.  
**Accessories sold separately from equipment are subject to standard spare parts discount only.**

Scots Ice Australia Baron Queen7 Price List | Issue Date: 01/10/2025 | Supersedes all previous versions



# 700 ELECTRIC RANGES

## BENCH MODEL ELECTRIC COOK TOPS AVAILABLE ON STAND OR CABINET (P.34), OR REFRIGERATED CHEF BASE (P.31)



MODEL NUMBER	Q70PC/E400		Q70PC/E800		Q70PC/E120	
Manufacturers Code	CR1012589		CR1012599		CR1012609	
LIST PRICE (EXC. GST)	\$3,120.00		\$4,580.00		\$6,270.00	
BURNERS						
Number of burners	2		4		6	
Shape of burners	round		round		round	
Diameter of burners	220 mm		220 mm		220 mm	
DIMENSIONS						
Width	400 mm		800 mm		1200 mm	
Depth	700 mm		700 mm		700 mm	
Height	250 mm		250 mm		250 mm	
FEATURES						
Water tight cast iron elements	✓		✓		✓	
Automatic safety thermostat	✓		✓		✓	
IPX5 rated knobs	✓		✓		✓	
AISI304 s/steel construction	✓		✓		✓	
POWER						
Gas connection	-		-		-	
Gas power	-		-		-	
Electric connection	400V/3N 50-60 Hz		400V/3N 50-60 Hz		400V/3N 50-60 Hz	
Electric power	5.2 kW		10.4 kW		15.6 kW	
ACCESSORIES						
Stainless steel floor stand	70CAV4	\$1,770.00	70CAV8	\$2,380.00	70CAV12	\$2,260.00
Stainless steel open cabinet	70VA400	\$1,390.00	70VA800	\$1,890.00	70VA120	\$2,350.00
400mm cabinet door	QP12	\$690.00	QP12	\$690.00	QP12	\$690.00
Splashback (150H)	FC4	\$310.00	FC8	\$350.00	FC12	\$620.00
WARRANTY						
Parts (months) exclusions apply	24		24		24	
Labour (months) exclusions apply	24		24		24	

### 8 NOTES

For more accessories - see pages 34 - 36.

**Accessories sold separately from equipment are subject to standard spare parts discount only.**

Scots Ice Australia Baron Queen7 Price List | Issue Date: 01/10/2025 | Supersedes all previous versions



# 700 ELECTRIC RANGES

## ELECTRIC COOK TOPS WITH OVEN



### MODEL NUMBER

Manufacturers Code

**Q70PCF/E800**

CR1012679

**Q70PCF/E120**

CR1012689

### LIST PRICE (EXC. GST)

**\$9,820.00**

**\$12,950.00**

### BURNERS

Number of burners

4

6

Shape of burners

round

round

Diameter of burners

220 mm

220 mm

### OVEN

Oven type

electric

electric

Oven internal size

572 x 580 x 300 mm

572 x 580 x 300 mm

### DIMENSIONS

Width

800 mm

1200 mm

Depth

700 mm

700 mm

Height

900 mm

900 mm

### FEATURES

Water tight cast iron elements

✓

✓

Automatic safety thermostat

✓

✓

IPX5 rated knobs

✓

✓

AISI304 s/steel construction

✓

✓

### POWER

Gas connection

-

-

Gas power

-

-

Electric connection

400V/3N 50-60 Hz

400V/3N 50-60 Hz

Electric power

15.7 kW

20.9 kW

### ACCESSORIES

Splashback (150H)

FC8

**\$350.00**

FC12

**\$620.00**

### WARRANTY

Parts (months) exclusions apply

24

24

Labour (months) exclusions apply

24

24

### NOTES

For more accessories - see pages 34 - 36.

**Accessories sold separately from equipment are subject to standard spare parts discount only.**

Scots Ice Australia Baron Queen7 Price List | Issue Date: 01/10/2025 | Supersedes all previous versions

# 700 ELECTRIC RANGES

## ELECTRIC RANGES WITH CERAMIC GLASS



MODEL NUMBER	Q70PC/VCE400		Q70PC/VCE800		Q70PCF/VCE800	
Manufacturers Code	CR1012959		CR1012989		CR1012949	
LIST PRICE (EXC. GST)	\$4,940.00		\$7,560.00		\$13,860.00	
BURNERS						
Number of burners	2		4		4	
Diameter of burners	230 mm		230 mm		230 mm	
OVEN						
Oven type	-		-		electric	
Oven internal size	-		-		572 x 580 x 300 mm	
DIMENSIONS						
Width	400 mm		800 mm		800 mm	
Depth	700 mm		700 mm		700 mm	
Height	250 mm		250 mm		900 mm	
FEATURES						
Watertight shatterproof glass	✓		✓		✓	
IPX5 rated knobs	✓		✓		✓	
AISI304 s/steel construction	✓		✓		✓	
POWER						
Gas connection	-		-		-	
Gas power	-		-		-	
Electric connection	400V/3N 50-60 Hz		400V/3N 50-60 Hz		400V/3N 50-60 Hz	
Electric power	5 kW		10 kW		16 kW	
ACCESSORIES						
Stainless steel floor stand	70CAV4	\$1,770.00	70CAV8	\$2,380.00	-	
Stainless steel open cabinet	70VA400	\$1,390.00	70VA800	\$1,890.00	-	
400mm cabinet door	QP12	\$690.00	QP12	\$690.00	-	
Splashback (150H)	FC4	\$310.00	FC8	\$350.00	FC8	\$350.00
WARRANTY						
Parts (months) exclusions apply	24		24		24	
Labour (months) exclusions apply	24		24		24	

# 700 ELECTRIC RANGES

## BENCH MODEL ELECTRIC INDUCTION COOK TOPS



MODEL NUMBER	Q70PC/IND401		Q70PC/IND801		Q70PC/WOK401	
Manufacturers Code	CR1358319		CR1358339		CR1359259	
LIST PRICE (EXC. GST)	\$16,330.00		\$25,800.00		\$10,870.00	
BURNERS						
Number of burners	2		4		1	
Diameter of burners	230 mm		230 mm		300 mm	
DIMENSIONS						
Width	400 mm		800 mm		400 mm	
Depth	700 mm		700 mm		700 mm	
Height	250 mm		250 mm		250 mm	
FEATURES						
Watertight shatterproof glass	✓		✓		✓	
Overheating safety sensor	✓		✓		✓	
Heat mode indicator light	✓		✓		✓	
IPX5 rated knobs	✓		✓		✓	
AISI304 s/steel construction	✓		✓		✓	
POWER						
Gas connection	-		-		-	
Gas power	-		-		-	
Electric connection	400V/3N 50-60 Hz		400V/3N 50-60 Hz		400V/3N 50-60 Hz	
Electric power	10 kW		20 kW		5 kW	
ACCESSORIES						
Stainless steel floor stand	70CAV4	\$1,770.00	70CAV8	\$2,380.00	70CAV4	\$1,770.00
Stainless steel open cabinet	70VA400	\$1,390.00	70VA800	\$1,890.00	70VA400	\$1,390.00
400mm cabinet door	QP12	\$690.00	QP12	\$690.00	QP12	\$690.00
Splashback (150H)	FC4	\$310.00	FC8	\$350.00	FC4	\$310.00
WARRANTY						
Parts (months) exclusions apply	24		24		24	
Labour (months) exclusions apply	24		24		24	

### NOTES

For more accessories - see pages 34 - 36.

**Accessories sold separately from equipment are subject to standard spare parts discount only.**

Scots Ice Australia Baron Queen7 Price List | Issue Date: 01/10/2025 | Supersedes all previous versions

# 700 GAS TARGET TOPS

## GAS TARGET TOP RANGE



MODEL NUMBER	Q70TP/G800		Q70TPF/G800		Q70TPF/GE800	
Manufacturers Code	CR1013019		CR1013229		CR1013239	
LIST PRICE (EXC. GST)	\$6,490.00		\$10,780.00		\$11,130.00	
HEAT ZONE						
Solid top size	full module		full module		full module	
OVEN						
Oven type	-		gas		electric	
Oven internal size	-		572 x 580 x 300 mm		572 x 580 x 300 mm	
DIMENSIONS						
Width	800 mm		800 mm		800 mm	
Depth	700 mm		700 mm		700 mm	
Height	250 mm		900 mm		900 mm	
FEATURES						
High powered central burner	✓		✓		✓	
Safety valve with thermocouple	✓		✓		✓	
IPX5 rated knobs	✓		✓		✓	
AISI304 s/steel construction	✓		✓		✓	
POWER						
Gas connection	3/4"		3/4"		3/4"	
Gas power	43 Mj		67 Mj		43 Mj	
Electric connection	-		-		400V/3N 50-60 Hz	
Electric power	-		-		6 kW	
ACCESSORIES						
Stainless steel floor stand	70CAV8	\$2,380.00	-		-	
Stainless steel open cabinet	70VA800	\$1,890.00	-		-	
400mm cabinet door	QP12	\$690.00	-		-	
Splashback (150H)	FC8	\$350.00	FC8	\$350.00	FC8	\$350.00
WARRANTY						
Parts (months) exclusions apply	24		24		24	
Labour (months) exclusions apply	24		24		24	

# 700 ELECTRIC TARGET TOPS

## ELECTRIC TARGET TOP RANGE



MODEL NUMBER	Q70TP/E800		Q70TPF/EE800	
Manufacturers Code	CR1013029		CR1013249	
LIST PRICE (EXC. GST)	\$10,060.00		\$16,210.00	
BURNERS				
Number of heat zones	4		4	
OVEN				
Oven type	-		electric	
Oven internal size	-		572 x 580 x 300 mm	
DIMENSIONS				
Width	800 mm		800 mm	
Depth	700 mm		700 mm	
Height	250 mm		900 mm	
FEATURES				
Polished chrome cooking plate 1.8mm	✓		✓	
Thermostat controls	✓		✓	
IPX5 rated knobs	✓		✓	
AISI304 s/steel construction	✓		✓	
POWER				
Gas connection	-		-	
Gas power	-		-	
Electric connection	400V/3N 50-60 Hz		400V/3N 50-60 Hz	
Electric power	10 kW		16 kW	
ACCESSORIES				
Stainless steel floor stand	70CAV8	\$2,380.00	-	
Stainless steel open cabinet	70VA800	\$1,890.00	-	
400mm cabinet door	QP12	\$690.00	-	
Splashback (150H)	FC8	\$350.00	FC8	\$350.00
WARRANTY				
Parts (months) exclusions apply	24		24	
Labour (months) exclusions apply	24		24	

### NOTES

For more accessories - see pages 34 - 36.

**Accessories sold separately from equipment are subject to standard spare parts discount only.**

Scots Ice Australia Baron Queen7 Price List | Issue Date: 01/10/2025 | Supersedes all previous versions

# 700 GAS MILD STEEL GRIDDLE PLATES

## MILD STEEL GAS GRIDDLE PLATES AVAILABLE ON STAND OR CABINET (P.34), OVEN (P.30) OR REFRIGERATED CHEF BASE (P.31)



MODEL NUMBER	Q70SFT/G400		Q70SFT/G800	
Manufacturers Code	CR1652609		CR1652709	
LIST PRICE (EXC. GST)	\$5,500.00		\$7,580.00	
COOKING SURFACE	mild steel		mild steel	
Plate type	smooth		smooth	
DIMENSIONS				
Width	400 mm		800 mm	
Depth	700 mm		700 mm	
Height	250 mm		250 mm	
FEATURES				
Piezo-electric ignition	✓		✓	
Flame failure device for burners	✓		✓	
Thermostat control	✗		✗	
IPX5 rated knobs	✓		✓	
AISI304 s/steel construction	✓		✓	
POWER				
Gas connection	3/4"		3/4"	
Gas power	21.6 Mj		43.2 Mj	
Electric connection	-		-	
Electric power	-		-	
ACCESSORIES				
Stainless steel floor stand	70CAV4	\$1,770.00	70CAV8	\$2,380.00
Stainless steel open cabinet	70VA400	\$1,390.00	70VA800	\$1,890.00
400mm cabinet door	QP12	\$690.00	QP12	\$690.00
300mm cabinet door	-		-	
Splashback (150H)	FC4	\$310.00	FC8	\$350.00
Cleaning drawer	NXFTC4	\$420.00	NXFTC6/8	\$450.00
Plug for cleaning	NXFTT	\$300.00	NXFTT	\$300.00
WARRANTY				
Parts (months) exclusions apply	24		24	
Labour (months) exclusions apply	24		24	

### NOTES

Above models come complete with rear splashguard and scraper.

Fully ribbed plate versions available on request - contact us for specifications and pricing.

For more accessories - see pages 34 - 36.

**Accessories sold separately from equipment are subject to standard spare parts discount only.**

# 700 GAS MILD STEEL GRIDDLE PLATES

## MILD STEEL GAS GRIDDLE PLATES AVAILABLE ON ON STAND OR CABINET (P.34), OVEN (P.30) OR REFRIGERATED CHEF BASE (P.31)



**Q70SFT/G820**  
CR1652749

**\$7,740.00**

**mild steel**

2/3 smooth - 1/3 ribbed

800 mm  
700 mm  
250 mm

✓  
✓  
x  
✓  
✓

3/4"  
43.2 Mj  
-  
-

70CAV8	<b>\$2,380.00</b>
70VA800	<b>\$1,890.00</b>
QP12	<b>\$690.00</b>
-	-
FC8	<b>\$350.00</b>
NXFTC6/8	<b>\$450.00</b>
NXFTT	<b>\$300.00</b>

24  
24



**Q70FTT/G1200**  
CR1013489

**\$11,710.00**

**mild steel**

smooth

1200 mm  
700 mm  
250 mm

✓  
✓  
✓  
✓  
✓

3/4"  
54 Mj  
-  
-

70CAV12	<b>\$2,260.00</b>
70VA120	<b>\$2,350.00</b>
QP12	<b>\$690.00</b>
-	-
FC12	<b>\$620.00</b>
NXFTC6/8	<b>\$450.00</b>
NXFTT	<b>\$300.00</b>

24  
24



**Q70FTT/G1220**  
CR1013509

**\$11,890.00**

**mild steel**

2/3 smooth - 1/3 ribbed

1200 mm  
700 mm  
250 mm

✓  
✓  
✓  
✓  
✓

3/4"  
54 Mj  
-  
-

70CAV12	<b>\$2,260.00</b>
70VA120	<b>\$2,350.00</b>
QP12	<b>\$690.00</b>
-	-
FC12	<b>\$620.00</b>
NXFTC6/8	<b>\$450.00</b>
NXFTT	<b>\$300.00</b>

24  
24

### NOTES

Above models come complete with rear splashguard and scraper.  
Fully ribbed plate versions available on request - contact us for specifications and pricing.  
For more accessories - see pages 34 - 36.

**Accessories sold separately from equipment are subject to standard spare parts discount only.**

Scots Ice Australia Baron Queen7 Price List | Issue Date: 01/10/2025 | Supersedes all previous versions



# 700 GAS CHROME GRIDDLE PLATES

## CHROME GAS GRIDDLE PLATES AVAILABLE ON STAND OR CABINET (P.34), OVEN (P.30) OR REFRIGERATED CHEF BASE (P.31)



MODEL NUMBER	Q70SFTT/G405		Q70SFTT/G805	
Manufacturers Code	CR1652929		CR1652979	
LIST PRICE (EXC. GST)	6,400.00		\$9,260.00	
COOKING SURFACE	chrome		chrome	
Plate type	smooth		smooth	
DIMENSIONS				
Width	400 mm		800 mm	
Depth	700 mm		700 mm	
Height	250 mm		250 mm	
FEATURES				
Piezo-electric ignition	✓		✓	
Flame failure device for burners	✓		✓	
Thermostat control	✓		✓	
IPX5 rated knobs	✓		✓	
AISI304 s/steel construction	✓		✓	
POWER				
Gas connection	3/4"		3/4"	
Gas power	21.6 Mj		43.2 Mj	
Electric connection	-		-	
Electric power	-		-	
ACCESSORIES				
Stainless steel floor stand	70CAV4	\$1,770.00	70CAV8	\$2,380.00
Stainless steel open cabinet	70VA400	\$1,390.00	70VA800	\$1,890.00
400mm cabinet door	QP12	\$690.00	QP12	\$690.00
300mm cabinet door	-		-	
Splashback (150H)	FC4	\$310.00	FC8	\$350.00
Cleaning drawer	NXFTC4	\$420.00	NXFTC6/8	\$450.00
Plug for cleaning	NXFTT	\$300.00	NXFTT	\$300.00
WARRANTY				
Parts (months) exclusions apply	24		24	
Labour (months) exclusions apply	24		24	

### NOTES

Above models come complete with rear splashguard and scraper.

Fully ribbed plate versions available on request - contact us for specifications and pricing.

For more accessories - see pages 34 - 36.

**Accessories sold separately from equipment are subject to standard spare parts discount only.**

# 700 GAS CHROME GRIDDLE PLATES

## CHROME GAS GRIDDLE PLATES AVAILABLE ON STAND OR CABINET (P.34), OVEN (P.30) OR REFRIGERATED CHEF BASE (P.31)



<b>Q70SFTT/G825</b>		<b>Q70FTT/G1205</b>		<b>Q70FTT/G1225</b>	
CR1652999		CR1013499		CR1013519	
<b>\$9,470.00</b>		<b>\$12,410.00</b>		<b>\$12,640.00</b>	
<b>chrome</b>		<b>chrome</b>		<b>chrome</b>	
2/3 smooth - 1/3 ribbed		smooth		2/3 smooth - 1/3 ribbed	
800 mm 700 mm 250 mm		1200 mm 700 mm 250 mm		1200 mm 700 mm 250 mm	
✓ ✓ ✓ ✓ ✓		✓ ✓ ✓ ✓ ✓		✓ ✓ ✓ ✓ ✓	
3/4" 43.2 Mj - -		3/4" 54 Mj - -		3/4" 54 Mj - -	
70CAV8	<b>\$2,380.00</b>	70CAV12	<b>\$2,260.00</b>	70CAV12	<b>\$2,260.00</b>
70VA800	<b>\$1,890.00</b>	70VA120	<b>\$2,350.00</b>	70VA120	<b>\$2,350.00</b>
QP12	<b>\$690.00</b>	QP12	<b>\$690.00</b>	QP12	<b>\$690.00</b>
-		-		-	
FC8	<b>\$350.00</b>	FC12	<b>\$620.00</b>	FC12	<b>\$620.00</b>
NXFTC6/8	<b>\$450.00</b>	NXFTC6/8	<b>\$450.00</b>	NXFTC6/8	<b>\$450.00</b>
NXFTT	<b>\$300.00</b>	NXFTT	<b>\$300.00</b>	NXFTT	<b>\$300.00</b>
24 24		24 24		24 24	

### NOTES

Above models come complete with rear splashguard and scraper.

Fully ribbed plate versions available on request - contact us for specifications and pricing.

For more accessories - see pages 34 - 36.

**Accessories sold separately from equipment are subject to standard spare parts discount only.**

Scots Ice Australia Baron Queen7 Price List | Issue Date: 01/10/2025 | Supersedes all previous versions

# 700 ELECTRIC MILD STEEL GRIDDLE PLATES

## MILD STEEL ELECTRIC GRIDDLE PLATES AVAILABLE ON STAND OR CABINET (P.34), OVEN (P.30) OR REFRIGERATED CHEF BASE (P.31)



MODEL NUMBER	Q70SFT/E400		Q70SFT/E600		Q70SFT/E620	
Manufacturers Code	CR1653409		CR1653429		CR1653449	
LIST PRICE (EXC. GST)	\$5,400.00		\$6,270.00		\$6,370.00	
COOKING SURFACE	mild steel		mild steel		mild steel	
Plate type	smooth		smooth		2/3 smooth - 1/3 ribbed	
DIMENSIONS						
Width	400 mm		600 mm		600 mm	
Depth	700 mm		700 mm		700 mm	
Height	250 mm		250 mm		250 mm	
FEATURES						
High power heating elements	✓		✓		✓	
Thermostat control	✓		✓		✓	
IPX5 rated knobs	✓		✓		✓	
AISI304 s/steel construction	✓		✓		✓	
POWER						
Gas connection	-		-		-	
Gas power	-		-		-	
Electric connection	400V/3N 50-60 Hz		400V/3N 50-60 Hz		400V/3N 50-60 Hz	
Electric power	5.4 kW		7.5 kW		7.5 kW	
ACCESSORIES						
Stainless steel floor stand	70CAV4	\$1,770.00	70CAV6	\$2,090.00	70CAV6	\$2,090.00
Stainless steel open cabinet	70VA400	\$1,390.00	70VA600	\$1,590.00	70VA600	\$1,590.00
400mm cabinet door	QP12	\$690.00	-	-	-	-
300mm cabinet door	-	-	QP13	\$650.00	QP13	\$650.00
Splashback (150H)	FC4	\$310.00	FC6	\$340.00	FC6	\$340.00
Cleaning drawer	NXFTC4	\$420.00	NXFTC6/8	\$450.00	NXFTC6/8	\$450.00
Plug for cleaning	NXFTT	\$300.00	NXFTT	\$300.00	NXFTT	\$300.00
WARRANTY						
Parts (months) exclusions apply	24		24		24	
Labour (months) exclusions apply	24		24		24	

# 700 ELECTRIC MILD STEEL GRIDDLE PLATES

## MILD STEEL ELECTRIC GRIDDLE PLATES AVAILABLE ON STAND OR CABINET (P.34), OVEN (P.30) OR REFRIGERATED CHEF BASE (P.31)



Q70SFT/E800 CR1653459		Q70SFT/E820 CR1653479		Q70FT/E1200 CR1014109		Q70FT/E1220 CR1014129	
\$7,670.00		\$7,690.00		\$10,970.00		\$11,320.00	
mild steel smooth		mild steel 2/3 smooth - 1/3 ribbed		mild steel smooth		mild steel 2/3 smooth - 1/3 ribbed	
800 mm 700 mm 250 mm		800 mm 700 mm 250 mm		1200 mm 700 mm 250 mm		1200 mm 700 mm 250 mm	
✓ ✓ ✓ ✓		✓ ✓ ✓ ✓		✓ ✓ ✓ ✓		✓ ✓ ✓ ✓	
- - 400V/3N 50-60 Hz 10.8 kW		- - 400V/3N 50-60 Hz 10.8 kW		- - 400V/3N 50-60 Hz 16.2 kW		- - 400V/3N 50-60 Hz 16.2 kW	
70CAV8	\$2,380.00	70CAV8	\$2,380.00	70CAV12	\$2,260.00	70CAV12	\$2,260.00
70VA800	\$1,890.00	70VA800	\$1,890.00	70VA120	\$2,350.00	70VA120	\$2,230.00
QP12	\$690.00	QP12	\$690.00	QP12	\$690.00	QP12	\$690.00
-	-	-	-	-	-	-	-
FC8	\$350.00	FC8	\$350.00	FC12	\$620.00	FC12	\$620.00
NXFTC6/8	\$450.00	NXFTC6/8	\$450.00	NXFTC6/8	\$450.00	NXFTC6/8	\$450.00
NXFTT	\$300.00	NXFTT	\$300.00	NXFTT	\$300.00	NXFTT	\$300.00
24 24		24 24		24 24		24 24	

### NOTES

Above models come complete with rear splashguard and scraper.  
Fully ribbed plate versions available on request - contact us for specifications and pricing.  
For more accessories - see pages 34 - 36.

**Accessories sold separately from equipment are subject to standard spare parts discount only.**

Scots Ice Australia Baron Queen7 Price List | Issue Date: 01/10/2025 | Supersedes all previous versions

# 700 ELECTRIC CHROME GRIDDLE PLATES

## CHROME ELECTRIC GRIDDLE PLATES AVAILABLE ON STAND OR CABINET (P.34), OVEN (P.30) OR REFRIGERATED CHEF BASE (P.31)



MODEL NUMBER	Q70SFT/E405		Q70SFT/E605		Q70SFT/E625	
Manufacturers Code	CR1653569		CR1653589		CR1653609	
LIST PRICE (EXC. GST)	\$6,110.00		\$7,010.000		\$7,440.00	
COOKING SURFACE	chrome		chrome		chrome	
Plate type	smooth		smooth		2/3 smooth - 1/3 ribbed	
DIMENSIONS						
Width	400 mm		600 mm		600 mm	
Depth	700 mm		700 mm		700 mm	
Height	250 mm		250 mm		250 mm	
FEATURES						
High power heating elements	✓		✓		✓	
Thermostat control	✓		✓		✓	
IPX5 rated knobs	✓		✓		✓	
AISI304 s/steel construction	✓		✓		✓	
POWER						
Gas connection	-		-		-	
Gas power	-		-		-	
Electric connection	400V/3N 50-60 Hz		400V/3N 50-60 Hz		400V/3N 50-60 Hz	
Electric power	5.4 kW		7.5 kW		7.5 kW	
ACCESSORIES						
Stainless steel floor stand	70CAV4	\$1,770.00	70CAV6	\$2,090.00	70CAV6	\$2,090.00
Stainless steel open cabinet	70VA400	\$1,390.00	70VA600	\$1,590.00	70VA600	\$1,590.00
400mm cabinet door	QP12	\$690.00	-	-	-	-
300mm cabinet door	-	-	QP13	\$650.00	QP13	\$650.00
Splashback (150H)	FC4	\$310.00	FC6	\$340.00	FC6	\$340.00
Cleaning drawer	NXFTC4	\$420.00	NXFTC6/8	\$450.00	NXFTC6/8	\$450.00
Plug for cleaning	NXFTT	\$300.00	NXFTT	\$300.00	NXFTT	\$300.00
WARRANTY						
Parts (months) exclusions apply	24		24		24	
Labour (months) exclusions apply	24		24		24	

# 700 ELECTRIC CHROME GRIDDLE PLATES

## CHROME ELECTRIC GRIDDLE PLATES AVAILABLE ON STAND OR CABINET (P.34), OVEN (P.30) OR REFRIGERATED CHEF BASE (P.31)

			
<b>Q70SFT/E805</b> CR1653619	<b>Q70SFT/E825</b> CR1653639	<b>Q70FT/E1205</b> CR1014119	<b>Q70FT/E1225</b> CR1014139
<b>\$8,750.00</b>	<b>\$8,770.00</b>	<b>\$13,020.00</b>	<b>\$13,360.00</b>
<b>chrome</b> smooth	<b>chrome</b> 2/3 smooth - 1/3 ribbed	<b>chrome</b> smooth	<b>chrome</b> 2/3 smooth - 1/3 ribbed
800 mm 700 mm 250 mm	800 mm 700 mm 250 mm	1200 mm 700 mm 250 mm	1200 mm 700 mm 250 mm
✓ ✓ ✓ ✓	✓ ✓ ✓ ✓	✓ ✓ ✓ ✓	✓ ✓ ✓ ✓
- - 400V/3N 50-60 Hz 10.8 kW	- - 400V/3N 50-60 Hz 10.8 kW	- - 400V/3N 50-60 Hz 16.2 kW	- - 400V/3N 50-60 Hz 16.2 kW
70CAV8 <b>\$2,380.00</b> 70VA800 <b>\$1,890.00</b> QP12 <b>\$690.00</b> - FC8 <b>\$350.00</b> NXFTC6/8 <b>\$450.00</b> NXFTT <b>\$300.00</b>	70CAV8 <b>\$2,380.00</b> 70VA800 <b>\$1,890.00</b> QP12 <b>\$690.00</b> - FC8 <b>\$350.00</b> NXFTC6/8 <b>\$450.00</b> NXFTT <b>\$300.00</b>	70CAV12 <b>\$2,260.00</b> 70VA120 <b>\$2,350.00</b> QP12 <b>\$690.00</b> - FC12 <b>\$620.00</b> NXFTC6/8 <b>\$450.00</b> NXFTT <b>\$300.00</b>	70CAV12 <b>\$2,260.00</b> 70VA120 <b>\$2,350.00</b> QP12 <b>\$690.00</b> - FC12 <b>\$620.00</b> NXFTC6/8 <b>\$450.00</b> NXFTT <b>\$300.00</b>
24 24	24 24	24 24	24 24

### NOTES

Above models come complete with rear splashguard and scraper.  
Fully ribbed plate versions available on request - contact us for specifications and pricing.  
For more accessories - see pages 34 - 36.

**Accessories sold separately from equipment are subject to standard spare parts discount only.**

Scots Ice Australia Baron Queen7 Price List | Issue Date: 01/10/2025 | Supersedes all previous versions

# 700 PASTA COOKERS

## GAS PASTA COOKERS - BASKETS NOT INCLUDED



<b>MODEL NUMBER</b>	<b>Q70CP/G400</b>	<b>Q70CP/G800</b>
Manufacturers Code	CR1014759	CR1014779
<b>LIST PRICE (EXC. GST)</b>	<b>\$8,690.00</b>	<b>\$14,020.00</b>
<b>CAPACITY</b>	<b>26 L</b>	<b>26 L + 26 L</b>
Number of basins	1	2
<b>DIMENSIONS</b>		
Width	400 mm	800 mm
Depth	700 mm	700 mm
Height	900 mm	900 mm
<b>FEATURES</b>		
AISI 316 stainless steel tank	✓	✓
Thermostat control	✓	✓
IPX5 rated knobs	✓	✓
AISI304 s/steel construction	✓	✓
<b>POWER</b>		
Gas connection	3/4"	3/4"
Gas power	50 Mj	100 Mj
Electric connection	-	-
Electric power	-	-
<b>ACCESSORIES</b>		
1/6 basket kit (4 pcs)	7A <b>\$1,160.00</b>	7A <b>\$1,160.00</b>
1/3 basket kit (2 pcs)	7B <b>\$770.00</b>	7B <b>\$770.00</b>
1/3 basket kit (2 pcs)	7C <b>\$770.00</b>	7C <b>\$770.00</b>
Lid	CVCP26 <b>\$170.00</b>	CVCP26 <b>\$170.00</b>
Splashback (150H)	FC4 <b>\$310.00</b>	FC8 <b>\$350.00</b>
<b>WARRANTY</b>		
Parts (months) exclusions apply	24	24
Labour (months) exclusions apply	24	24

### NOTES

Above models come complete with water tap, spout and overflow with drain.

Please note that pasta baskets are not included as standard.

For more accessories - see pages 34 - 36.

**Accessories sold separately from equipment are subject to standard spare parts discount only.**



# 700 PASTA COOKERS

## ELECTRIC PASTA COOKERS - BASKETS NOT INCLUDED



**Q70CP/E400**

CR1014799

**Q70CP/E800**

CR1014819

**\$7,860.00**

**\$11,710.00**

**26 L**

1

**26 L + 26 L**

2

400 mm  
700 mm  
900 mm

800 mm  
700 mm  
900 mm



-  
-

400V/3N 50-60 Hz  
7.5 kW

-  
-

400V/3N 50-60 Hz  
15 kW

7A **\$1,160.00**  
7B **\$770.00**  
7C **\$770.00**  
CVCP26 **\$170.00**  
FC4 **\$310.00**

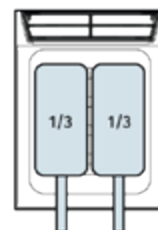
7A **\$1,160.00**  
7B **\$770.00**  
7C **\$770.00**  
CVCP26 **\$170.00**  
FC8 **\$350.00**

24  
24

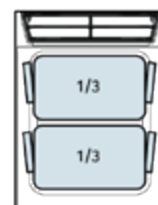
24  
24



**7A**  
**BASKET KIT**



**7B**  
**BASKET KIT**



**7C**  
**BASKET KIT**

### NOTES

Above models come complete with water tap, spout and overflow with drain.

Please note that pasta baskets are not included as standard.

For more accessories - see pages 34 - 36.

**Accessories sold separately from equipment are subject to standard spare parts discount only.**

Scots Ice Australia Baron Queen7 Price List | Issue Date: 01/10/2025 | Supersedes all previous versions

# 700 STANDARD FRYERS

## GAS STANDARD DEEP FRYERS



<b>MODEL NUMBER</b>	<b>Q70FRI/G415</b>	<b>Q70FRI/G610</b>	<b>Q70FRI/G815</b>
Manufacturers Code	CR1014839	CR1014849	CR1014859
<b>LIST PRICE (EXC. GST)</b>	<b>\$7,810.00</b>	<b>\$12,540.00</b>	<b>\$13,570.00</b>
<b>CAPACITY</b>	<b>15 L</b>	<b>10 L + 10 L</b>	<b>15 L + 15 L</b>
Number of basins	1	2	2
<b>DIMENSIONS</b>			
Width	400 mm	600 mm	800 mm
Depth	700 mm	700 mm	700 mm
Height	900 mm	900 mm	900 mm
<b>FEATURES</b>			
Large capacity cooking pots	✓	✓	✓
Automatic temp. adjustment	✓	✓	✓
Fire proof safety thermostat	✓	✓	✓
Oil drain valves	✓	✓	✓
Support for baskets	✓	✓	✓
IPX5 rated knobs	✓	✓	✓
AISI304 s/steel construction	✓	✓	✓
<b>POWER</b>			
Gas connection	3/4"	3/4"	3/4"
Gas power	50 Mj	72 Mj	100 Mj
Electric connection	-	-	-
Electric power	-	-	-
<b>INCLUSIONS</b>			
Baskets	2	2	4
<b>ACCESSORIES</b>			
Oil tray	7BRO <b>\$470.00</b>	7BRO <b>\$470.00</b>	7BRO <b>\$470.00</b>
Splashback (150H)	FC4 <b>\$310.00</b>	FC6 <b>\$340.00</b>	FC8 <b>\$350.00</b>
<b>WARRANTY</b>			
Parts (months) exclusions apply	24	24	24
Labour (months) exclusions apply	24	24	24

# 700 STANDARD FRYERS

## ELECTRIC STANDARD DEEP FRYERS



**Q70FRI/E415**

CR1014879

**Q70FRI/E610**

CR1014899

**Q70FRI/E815**

CR1014909

**\$7,560.00**

**\$11,310.00**

**\$12,670.00**

**15 L**

1

**10 L + 10 L**

2

**15 L + 15 L**

2

400 mm  
700 mm  
900 mm

600 mm  
700 mm  
900 mm

800 mm  
700 mm  
900 mm

✓  
✓  
✓  
✓  
✓  
✓  
✓  
✓

✓  
✓  
✓  
✓  
✓  
✓  
✓  
✓

✓  
✓  
✓  
✓  
✓  
✓  
✓  
✓

-  
-  
400V/3N 50-60 Hz  
13 kW

-  
-  
400V/3N 50-60 Hz  
18 kW

-  
-  
400V/3N 50-60 Hz  
26 kW

2

2

4

7BRO

**\$470.00**

-

7BRO

**\$470.00**

-

7BRO

**\$470.00**

-

24  
24

24  
24

24  
24

### NOTES

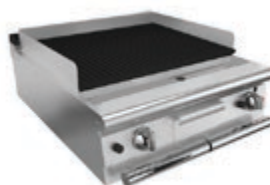
For more accessories - see pages 34 - 36.

**Accessories sold separately from equipment are subject to standard spare parts discount only.**

Scots Ice Australia Baron Queen7 Price List | Issue Date: 01/10/2025 | Supersedes all previous versions

# 700 CHARGRILLS & BBQS

## GAS LAVA ROCK BBQ AVAILABLE ON STAND OR CABINET (P.34), OR REFRIGERATED CHEF BASE (P.31)



MODEL NUMBER	Q70SGL/G403		Q70SGL/G803		Q70SGL/G123	
Manufacturers Code	CR1657049		CR1657089		CR1657129	
LIST PRICE (EXC. GST)	\$7,370.00		\$10,840.00		\$14,170.00	
BURNERS						
Number of burners	1		2		3	
DIMENSIONS						
Width	400 mm		800 mm		1200 mm	
Depth	700 mm		700 mm		700 mm	
Height	250 mm		250 mm		250 mm	
FEATURES						
High power s/steel burners	✓		✓		✓	
Cast iron grill	✓		✓		✓	
Lava rocks with radiant features	✓		✓		✓	
IPX5 rated knobs	✓		✓		✓	
AISI304 s/steel construction	✓		✓		✓	
POWER						
Gas connection	3/4"		3/4"		3/4"	
Gas power	36 Mj		72 Mj		108 Mj	
Electric connection	-		-		-	
Electric power	-		-		-	
ACCESSORIES						
Stainless steel floor stand	70CAV4	\$1,770.00	70CAV8	\$2,380.00	70CAV12	\$2,260.00
Stainless steel open cabinet	70VA400	\$1,390.00	70VA800	\$1,890.00	70VA120	\$2,350.00
400mm cabinet door	QP12	\$690.00	QP12	\$690.00	QP12	\$690.00
Splashback (150H)	FC4	\$310.00	FC8	\$350.00	FC12	\$620.00
Bag of volcanic rocks (4kg)	QCPL6	\$150.00	QCPL6	\$150.00	QCPL6	\$150.00
Smoker box (1pcs)	-		Q7AF	\$940.00	Q7AF	\$940.00
WARRANTY						
Parts (months) exclusions apply	24		24		24	
Labour (months) exclusions apply	24		24		24	

# 700 CHARGRILLS & BBQS

## ELECTRIC BBQ AVAILABLE ON STAND OR CABINET (P.34), OR REFRIGERATED CHEF BASE (P.31)



MODEL NUMBER	Q70SG/E403P		Q70SG/E803P		Q70SG/E123P	
Manufacturers Code	CR1772179		CR1772219		CR1772259	
LIST PRICE (EXC. GST)	\$7,300.00		\$10,730.00		\$14,420.00	
BURNERS						
Number of burners	1		2		3	
DIMENSIONS						
Width	400 mm		800 mm		1200 mm	
Depth	700 mm		700 mm		700 mm	
Height	250 mm		250 mm		250 mm	
FEATURES						
High power heating elements	✓		✓		✓	
Cast iron grill	✓		✓		✓	
IPX5 rated knobs	✓		✓		✓	
AISI304 s/steel construction	✓		✓		✓	
POWER						
Gas connection	-		-		-	
Gas power	-		-		-	
Electric connection	400V/3N 50-60 Hz		400V/3N 50-60 Hz		400V/3N 50-60 Hz	
Electric power	5.2 kW		10.4 kW		15.6 kW	
ACCESSORIES						
Stainless steel floor stand	70CAV4	\$1,770.00	70CAV8	\$2,380.00	70CAV12	\$2,260.00
Stainless steel open cabinet	70VA400	\$1,390.00	70VA800	\$1,890.00	70VA120	\$2,350.00
400mm cabinet door	QP12	\$690.00	QP12	\$690.00	QP12	\$690.00
Splashback (150H)	FC4	\$310.00	FC8	\$350.00	FC12	\$620.00
Smoker box (1pcs)	-		Q7AF	\$940.00	Q7AF	\$940.00
WARRANTY						
Parts (months) exclusions apply	24		24		24	
Labour (months) exclusions apply	24		24		24	

### NOTES

For more accessories - see pages 34 - 36.

Accessories sold separately from equipment are subject to standard spare parts discount only.

Scots Ice Australia Baron Queen7 Price List | Issue Date: 01/10/2025 | Supersedes all previous versions

# 700 BRATT PANS

## TALENT MULTI FUNCTION BRATT PAN



<b>MODEL NUMBER</b>	<b>Q70MT/E800</b>
Manufacturers Code	CR1659849
<b>LIST PRICE (EXC. GST)</b>	<b>\$32,330.00</b>
<b>CAPACITY</b>	
Tank capacity	17 L (1/1GN)
Cooking surface	580 x 305 mm
<b>DIMENSIONS</b>	
Width	800 mm
Depth	700 mm
Height	900 mm
<b>FEATURES</b>	
7 versatile cooking functions	✓
Touch screen control	✓
Automatic water fill	✓
USB ports (x2)	✓
IPX5 rated knobs	✓
AISI304 s/steel construction	✓
<b>INCLUSIONS</b>	
Lid	✓
Bottom grid	✓
Steamer baskets	✓
Pasta cooker baskets	✓
Slow cooker stand	✓
Spatula	✓
<b>POWER</b>	
Electric connection	400V/3N 50-60 Hz
Electric power	10 kW
<b>WARRANTY</b>	
Parts (months) exclusions apply	24
Labour (months) exclusions apply	24

# 700 BRATT PANS

## ELECTRIC BRATT PANS



### MODEL NUMBER

Manufacturers Code

**Q70BR/E80**

CR1014719

### LIST PRICE (EXC. GST)

**\$13,470.00**

### CAPACITY

Tank capacity

60 L

### TILTING

Manual tilting

✓

Automatic tilting

✗

### DIMENSIONS

Width

800 mm

Depth

700 mm

Height

900 mm

### FEATURES

Safety shut off device

✓

Self-balanced lid with double steel wall

✓

Manual water fill

✓

Adjustable temperature from 100 to 280°C

✓

IPX5 rated knobs

✓

AISI304 s/steel construction

✓

### POWER

Gas connection

-

Gas power

-

Electric connection

400V/3N 50-60 Hz

Electric power

10 kW

### ACCESSORIES

Splashback (150H)

FC8

**\$350.00**

### WARRANTY

Parts (months) exclusions apply

24

Labour (months) exclusions apply

24

### NOTES

For more accessories - see pages 34 - 36.

**Accessories sold separately from equipment are subject to standard spare parts discount only.**

Scots Ice Australia Baron Queen7 Price List | Issue Date: 01/10/2025 | Supersedes all previous versions



# 700 OVENS

## GAS & ELECTRIC STATIC OVENS



<b>MODEL NUMBER</b>	<b>Q70FO/G800</b>	<b>Q70FO/E800</b>
Manufacturers Code	CR1015209	CR1015189
<b>LIST PRICE (EXC. GST)</b>	<b>\$6,670.00</b>	<b>\$6,350.00</b>
<b>OVEN</b>		
Oven type	gas	electric (static)
Oven internal size	572 x 580 x 300 mm	572 x 580 x 300 mm
<b>DIMENSIONS</b>		
Width	800 mm	800 mm
Depth	700 mm	700 mm
Height	650 mm	650 mm
<b>FEATURES</b>		
For mounting top appliances	✓	✓
Insulated s/steel cooking area	✓	✓
Anti-tipping guides	✓	✓
Insulated stainless steel door	✓	✓
Heavy-duty self-balanced hinges	✓	✓
Ergonomic handle	✓	✓
AISI304 s/steel construction	✓	✓
<b>POWER</b>		
Gas connection	3/4"	-
Gas power	23 Mj	-
Electric connection	-	400V/3N 50-60 Hz
Electric power	-	6 kW
<b>ACCESSORIES</b>		
Chrome wired oven shelf	7GF <b>\$200.00</b>	7GF <b>\$200.00</b>
<b>WARRANTY</b>		
Parts (months) exclusions apply	24	24
Labour (months) exclusions apply	24	24

# 700 REFRIGERATED CHEF BASES

## CHEFS REFRIGERATED BASES WITH DRAWERS FOR MOUNTING COOKING APPLIANCES ON TOP

**R290**



MODEL NUMBER	SNACK 2TN		SNACK 3TN	
Manufacturers Code	FRPL2DZ21Q00021		FRPL2DZ31Q00221	
LIST PRICE (EXC. GST)	\$10,030.00		\$12,100.00	
TEMPERATURE				
Temperature range °C	-2 / +8		-2 / +8	
DOORS				
Number of doors	2		3	
Capacity (L)	140		220	
DIMENSIONS				
Width	1200 mm		1600 mm	
Depth	630 mm		630 mm	
Height	610 mm		610 mm	
FEATURES				
Automatic defrost	✓		✓	
Electronic temperature control	✓		✓	
Insulation thickness 50 mm	✓		✓	
Easy access to the components	✓		✓	
Stainless steel working top	✗		✗	
AISI304 s/steel construction	✓		✓	
POWER				
Electric connection	230V/1N 50 Hz		230V/1N 50 Hz	
Electric power	0.348 kW		0.365 kW	
ACCESSORIES				
Set of drawers (replaces 1 door)	SNACK CR21	\$1,980.00	SNACK CR21	\$1,980.00
Castors kit (4)	SNACK RT	\$580.00	SNACK RT	\$580.00
WARRANTY				
Parts (months) exclusions apply	24		24	
Labour (months) exclusions apply	24		24	

### NOTES

For more accessories - see pages 34 - 36.

**Accessories sold separately from equipment are subject to standard spare parts discount only.**

Scots Ice Australia Baron Queen7 Price List | Issue Date: 01/10/2025 | Supersedes all previous versions

# SALAMANDERS

## ELECTRIC SALAMANDERS



MODEL NUMBER	SEF2/2	SE40/0CB	SE60/0CB
Manufacturers Code	-	-	-
LIST PRICE (EXC. GST)	\$3,300.00	\$6,780.00	\$7,590.00
COOKING SURFACE			
Dimensions of cooking surface	600 x 350 mm	400 x 350 mm	600 x 350 mm
DIMENSIONS			
Width	790 mm	400 mm	600 mm
Depth	400 mm	450 mm	450 mm
Height	390 mm	500 mm	500 mm
FEATURES			
Adjustable height	✗	✓	✓
Fixed height	✓	✗	✗
Incoloy heating elements	✓	✓	✓
AISI304 s/steel construction	✓	✓	✓
POWER			
Gas connection	-	-	-
Gas power	-	-	-
Electric connection	230V/1N 50 Hz	230V/1N 50 Hz	230V/1N 50 Hz
Electric power	20AMP / 4 kW	10AMP / 2 kW	20AMP / 4 kW
ACCESSORIES			
Wall bracket	9008 \$300.00	9003 \$300.00	9003 \$300.00

WARRANTY			
Parts (months) exclusions apply	24	24	24
Labour (months) exclusions apply	24	24	24

# SALAMANDERS

## ELECTRIC RAPID & GAS SALAMANDER



<b>MODEL NUMBER</b>	<b>SDSM6E</b>	<b>SG/0</b>
Manufacturers Code	CR0957089	-
<b>LIST PRICE (EXC. GST)</b>	<b>\$11,990.00</b>	<b>\$7,610.00</b>
<b>COOKING SURFACE</b>		
Dimensions of cooking surface	540 x 365 mm or 1/1GN	575 x 400 mm
<b>DIMENSIONS</b>		
Width	600 mm	750 mm
Depth	530 mm	400 mm
Height	500 mm	460 mm
<b>FEATURES</b>		
Stainless steel mesh radiant elements	✗	✓
Pilot flame and safety thermocouple	✗	✓
Adjustable height 260/160 mm	✓	✗
Control panel with digital display	✓	✗
Rapid warm up (7 sec)	✓	✗
Elements made of tungsten filament	✓	✗
AISI304 s/steel construction	✓	✓
<b>POWER</b>		
Gas connection	-	3/4"
Gas power	-	26 Mj
Electric connection	400V/3N 50-60 Hz	-
Electric power	4.5 kW	-
<b>ACCESSORIES</b>		
Wall bracket	-	9013 <b>\$410.00</b>
<b>WARRANTY</b>		
Parts (months) exclusions apply	24	24
Labour (months) exclusions apply	24	24

### NOTES

For more accessories - see pages 34 - 36.

**Accessories sold separately from equipment are subject to standard spare parts discount only.**

Scots Ice Australia Baron Queen7 Price List | Issue Date: 01/10/2025 | Supersedes all previous versions

# 700 ACCESSORIES

## NEUTRAL ELEMENTS, CABINETS & STANDS



### NEUTRAL TOPS

200mm wide neutral top with fixed front	Q70NE/200	\$1,770.00
400mm wide neutral top with fixed front	Q70NE/400	\$2,040.00
600mm wide neutral top with fixed front	Q70NE/600	\$2,440.00
800mm wide neutral top with fixed front	Q70NE/800	\$2,740.00
400mm wide neutral top with full length drawer	Q70NEC/410	\$2,510.00
600mm wide neutral top with full length drawer	Q70NEC/610	\$3,020.00
800mm wide neutral top with full length drawer	Q70NEC/810	\$3,430.00



### STAINLESS STEEL FLOOR STAND 620H

400mm wide stainless steel floor stand with shelf	70CAV4	\$1,770.00
600mm wide stainless steel floor stand with shelf	70CAV6	\$2,250.00
800mm wide stainless steel floor stand with shelf	70CAV8	\$2,380.00
1200mm wide stainless steel floor stand with shelf	70CAV12	\$2,260.00



### STAINLESS STEEL OPEN CABINET 620H

200mm wide stainless steel open cabinet	70VA200	\$1,180.00
400mm wide stainless steel open cabinet	70VA400	\$1,390.00
600mm wide stainless steel open cabinet	70VA600	\$1,590.00
800mm wide stainless steel open cabinet	70VA800	\$1,890.00
1200mm wide stainless steel open cabinet	70VA120	\$2,350.00
1600mm wide stainless steel open cabinet	70VA160	\$3,370.00



### ACCESSORIES FOR OPEN CABINETS

200mm wide stainless steel door with fittings	QP14	\$670.00
300mm wide stainless steel door with fittings	QP13	\$650.00
400mm wide stainless steel door with fittings	QP12	\$690.00
500mm wide stainless steel door with fittings	QP15	\$800.00



400mm wide stainless steel drawer kit 1/1	QKC11	\$1,640.00
800mm wide stainless steel drawer kit 2/1GN	QKC21	\$2,220.00



200mm wide stainless steel bottle holder	VB700	\$1,750.00
--	-------	------------

Set of runners 1/1GN	QRG11	620.00
Set of runners 2/1GN	QRG21	\$650.00

30°C to 90°C cabinet warmer	7KR	\$1,160.00
-----------------------------	-----	------------

Central upright for neutral cabinet	QMC	\$220.00
-------------------------------------	-----	----------

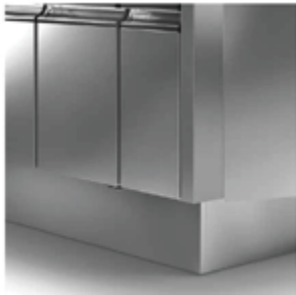
## 700 ACCESSORIES

### SPLASHBACKS, PLINTH KICK PLATES & CASTORS



#### REAR SPLASH-BACK (FALSE CHIMNEY) 150H

200mm wide rear splashback	FC2	\$265.00
400mm wide rear splashback	FC4	\$310.00
600mm wide rear splashback	FC6	\$340.00
800mm wide rear splashback	FC8	\$350.00
1000mm wide rear splashback	FC10	\$520.00
1200mm wide rear splashback	FC12	\$620.00
1600mm wide rear splashback	FC16	\$620.00



#### PLINTH KICK PLATES

400mm wide stainless steel front kick plate	ZA40	\$350.00
600mm wide stainless steel front kick plate	ZA60	\$400.00
800mm wide stainless steel front kick plate	ZA80	\$385.00
1200mm wide stainless steel front kick plate	ZA120	\$420.00
1600mm wide stainless steel front kick plate	ZA160	\$440.00
2000mm wide stainless steel front kick plate	ZA200	\$475.00
2400mm wide stainless steel front kick plate	ZA240	\$495.00
700mm wide stainless steel side kick plate	ZL70	\$290.00



#### CASTORS

Set of four (4) castors, two with brakes	RT	\$580.00
--	----	----------

#### NOTES

# 700 ACCESSORIES

## SHELVING, BASKETS & MISCELLANEOUS



### CHROMED WIRE OVEN SHELVES

Chrome wired oven shelf for standard oven	7GF	\$200.00
Chrome wired oven shelf for large oven	7GFL	\$330.00



### ACCESSORIES FOR GAS RANGES

Removable hotplate cover	N7BA	\$350.00
Smooth cast iron plate for single burner	7PRL	\$530.00
Ribbed cast iron plate for single burner	7PRR	\$595.00



### ACCESSORIES FOR GRIDDLES

400mm wide removable splashback	7AFT4	\$440.00
600mm wide removable splashback	7AFT6	\$420.00
800mm wide removable splashback	7AFT8	\$485.00
1200mm wide removable splashback	70XFTP12	\$475.00



Smooth scraper	FT-R	\$320.00
Ribbed scraper	FT-LR	\$160.00



Cleaning drawer installation 400/1200	NXFTC4	\$420.00
Cleaning drawer installation 600/800	NXFTC6/8	\$450.00
Plug for cleaning	NXFTT	\$300.00



### FRYER BASKETS

10L capacity basket for 610 fryers	CF10	\$220.00
15L capacity full size basket	CF15	\$230.00
15L capacity half size basket	CF15P	\$220.00



### PASTA COOKER BASKETS

1/6 pasta cooker basket. LHS handle (1 pcs)	CCP16S	\$290.00
1/6 pasta cooker basket. RHS handle (1 pcs)	CCP16D	\$290.00
1/3 pasta cooker basket. Two handles (1 pcs)	CCP13L	\$385.00
1/3 pasta cooker basket. One handle (1 pcs)	CCP13F	\$385.00



### DIRECTABLE WATER FLUE

Directable water flue	QCH20	\$1,500.00
-----------------------	-------	------------









WORKING WITH AUSTRALIA'S FINEST DEALERSHIPS AND  
DESIGNERS AND OFFERING THE BEST EQUIPMENT TO SUIT  
YOUR NEEDS, WE ARE AUSTRALIA'S CHOICE FOR INNOVATIVE  
FOOD SERVICE EQUIPMENT SOLUTIONS

## CUSTOMER SERVICE

Free Call: 1800 222 460 (\*Nation wide\*)

Phone: (02) 9684 5666

Email: [service@scotsice.com.au](mailto:service@scotsice.com.au)

Email: [info@scotsice.com.au](mailto:info@scotsice.com.au)

**SCOTS ICE AUSTRALIA**  
foodservice equipment

ABN: 54 080 084 260

448-452 Victoria Street

Wetherill Park, NSW 2164 Australia

**[www.scotsice.com.au](http://www.scotsice.com.au)**

an Australian Ali Group Partner



The Spirit of Excellence