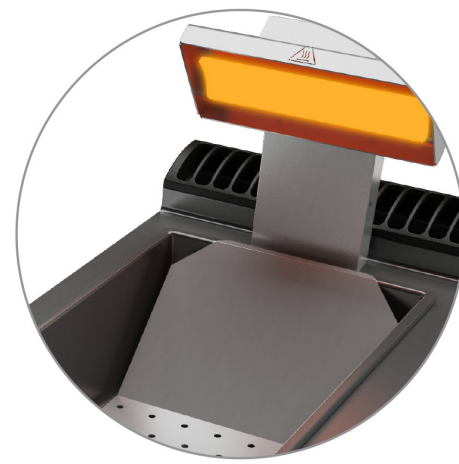


Electric Chip Scuttle

- lower resistance underneath the tub
- adjustable temperature from 30 to 90°C via thermostat



Dry-heat container also with top infrared heating element.



Multi Cooking Bratt Pan

- steel fixed tank
- heating elements underneath the bottom
- adjustable temperature from 50 to 300°C.



Pan with incaloy-sheathed heating elements placed on the underside in order to cook with a uniform temperature.

