

SERIE GIANO

Code CR1010249 **Model** N1100BG/G450



GAS BAIN-MARIE PASS THROUGH - TOP VERSION

General characteristics

1100 Pass-Through Line is characterized by its versatility, its perfect modules matching and their sturdiness, thanks to the 2 mm thick cooking tops in s/s AISI 304 cut with laser. All these features allow to assemble central cooking blocks on specific customers' request. Reliability and high efficiency are granted by tested components and high performances of heating elements. Stands can be equipped with pass-through ovens, heated, ventilated, neutral, either suspended or cantilever cupboards. Appliances in compliances with CE standards.



BAIN-MARIE

Technical/functional characteristics

- Outer casing in s/s 18/10 and Schotch Brite finishing.
- Top with thickness 2mm.
- Shaped cooker control panel with knobs slanted towards the operator.
- Gastro Norm tank (2x 2/3) .
- Water fill by mean of a water tap.
- Perforated false bottom to support containers.
- Temperature regulation from 30° to 90°C.
- Tank equipped with overflow device.
- Burner controlled by thermostatic valve with safety thermocouple .
- Piezo ignition.

Technical Data

Dimensions	
Width (mm)	450
Depth (mm)	1100
Height (mm)	280
Gas connection (Ø)	-
Electric connection (V/~ /HZ)	-
Cold water connection (Ø)	1/2"
Hot water connection (Ø)	-

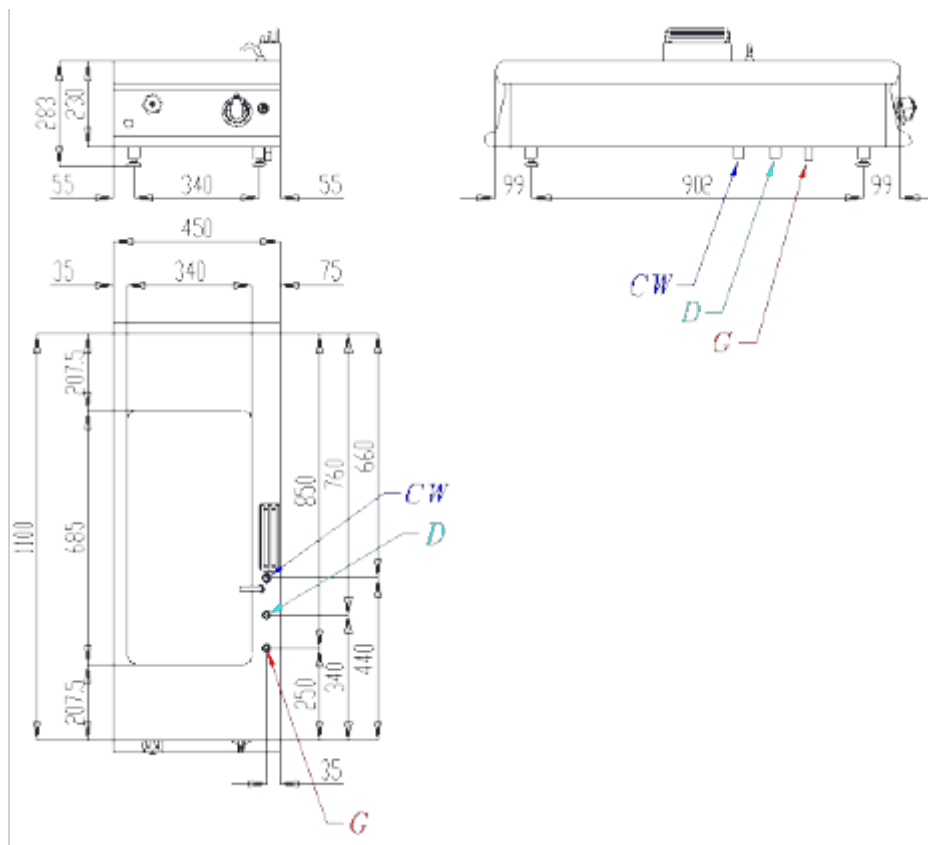
Cold soft water connection (Ø)	-
Drain (Ø)	1"
Gas power (KW)	3,6
Electric power (KW)	-
Plate dimensions (mm)	-
Tank capacity (Lt)	-
TANK DIMENSIONS	-
Internal ovens dimension(mm)	-

SERIE GIANO

Code CR1010249 **Model** N1100BG/G450



GAS BAIN-MARIE PASS THROUGH - TOP VERSION



Code	Description
14051119	CONTAINER LID GN1/9
14051014	CONTAINER GN1/4 H150 MM
14051112	CONTAINER LID GN1/2
14051123	CONTAINER LID GN2/3
14051016	CONTAINER GN1/6 H150 MM
14051113	CONTAINER LID GN1/3
14051011	CONTAINER GN1/1 H150 MM
14051019	CONTAINER GN1/9 H150 MM
14051114	CONTAINER LID GN1/4
14051012	CONTAINER GN1/2 H150 MM
14051023	CONTAINER GN2/3 H150 MM
14051116	CONTAINER LID GN1/6
14051013	CONTAINER GN1/3 H150 MM
14051111	CONTAINER LID GN1/1