



2 Trolleys

Tray type: GN2/1 | EN2

Model: ECBG-402-S-RTF

Material code: RF42TFREE6K312CC1A

+3°C	-40°C / -18°C	-5°C / -40°C	-2°C / +18°C	-18°C / -21°C	+10°C / +16°C	-18°C / +3°C	-18°C	-35°C / -18°C
Soft or hard blast chilling	Anisakis Killer	Continuous cycle	Storage	Negative Storage	Crystallisation	Thawing	Soft or hard freezing	Tapeworm Killer

STRUCTURAL CHARACTERISTICS

- AISI 304 stainless steel panel construction with 80 mm-thick polyurethane foam insulation
- Stainless steel exterior (Scotch-Brite satin finish)
- Door with a rubber sweeper seal, complete with closing hinges
- Ergonomic vertical handle with a magnetic closure
- Access ramp equipped with a liquid-collecting grille and filtering system (optional)
- Remote motor-operated condensing unit
- Set up as standard for R452A refrigerant fluid
- All the surfaces, body's metal components and internal reinforcements are made of AISI 304 or AISI 316 stainless steel and have been tested to withstand a saline environment for at least 800 hours
- Anti-condensation heating element fitted under the door seal
- Cell fitted with easy-to-clean rounded corners and AISI 304 30/10 stainless steel internal bumpers
- Easy-to-clean interior, thanks to the suspended evaporator that quickly removes the washing water, according to the indications of the NFS and UNI EN 14159 standards
- Copper-aluminium evaporating coil, cataphoresis-painted with non-toxic epoxy resin, installed on the side, together with fairing that can be opened via a special safety key for easy and proper maintenance; all PED and UL-tested at a pressure of 30 bar.
- Highly ventilated evaporator to ensure the cooling system's maximum efficiency

- Interlocking flooring, reinforced with a 30/10 steel sheet and non-slip 5WL finish
- Recessed or above-floor installation possible
- External bumper to protect the control panel
- Patented chamber humidity-injecting system

EQUIPPED INTERIOR

- Thick AISI 304 stainless steel internal bumper to prevent any trolley-related damage
- Quick-release heated core probe with 4 measuring points

COMMANDS, CONTROLS AND SAFETY DEVICES

- Evaporator fan speed adjusted via the INVERTER
- Automatic storage at the end of the blast chilling cycle
- 7" high-definition FULL TOUCH display
- Photo-identifiable processes
- USB connection for uploading and downloading data/recipes
- IoT connectivity as standard
- Electrical connections at the front of the padlocked panel
- Control-activated chamber sanitisation system with active ions (HI-GIENE)

VERSIONING

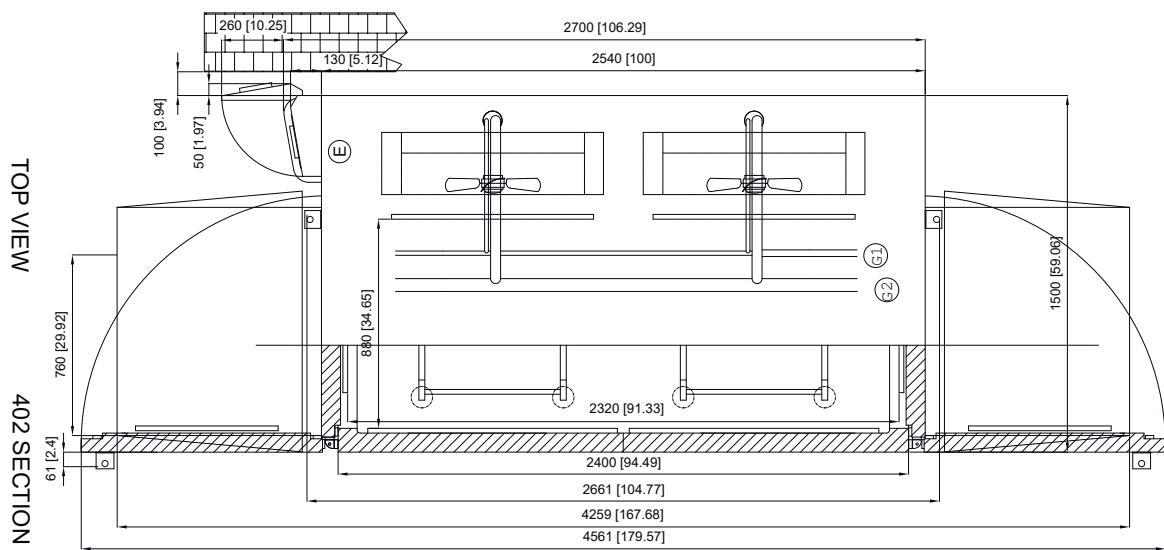
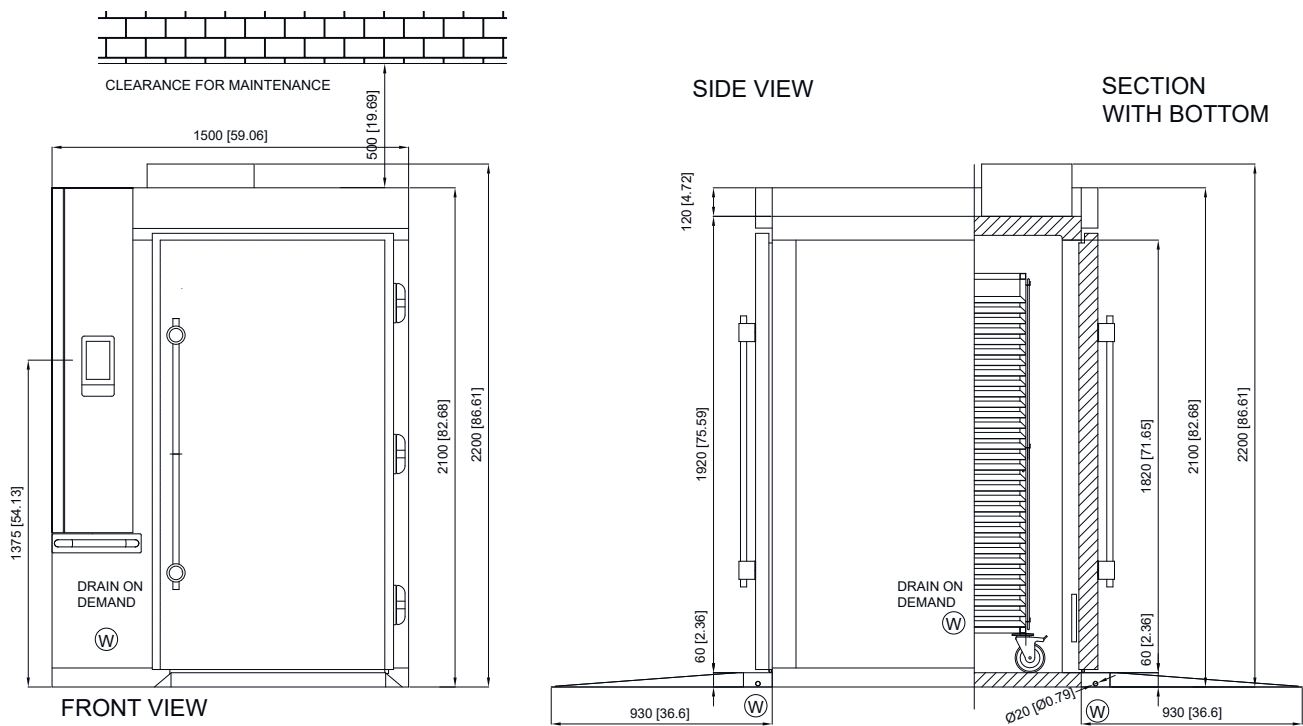
- Can be set up for the following eco-friendly gases on request: R404a, R449a, R448a, R507 and R744 (CO2)

WARRANTY

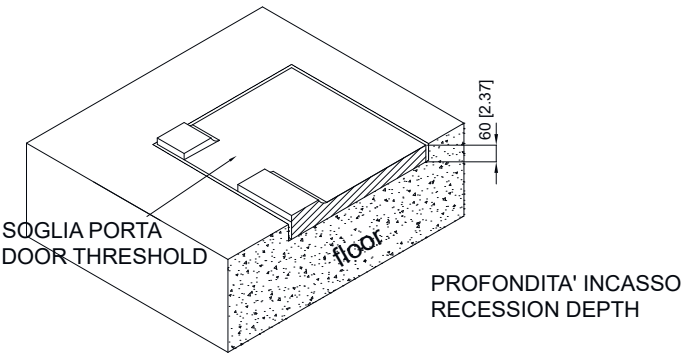
- 3 years warranty by registering the unit on the Friulinox Cloud and sending the installation report

INTERFACE





- ① INGRESSO REFRIGERANTE
REFRIGERANT INLET
- ② USCITA REFRIGERANTE
REFRIGERANT OUTLET
- ③ CONNESSIONE ELETTRICA
ELECTRICAL CONNECTION
- ④ CONNESSIONE SCARICO
DRAIN CONNECTION
- DIMENSIONI mm
DIMENSIONS [in]



DIMENSIONE INCASSO: +5CM
RECESSION DIMENSION: +5 CM

TECHNICAL DATA

Range temperatura di funzionamento	+45°C / -40°C	°C
Motor	Remote	
Codice UMC remota standard ad aria	RF45CNFE1021410029	
Control	7"	
No. of functions	3	
No. of doors	2	
Floor type	Insulated base	

USABLE INTERNAL DIMENSIONS

Door Span Width	880	mm
Internal Depth	2320	mm
Door Span Height	1820	mm
Panel thickness	80	mm

EXTERNAL DIMENSIONS

External Width	1500	mm
External Depth	2700	mm
External Height	2200	mm

PACKAGING DIMENSIONS

Packaging Width	2400	mm
Packaging depth	2 x 1760	mm
Packaging Height	1740	mm

WEIGHTS

Weight	976	kg
Gross Weight	1103	kg

YIELDS AND PERFORMANCES

Yield per cycle +90/+3°C	360	kg
Yield per cycle +90/-18°C	240	kg
Quantity of 20T EN1-GN1/1-600x400 Trolleys	4	N
Quantity of 20T EN2-GN2/1-600x800 Trolleys	2	N
Maximum load [kg/m²] - Point load (kg/cm²)	[4000] - (150)	
Gas Type	R404A/R452A/R448A/R449A	
Power supply	380-420/3N~/50	V/Hz
Max. power	12376	W
Voltage	400	V
Cooling power	18930	W