

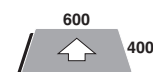
HUMIDIFIED PROOFING CABINET

LAINOX®

BLV084

DIGITAL PROGRAMMABLES CONTROLS
GLASS DOOR

6+6 x (600 x 400)



CONSTRUCTION DETAILS

- Stainless steel 18/10 AISI 304 cooking compartment with long radius rounded corners for a perfect cleaning
- Perfectly smooth and water-proof compartment
- Cooking compartment 35 mm thermic insulation
- Proofer front panel seal made with heat and age resistant silicon rubber
- Tempered and printed glass doors

SAFETY FEATURES

- Electronic control panel with push-buttons for manual functions
- System to set and to control the percentage of humidity during cooking

STANDARD EQUIPMENT

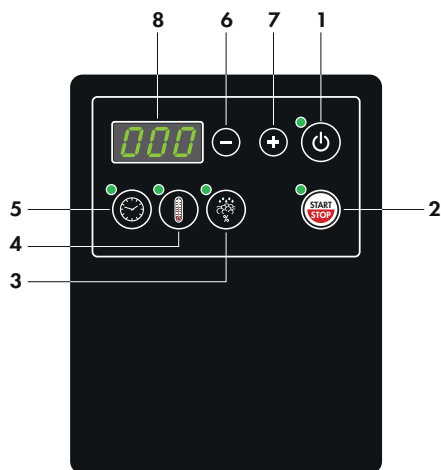
- Side runners

ELECTRIC HEATING SYSTEM

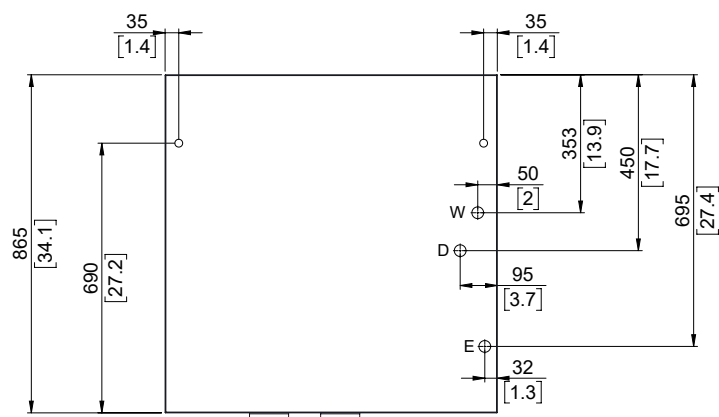
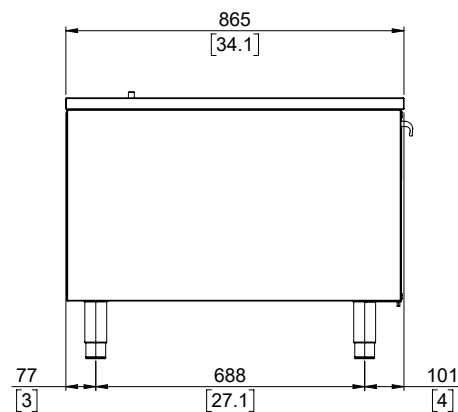
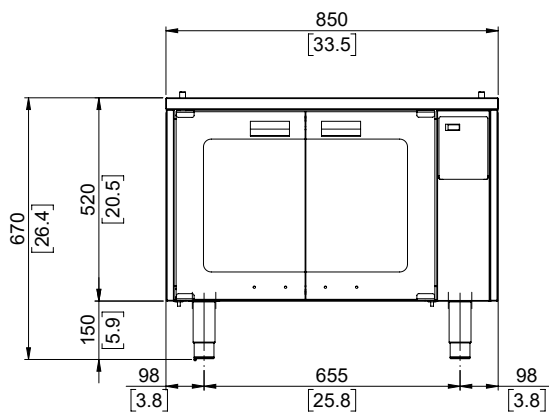
- Ventilated heating provided by highefficiency protected heating elements

TECHNICAL DATA

Capacity	EN	6+6 x (600 x 400)	Distance between layers	mm	40
Dimensions	mm	850 x 865 x 670 h	Total electric power	Kw	2,6
Dimensions with packing	mm	950 x 1000 x 1040 h	Power supply voltage	V - Hz	1N - AC 230 V - 50 Hz
Weight - Net / Gross	kg	70,6 / 90,6	Working temperature	°C	30 ÷ 90



- 1 - ON/OFF
- 2 - START/STOP button
- 3 - Humidity setting button
- 4 - Temperature setting button
- 5 - Timer setting button
- 6 - UP/DOWN buttons
- 7 - UP/DOWN buttons
- 8 - Display



W	Water inlet	G 3/4"
D	Liquid discharge	Ø 10
E	Electric power supply cable inlet	-

Dimensions: Millimeters [inches]



The data reported in this document is to be considered non-binding. The company reserves the right to make changes at any time, without prior notice

