

MODEL
Q90FREV/G423F
CODE
CR1209959

1 BASIN GAS DEEP FRYER 23 LT - TOUCH CONTROL AND OIL FILTRATION SYSTEM

QUEEN9

- AISI 304 stainless-steel bases and worktops, Scotch-Brite finish
- Depth of 900 mm for high power and performance
- 20/10 worktop thickness
- Twin-piece knobs prevent infiltration of dirt and have an IPX5 water ingress protection rating
- Wide range of accessories



Technical / functional characteristics

- High-output electronically-controlled deep fryer.
- AISI 304 stainless-steel worktop, 20/10 thickness.
- AISI 18/10 stainless-steel tanks with cold zone and foam overflow area.
- Pressed frying tank with rounded internal corners.
- Large front recess to prevent spillages caused by overflow of oil and foam.
- 23 L capacity tank.
- IPX5 water ingress protection rating.
- Large cold zone to collect food particles and extend the useful life of the cooking oil.
- Safety thermostat (230°C) to prevent oil from overheating.
- Heat provided by stainless-steel burners with optimised combustion positioned outside the tank.
- Automatic ignition of main burners using electronic flame controller with no pilot light.
- Power modulated heating (variable power delivered according to time and temperature). This special technology offers increased efficiency coupled with optimised energy consumption.
- Control panel with 7" (TPC) high-resolution touch screen display and electronic controller for managing cooking temperature from 0 to 185 °C with an accuracy of ± 1 °C, frying programmes, HACCP alarms, tank cleaning cycle, preheating and 100 °C standby function.
- Temperature control available with melt cycle up to 100 °C.
- Manage up to 30 frying programmes: setting of times, temperatures and maintenance times, representative images. Convenient recipe recall using picture menu. Recipes can be loaded using a USB stick in order to share parameters with several deep fryers so that uniform frying standards in different environments are still easy to achieve.
- Special software recognises frying programmes whose characteristics mean they can be carried out simultaneously and at the same time advises which programmes are incompatible.
- Oil use control software (OLC).


Gas Supply

Oil Cleaning Filter

Hot-Oil Circulation process

Oil Life Counter

Certification IPX5

Touch Control Panel

Oil Pump Filtering

DIMENSIONS	
Width (mm)	400
Depth (mm)	900
Height (mm)	900
Gas connection (Ø)	1/2"
Electric connection (V/~ /Hz)	230V/1N 50-60 Hz
Cold water connection (Ø)	
Hot water connection (Ø)	

Cold soft water connection (Ø)	
Drain (Ø)	
Gas power (Mj/hr)	90
Electric power (kW)	0.2
Plate dimensions (mm)	
Tank capacity (L)	23
Tank dimensions (mm)	340 x 420 x 585
Internal oven dimensions (mm)	

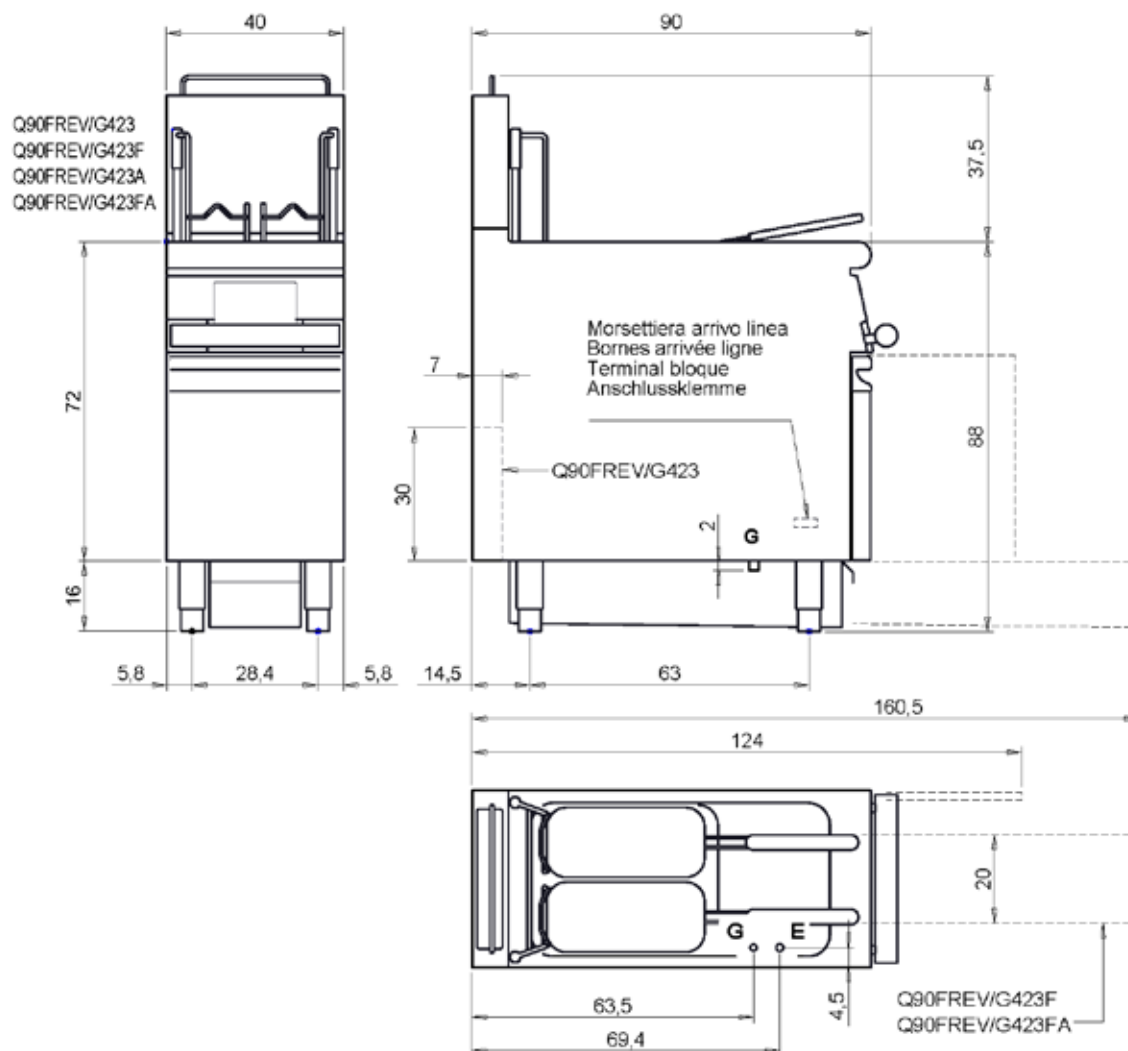
MODEL

Q90FREV/G423F

CODE

CR1209959

MISURE IN cm - DIMENSIONS IN cm - ABMESSUNGEN IN cm - MESURES EN cm
MEDIDAS EN cm - MATEN IN cm - DIMENSIONES EN cm



Legenda - Legende - Key - Légende - Leyenda - Legenda - Legenda

E	Pressacavo entrata linea elettrica - Stopfbuchse - Electric cable stress relief - Presse étoupe de câble él - Pisacable - Elektrische kabelwartel - Entrada cabo eléctrico	G	Arrivo gas - Gasanschluss - Gas connection - Arrivée gaz - Union de gas - Gasaansluiting - Ligação gás EN 10226-1 R 1/2 ; EN ISO 228-1 G 1/2 (DK)
S	Attacco scarico acqua - Wasserablauf - Water outlet - Vidange de l'eau - Desaguadero - Wateraftapaansluiting - Junção descarga água	H20	Arrivo acqua - Wasseranschluss - Water inlet - Arrivée eau - Union de agua - Wateraansluiting - Junção alimentação água
S1	Scarico vasca - Wannenabflussrohr - Pan outlet - Vidange du bac - Descarga cuba - Water toevoer - Descarga da cuba	A1 =	Calda - Heiss - Warm - Chaude - Caliente - Warm - Morno
S2	Valvola di depressione - Anti-depression valve - Unterdruck ventil - Soupape de dépression - Válvula de depresión - Onderdrukkelep - Válvula de depressão	A2 =	Fredda - Kalt - Cold - Froid - Fria - Koude - Frio
S3	Scarico acqua intercapedine - Wasserablauf Zwischenraum - Jacket water drain Evacuation eau double envelope - Descarga de agua intersticios - Afvoer water tussenruimte - Descarga de água na marmitta com Sistema de aquecimento indirecto	L	Rubinetto di livello - Level tap - Wasserhahn - Robinet de niveau - Grifo de nível - Niveaakraan - Torneira de nível
S4	Scarico - Abflussrohr - Drain - Tuyau d'évacuation - Tubo de drenaje - Aftapbuis - Tubulação de dreno		