



EasyPan | Fixed Cylindrical Pans

The EASYPAN steam pan is the extremely modular and professional solution developed by Firex to meet the needs of small restaurants and catering services to treat particularly acid products, thanks to the use of AISI 316 stainless steel.

Modular pans for restaurants and catering services

This type of modular industrial pans, whether cylindrical or rectangular, is characterized by a high quality of materials and construction processes; all to ensure maximum safety and reliability over time. The Easypan steam cooker range is available in both direct and indirect versions, with a bottom, and gas, steam or electrically heated.

INDIRECT ELECTRIC HEATING **WITHOUT AUTOCLAVE**

MODEL	CAPACITY lt	POWER kW	DIMENSIONS mm	NOTES
PMR IE 200	220	32	1175 x 1000 x 900H	3N + PE AC 4--V 50/60 Hz
PMR IE 300	325	36	1130 x 1130 x 900H	
PMR IE 500	480	36	1130 x 1130 x 950H	
PMR IE 510	540	45	1550 x 1380 x 900H	

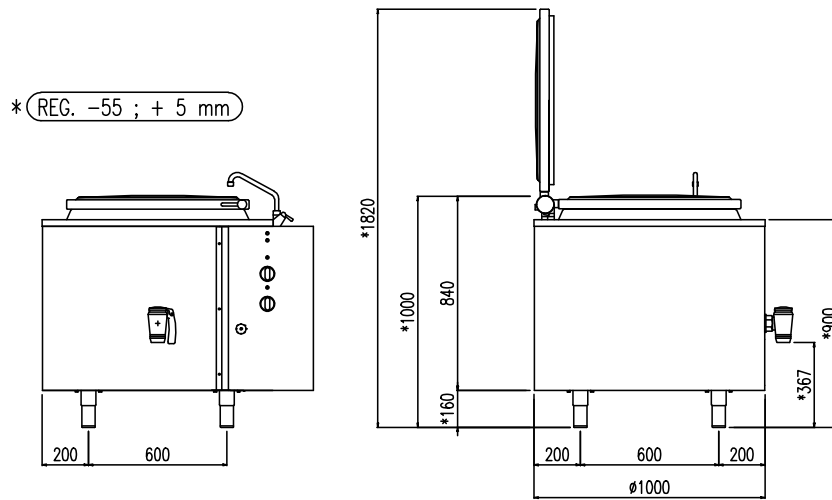


Easypan can be used for

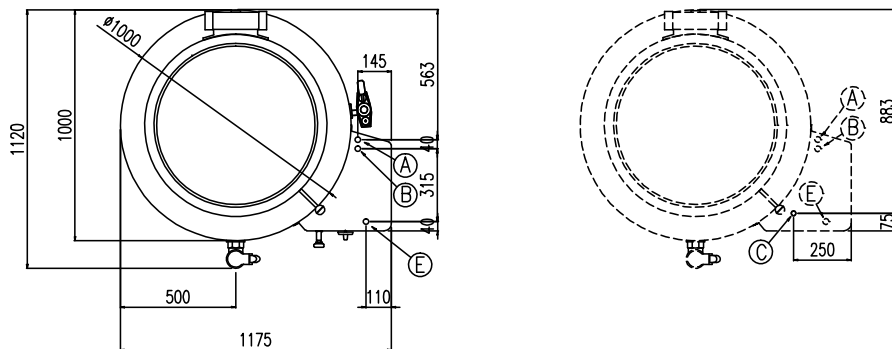
- Broths
- Rice
- Pasta
- Thick soups
- Thin soups
- Potato or vegetable purees
- Bechamel sauce
- Custards

boiling | **braising** | pasteurising | tilting | mixing | cooling | frying | underpressure | vacuum cooking | cutting | washing | drying

TECHNICAL DRAWING MOD. PMR IE 200



PAAR1014B

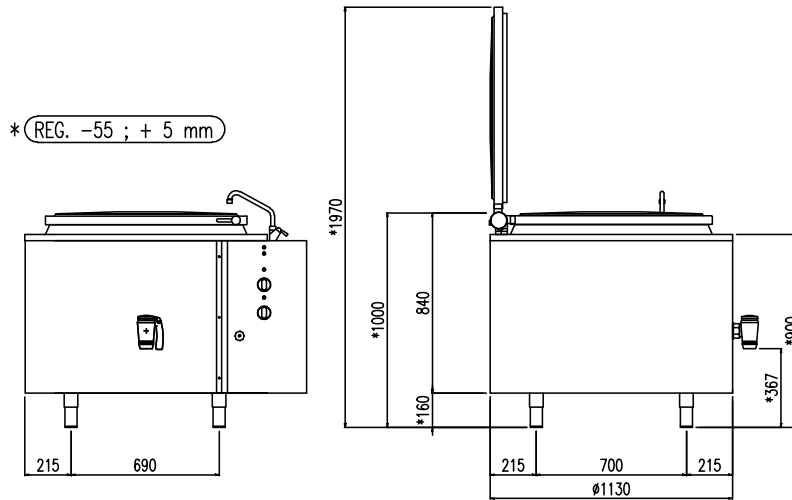


E	Potenza assorbita Electric power	Elektrische Leistung Puissance électrique	32.00 (kW)
E	Collegamento Elettrico Electric connection	Elektrische Verbindung Connexion électrique	380-415V 3N ~ 50/60Hz
A	Allacciamento Acqua Calda Hot water inlet	Warmwasseranschluss Raccordement eau chaude	1/2"
B	Allacciamento Acqua Fredda Cold water inlet	Kaltwasseranschluss Raccordement eau froide	1/2"

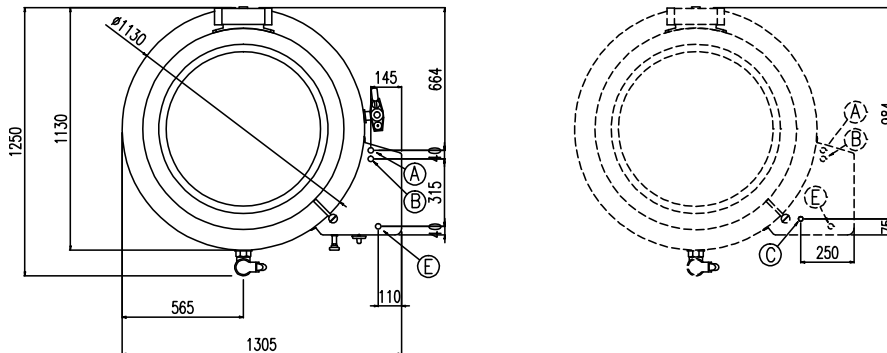
Optional : PAAR1014A/B

C	Carico automatico intercapedine Autom. Jacket Water-Charge	Automatische WasserStandsKontrolle Remplissage Automatique	1/2"
----------	--	--	-------------

TECHNICAL DRAWING MOD. PMR IE 300



PAAR1014B

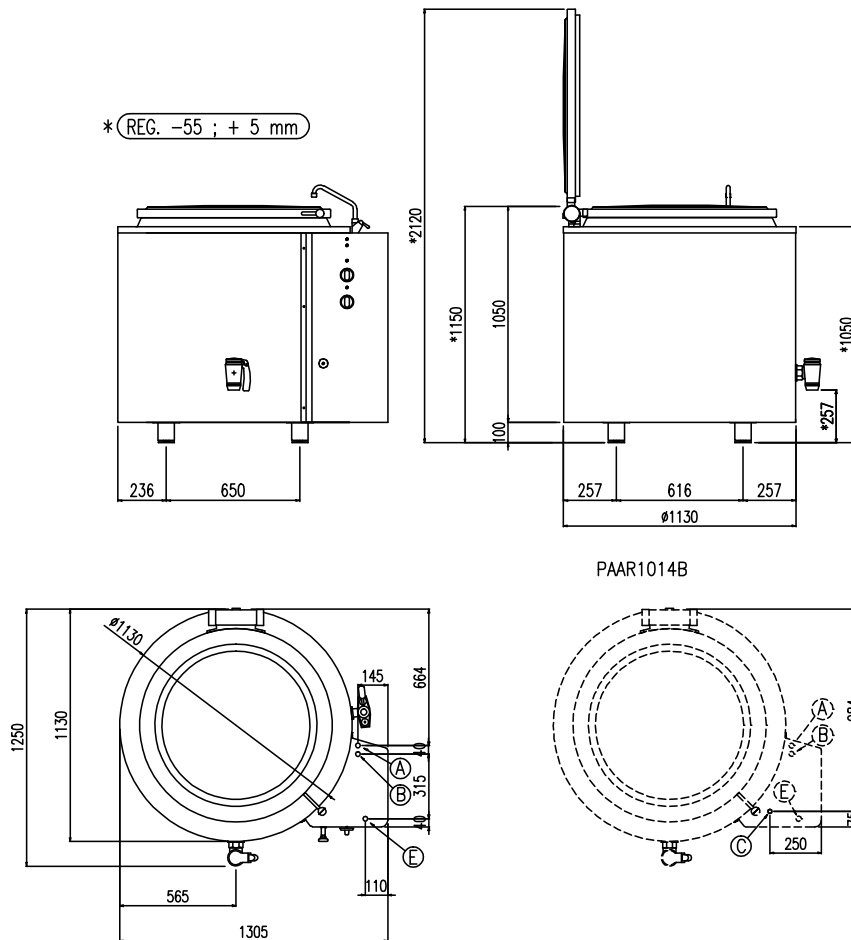


E	Potenza assorbita Electric power	Elektrische Leistung Puissance électrique	36.00 (kW)
E	Collegamento Elettrico Electric connection	Elektrische Verbindung Connexion électrique	380-415V 3N ~ 50/60Hz
A	Allacciamento Acqua Calda Hot water inlet	Warmwasseranschluss Raccordement eau chaude	1/2"
B	Allacciamento Acqua Fredda Cold water inlet	Kaltwasseranschluss Raccordement eau froide	1/2"

Optional : PAAR1014A/B

C	Carico automatico intercapedine Autom.Jacket Water-Charge	Automatische WasserStandsKontrolle Remplissage Automatique	1/2"
----------	---	--	-------------

TECHNICAL DRAWING MOD. PMR IE 500



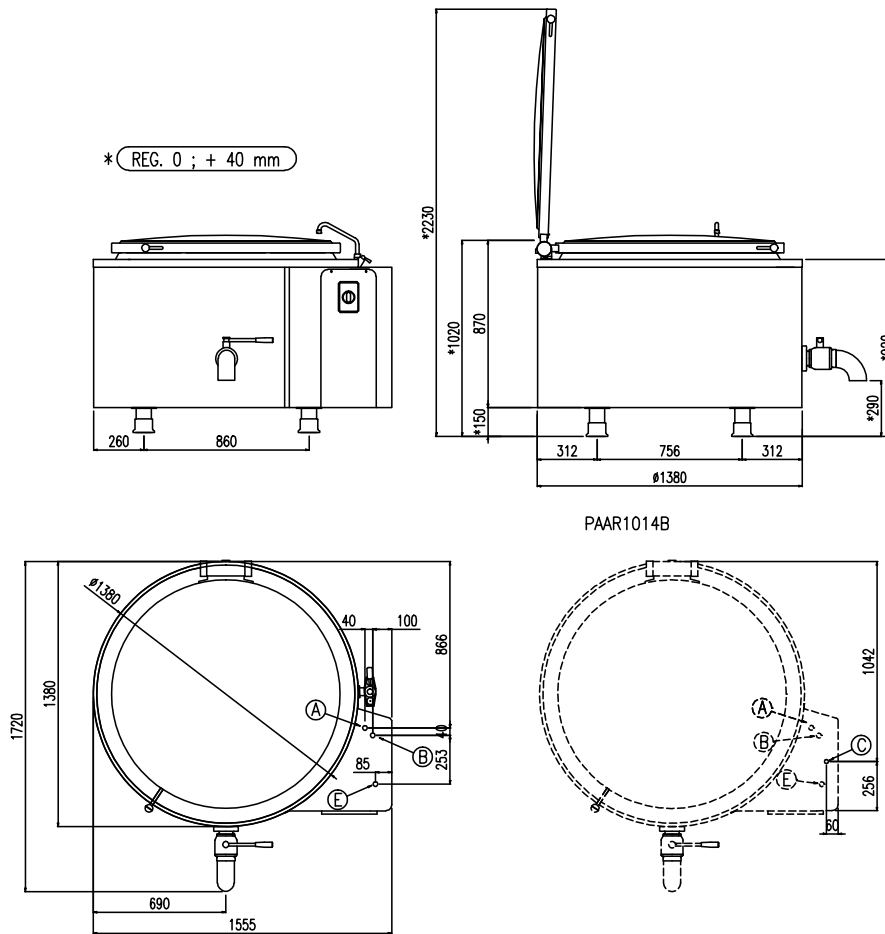
PAAR1014B

E	Potenza assorbita Electric power	Elektrische Leistung Puissance électrique	36.00 (kW)
E	Collegamento Elettrico Electric connection	Elektrische Verbindung Connexion électrique	380-415V 3N ~ 50/60Hz
A	Allacciamento Acqua Calda Hot water inlet	Warmwasseranschluss Raccordement eau chaude	1/2"
B	Allacciamento Acqua Fredda Cold water inlet	Kaltwasseranschluss Raccordement eau froide	1/2"

Optional : PAAR1014A/B

C	Carico automatico intercapedine Autom.Jacket Water-Charge	Automatiche WasserStandsKontrolle Remplissage Automatique	1/2"
----------	---	--	-------------

TECHNICAL DRAWING MOD. PMR IE 510



E	Potenza assorbita Electric power	Elektrische Leistung Puissance électrique	45.00 (kW)
E	Collegamento Elettrico Electric connection	Elektrische Verbindung Connexion électrique	380-415V 3N ~ 50/60Hz
A	Allacciamento Acqua Calda Hot water inlet	Warmwasseranschluss Raccordement eau chaude	1/2"
B	Allacciamento Acqua Fredda Cold water inlet	Kaltwasseranschluss Raccordement eau froide	1/2"

Optional : PAAR1014B

C	Carico automatico intercapedine Autom.Jacket Water-Charge	Automatiche WasserStandsKontrolle Remplissage Automatique	1/2"
----------	---	---	-------------