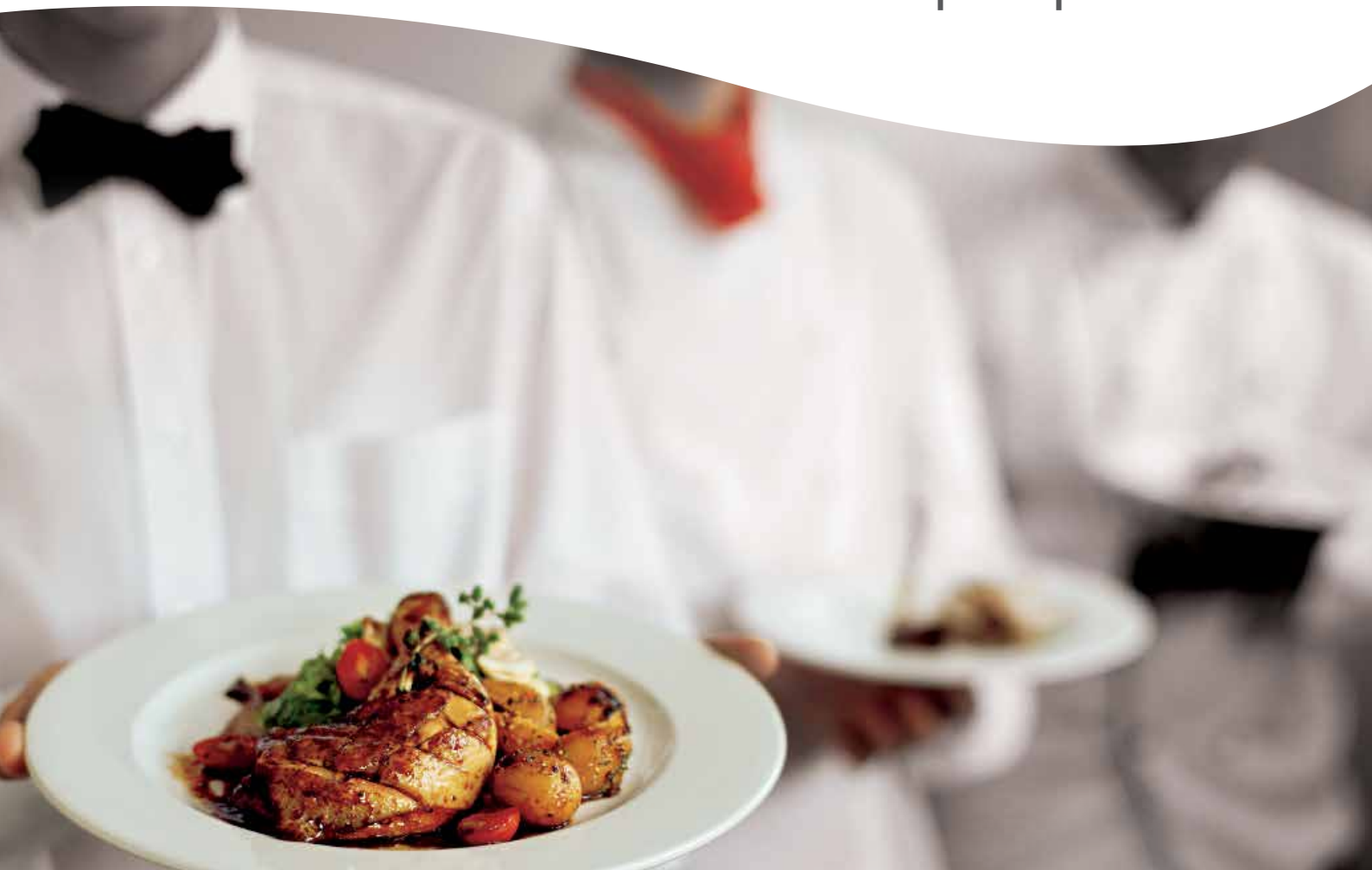




Our proposals





Talent



product specifications

- Outer casing made from AISI 441, worktop and control panel made from AISI 304.
- “Thermo-block” heating elements: armoured heating elements included made from a fusion of highly heat-resistant aluminium.
- Supplied with a water filling system.
- Double-walled lid without perimeter seal.
- Two USB outputs positioned below the control panel (compartment zone) for storing recipes and updating software.

technical data

| | |
|-------------------|--------------|
| Width cm | 60 |
| Depth cm | 90 |
| Height cm | 87 |
| Tank cm (LxPxH) | 30,5x58x16,5 |
| Tank Capacity lt | 17 (nominal) |
| Heaters | 5 |
| Electric Power Kw | 10 |
| | |
| | |



Wok



product specifications

- Outer casing and feet made from AISI 304 steel for the 900 range and stainless steel for the 700 range.
- Worktops with a 20/10 thickness with 550x720 mm recess or 950x720 mm for the 900 range, 550x520 mm or 950x520 mm for the 700 range.
- Right rear drain with a 22 mm diameter, configured for earth connection.
- Available in versions with compartment or doors: for the 60 module, 2 M30 doors; for the 100 module, 2 M50 doors.
- With grease collection tray (approx. 2/3 lt capacity).

technical data

| dimensions cm | burners |
|---|------------------------|
| 60x70/90x87 h (700/900 series) | 1 x 10 Kw 1 x 14 Kw |
| 100x70/90x87 h (700/900 series) | 2 x 10 Kw 2 x 14 Kw |
| 45x110x87 h (1100 series) | 2 x 10 Kw 2 x 14 Kw |
| 90x110x87 h (1100 series) | 4 x 10 Kw 4 x 14 Kw |
| Large ring diameter cm | 41 Ø |
| Small ring diameter cm | 21,5 Ø |
| Ring height cm | 10 |
| Burner distance cm (from the highest part of the ring) | 13 (10Kw) 16 (14Kw) |



Fry top



product specifications

- Made from AISI 304, plate realised in 510D steel.
- Available with smooth/mixed plate (2/3 smooth, 1/3 ribbed), normal or chrome-plated.
- Valved only.
- Also available in the top version, on compartment or with door.
- Splashguard standard-fitting.
- Supplied with a grease collection draw (40 or 80 for the gas version).

technical data

| | |
|--------------|-------|
| Width cm | 120 |
| Depth cm | 70/90 |
| Height cm | 87 |
| Gas Power Kw | 19,5 |
| Burners | 3 |
| Taps | 3 |
| Drains | 2 |



Barbecue



product specifications

- AISI 304 construction.
- 32 kW (gas) total power.
- Cast iron burners, pilot flame and thermocouple.
- 4 independent heating zones.
- Reversible cast iron grids.
- Dimensions: 120x92x28 cm.
- Cooking area: 108x53,5 cm.


technical data

| | |
|-----------------|----------|
| Width cm | 120 |
| Depth cm | 90 |
| Height cm | 87 |
| Gas Power Kw | 32 |
| Cooking Area cm | 108x53,5 |



baron[®]
kitchens for professionals

Via Del Boscon, 424
32100 Belluno - Italy
T +39 0437 855411
W baronprofessional.it
M info@baronprofessional.com

Olis is a company of 
G R O U P

