

Electric Solid Tops

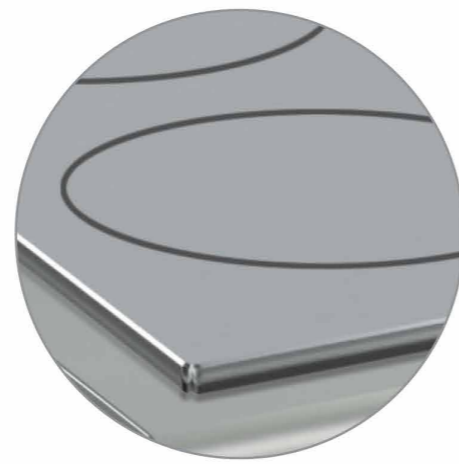
- Cooking plate in polished chrome-molybdenum 1.8 mm thick, high temperature resistant
- Perimetral fat-collecting channel with drain to floor
- Griddle heating (4 zones) via four 2,5 kW heating elements;
- heating elements temperature adjustment via thermostat, activated via tilted and recessed ergonomic knobs.

Oven - General Features

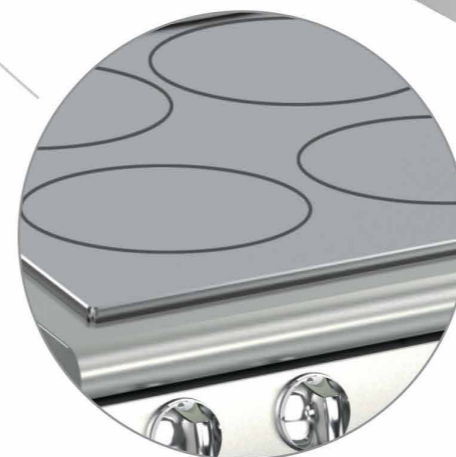
- Thermally insulated stainless steel cooking area (57.2x58x30 cm), equipped with 3 anti-tipping guides for 1/1 Gastronorm containers; large oven version 79x55x40 cm;
- perfectly insulated stainless steel door and inner door, fitted on heavy-duty self-balanced hinges;
- full length thermally insulated ergonomic handle;

Electric version

- Independently adjustable stainless steel heating elements on the top and below the cooking area base plate
- Thermostatic control of range temperature from 100°C to 300°C;
- "Powered appliance" indicator light;
- "Set temperature reached" indicating light



Thermostatically-regulated temperature range of 50 to 400°C.



4 separate cooking zones.