

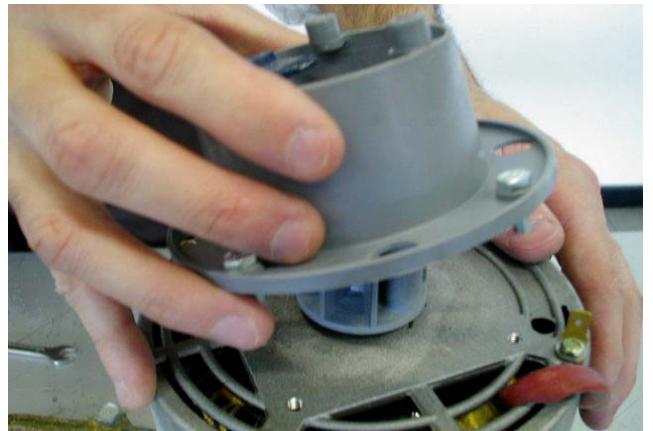
ELECTRONIC MODULAR FLAKERS
MF 41 - 51 - MFE 61

GEAR REDUCER REMOVAL AND REASSEMBLY
INSTRUCTIONS

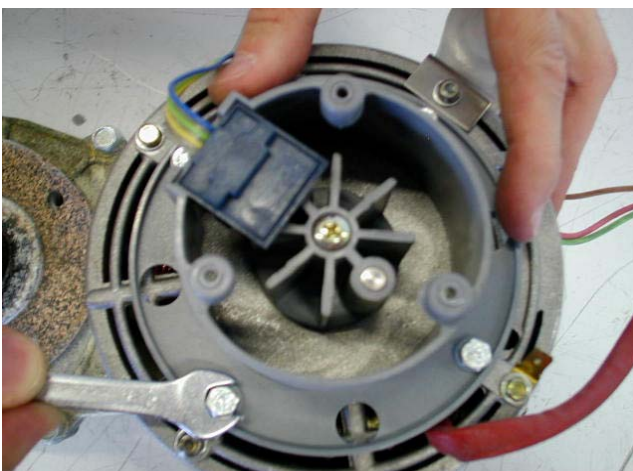
1. Unscrew the three screws securing the plastic cover



3.take off the entire plastic cover including the Hall Effect Sensor .



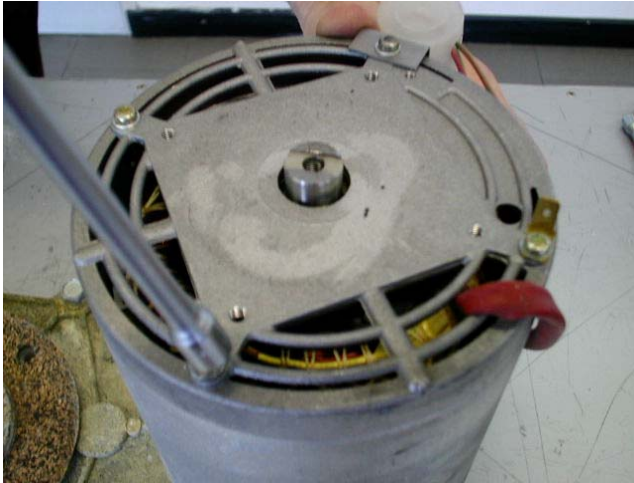
2. Unloose the four screws and



4. Unloose the screw securing the Magneto Holder Assy..



5. Unloose the four screw securing the Stator Assy then



6. ... rise up the Stator Assy and its cover.



7. Remove the entire Rotor Assy with its own fan blade and bearings .



8. Unloose the six screws of the Gear Case.

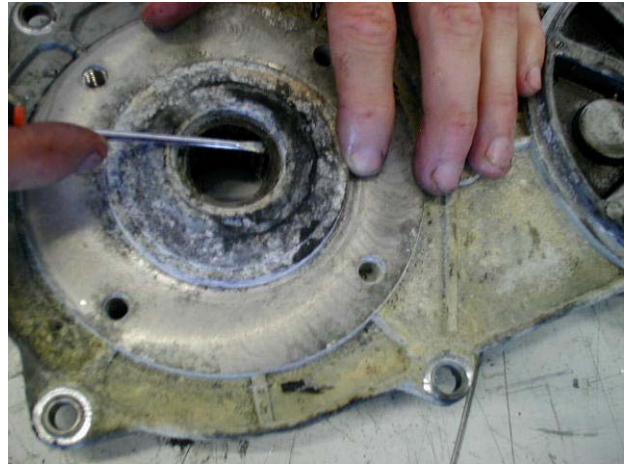


9. With the help of two screwdrivers rise up and remove the Gear Case Cover.

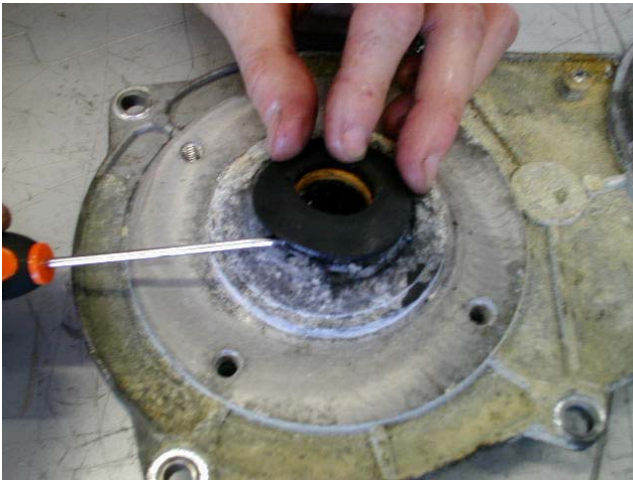




10. Remove the Gasket and ...



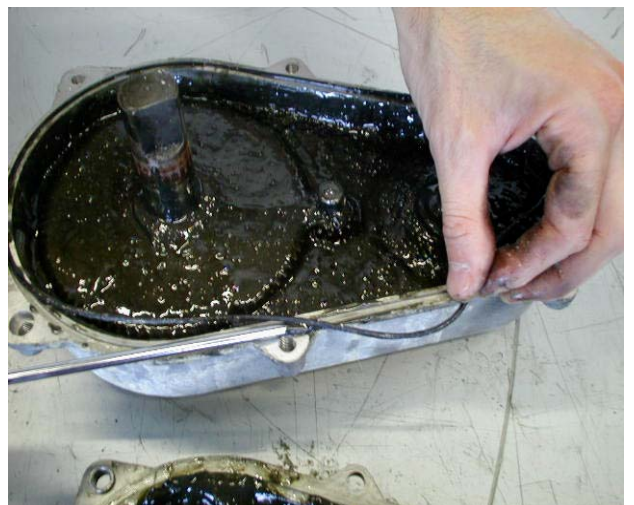
12. ... the grease seal located in the Rotor Shaft hole.



11.the two grease seals located on the Output Shaft hole of the Gear Case Cover as well as ...



13. Remove the O-Ring around the Gear Case.



14. Remove the Output Shaft and Gear with its own trust washers.



17. Clean and check the external condition of each single gear .



15. Remove the First Fiber Gear and Pinion with its own trust washers, then...



18. Clean away the old grease from the inner surface and check the conditions of the internal bearings of the Gear Case.



16. ... remove the Second Gear & Pinion with its own trust washers.



19. Check also the condition of the key located on the Output Shaft



20. After Cleaning, lubricate the roller bearings.



23. ... then one (1) roller bearing **p/n 02-1680-80** and one (1) trust washer **p/n 02-1681-00** on the Output Gear's housing



21. Install a new O-Ring around the Gear Case.



24. Place two trust washers (2) **p/n 03-1408-24** on the Second Gear's housing.



22. Place for first one (1) trust washer **p/n 02-1679-00** ...



25. Place one (1) trust washer **p/n 03-1408-24** on the First Fiber Gear's housing.



26. Install the Second Gear & Pinion into the Gear Case.



28. Place one (1) trust washer p/n 12-1681-00 on the Output Gear's Shaft.



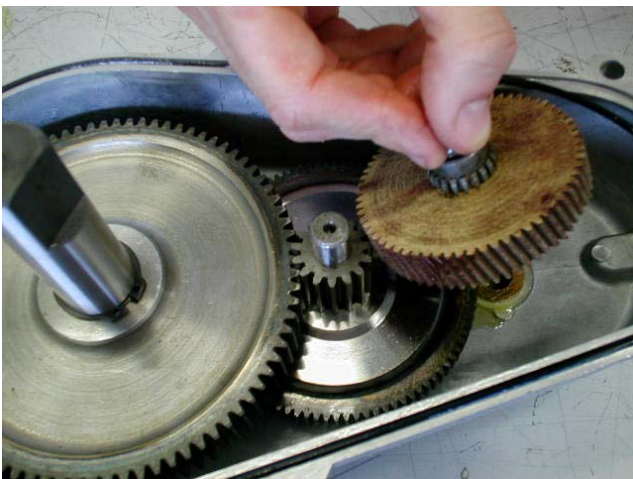
27. Install the Output Gear & Shaft and the First Fiber Gear & Pinion matching them with the Second Gear already placed.



29. Place one (1) trust washer p/n 03-1408-24 on the Second Gear's Shaft.



30. Place two (2) trust washers p/n 03-1408-24 on the First Fiber Gear's Shaft.



31. Pour in the Gear Case **600 Grams** of new grease **p/n 060294 01** .



34. Replace also the grease seal located on the Rotor hole, paying attention to have the " U " side facing down.



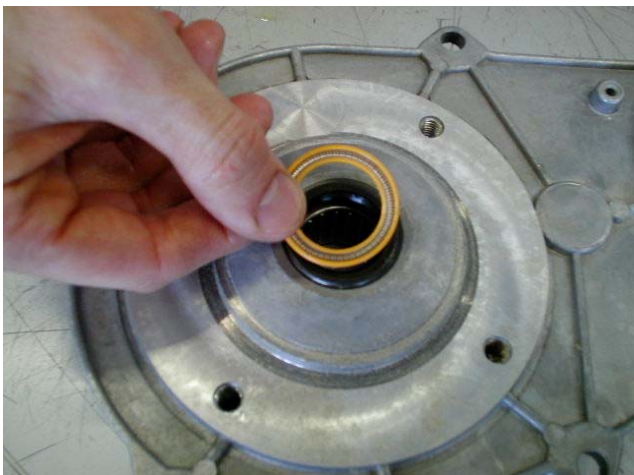
32. Install the first grease seal located on the Output Shaft hole of the Gear case cover with the "U" facing down, and ...



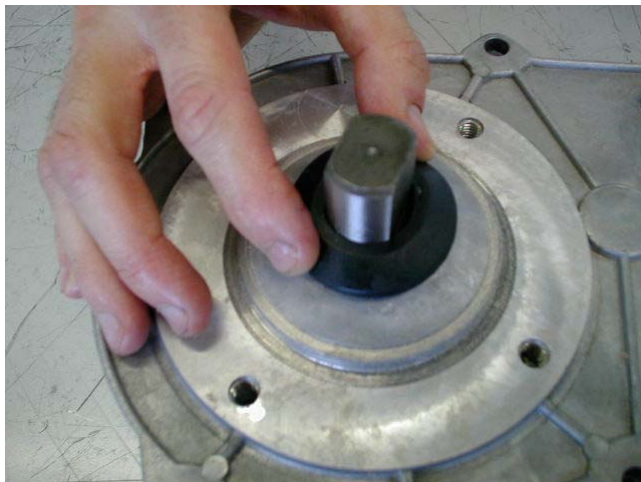
35. Close and tight the six screw of the Gear Case.



33. The second one with the "U" facing up .



36. Install a new gasket on the Output Shaft .



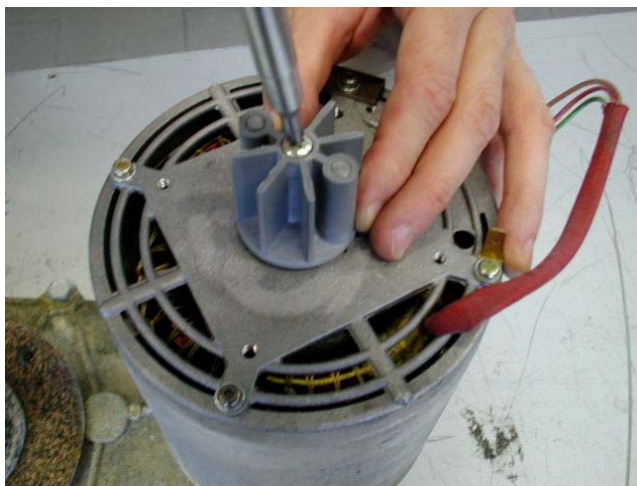
37. Install the Rotor Assy matching the lower bearing housing .



38. Place the Stator in its seat taking care to match the four holes of the bottom housing.



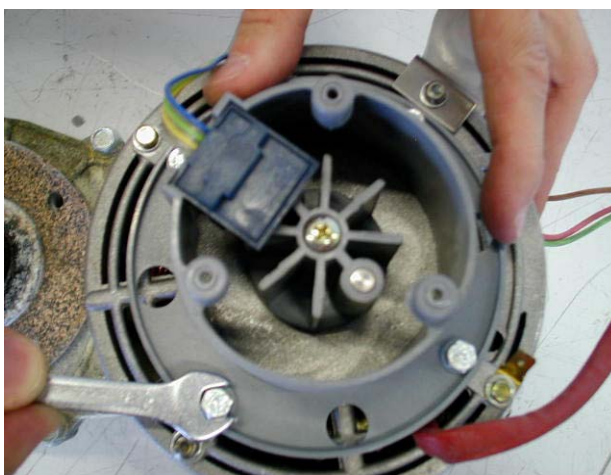
39. Place and tighten the screw securing the Magneto Holder Assy .



40. Tighten the four screws securing the Stator.



41. Place in the right position and tight the four screws of the plastic housing including the Hall Effect Sensor.



42. Check for proper rotation of the Rotor .

