



**MC 15 – MC 45**

**MF 51 – MF/MFE 61**

**MV 21 - MV 32 - MV 50**

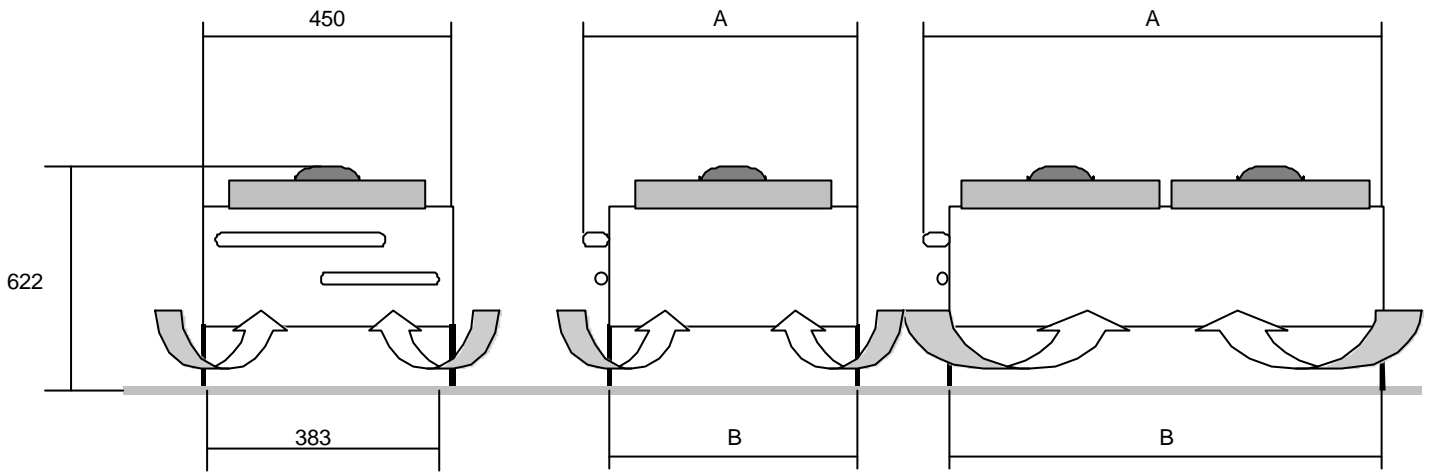
**MV 450 – MV 600**

**MV 1000**

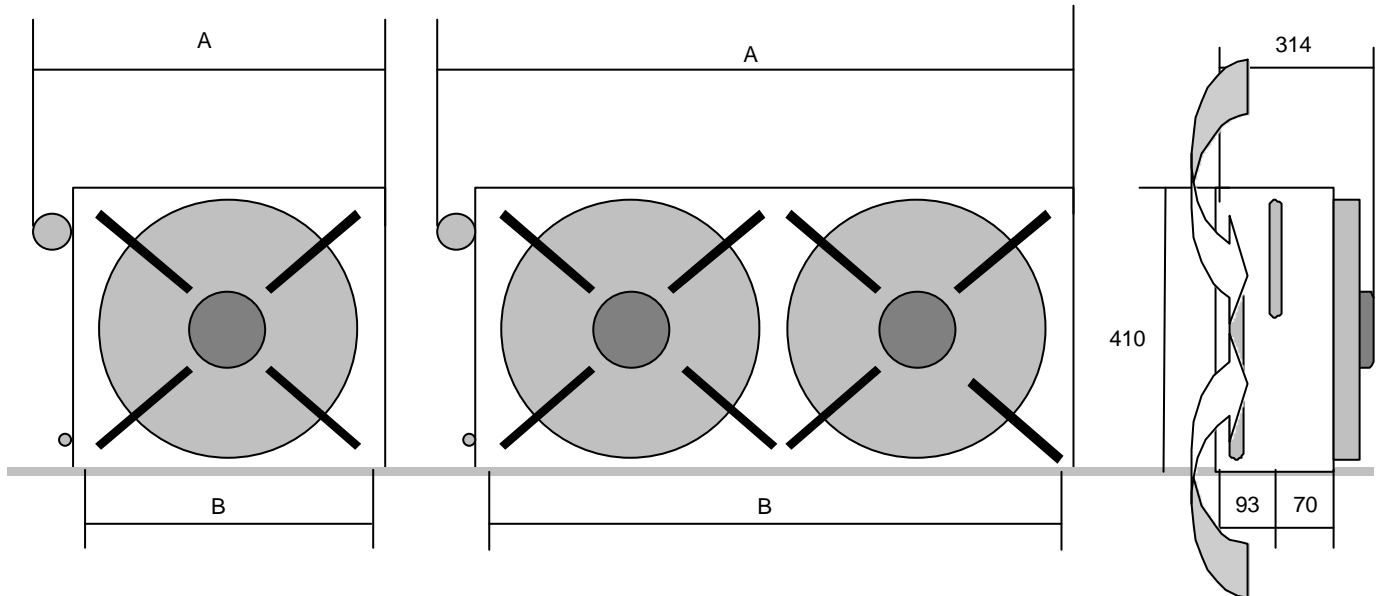
**WEATHER PROOF  
REMOTE AIR COOLED  
CONDENSER**

**SERVICE MANUAL**

## HORIZONTAL INSTALLATION



## VERTICAL INSTALLATION



	1 FAN MOTOR	2 FAN MOTORS
A mm	560	1340
B mm	439	1139

## WEATHER PROOF AIR COOLED REMOTE CONDENSER

The remote condenser versions of Cubers and Flakers are similar to the air cooled standard versions with the only difference of the remote condenser and, on MC and MF series, of the Fan Speed Control used to supply power to the fan motor/s.

### Technical specifications

1. Remote air cooled condenser fit on proper brackets for horizontal and vertical installation (MV series for vertical installation only).  
Cooling capacity with  $\Delta T$  15K is 3750 Kcal/hr on MC 15, MC 45, MF 51, MV 21, MV 32, MV 450, MV 600 and MV 1000; 7500 Kcal/hr on MC 1210 and MF 61; 5150 Kcal/hr on MV 50.
2. Fan motor/s 220-240/50-60/1 - 135 Watts - 0,6 Amps with IP 44 protection (against liquids and solids) and flow rate of 2150 m<sup>3</sup>/hr (2 motors on MC 1210 and MF 61).
3. On MC and MF series only, an Electronic Fan Speed Control set to 17÷18 bar. On MV series a standard ON-OFF hi pressure control (15÷17 bars).
4. Pre-charged refrigerant lines of 10 meters length equipped with AEROQUIP quick connections.
5. Hi pressure safety control (manual reset type) set to 34 bar on MC and MF series (in place of the condenser temperature sensor) and to 30 bar on MV series.
6. Hi pressure control warning light.

## Installation of the remote air cooled condenser and pre-charged refrigerant lines

### A. Location considerations:

Select the best available place protected from dirt/dust.

The weather proof remote air cooled condenser can be installed indoor as well as outdoor and can operate under the most different conditions (rain, wind, snow, etc.)

Use the following formula for planning the location of the condenser and ice machine.

### Location Limits – Condenser location must not exceed ANY of the following limits

Maximum vertical drop **dd** of 1 meter between the icemaker and the remote condenser.

Maximum vertical rise **rd** of 3 meters.

Physical line set maximum length between icemaker and remote condenser is 10 meters.

### Limit to max. one rise and one drop.

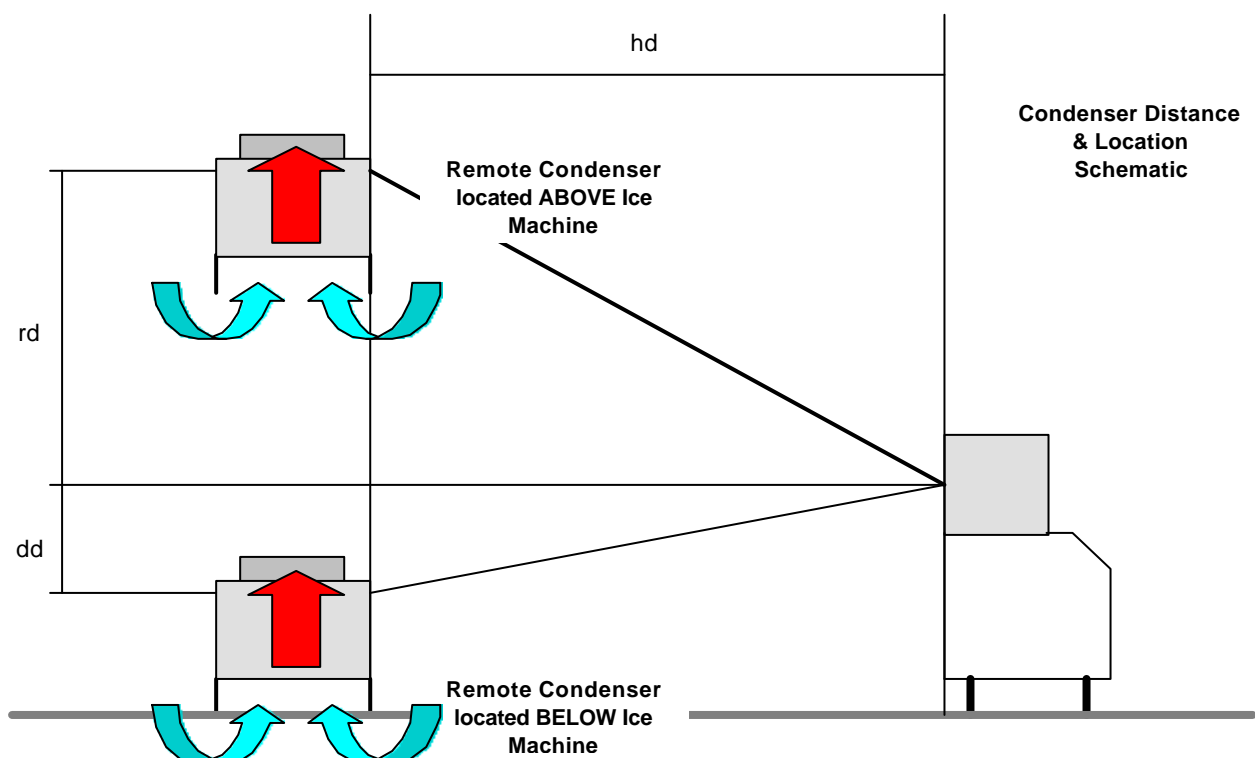
Limit the **calculated distance (CD)** as per the Calculation formula to 18 meters.

$$A = \text{Drop} = dd \times 6.6$$

$$B = \text{Rise} = rd \times 1.7$$

$$C = \text{Horizontal run} = hd \times 1$$

$$CD = A + B + C$$



**B. Unpacking and inspection:**

Visually inspect the exterior of the shipping container; any severe damage should be reported to the delivery carrier.

Uncrate the remote condenser and pre-charged refrigerant lines and inspect for any concealed damage. Notify carrier of any concealed damage. Check that the pre-charged refrigerant lines are intact, not kinked.

**C. Remote condenser installation**

Install and attach the remote condenser to the wall or to the floor of the building using methods and practices conform to the local building requirements.

Remove the control box cover from the remote condenser and connect the electrical power line coming from the unit following the wires colors.

**NOTE.** Cable connecting the unit to the remote condenser is under 230 Volts power so it is imperative to have the cable properly protected inside a plastic or metal tube according to the local electrical code/standard.

**D. Pre-charged refrigerant lines**

The set of pre-charged refrigerant lines consists of the 3/8" O.D. self sealing gas line and 1/4" O.D. self sealing liquid line both equipped with 1-20" UNEF AEROQUIP quick connections on MC 15-45, MF 51 and MV 21-32-MV 450-600.

On models MC 1210 and MF 61 the pre-charged refrigerant lines are 1/2" O.D. gas line and 3/8" O.D. liquid line both equipped with 1-20" UNEF AEROQUIP quick connections.

On model MV 50 only, 14 mm O.D. gas line and 1/2" O.D. liquid line with AEROQUIP quick connections too.

Whenever the length of the pre-charged refrigerant lines are longer then the distance between the ice maker and the remote condenser keep the excess portion indoor shaped as a vertical spiral so to avoid refrigerant trapping.

The parts numbers of the components are:

	<b>MC 15-45 - MF 51 MV 21-32 MV 450-600-1000</b>	<b>MC 1210 MF 61</b>	<b>MV 50</b>
Remote air cooled condenser & fan motor assy	620418 00	620418 01	CM 19177506
Fan motor assy - LU.VE.-CONTARDO	001028 30	001028 30	001028 30
Fan motor assy - ECO	001028 32	001028 32	
Hi pressure control (safety)	620231 01	620231 01	CM 19550653
Fan speed control/Electronic device	620417 00	620417 00	*****
Fan pressure control	CM 19550624	*****	CM 19550624
Low pressure control	*****	*****	CM 19550608
Liquid receiver	CM 19635339	*****	*****
AEROQUIP male connection	650438 01	650438 00	650438 00
AEROQUIP female connection	650437 01	650437 01	650437 00

**CAUTION. Each coupling on the pre-charged refrigerant lines is self-sealed and should be tightened 1/4 turn more then snug tight. ALWAYS USE TWO WRANCHES WHEN TIGHTENING THESE FITTINGS, ONE AS BACKUP WRENCH TO PREVENT TWISTING OF TUBING AND POSSIBLE KINKING OR LINE RUPTURE.**

Connect the gas line coupling to the remote condenser refrigerant fitting (abelled GAS) and to the refrigerant fitting on the rear side of the ice machine.

Connect the liquid line coupling to the remote condenser refrigerant fitting (labelled LIQUID) and to the refrigerant fitting on the rear side of the ice machine.

**ATTENTION. The inlet of the remote air cooled condenser (gas) must be always located above the outlet (liquid) for both horizontal and vertical installations.**

**Operating instructions**

The remote air cooled condenser versions of Cubers and Falkers are operating in the same way as the standard machine.

The only difference is the operation of the fan motor on MC and MF series as on the remote condenser versions it is no longer possible to use the condenser sensor to control the ON-OFF operation of the same.

In place of the condenser sensor has been installed an electronic fan speed control and a manual reset type hi pressure control.

The fan speed control (consisting of a combination of a standard hi pressure control with an electronic device) supplies a variable power to the fan motor so to modulate its speed and keep to a constant value the discharge pressure.

Correct adjustment of the fan speed control is 17÷18 bar with the adjusting screw of the electronic device set at the "MIN" label position.

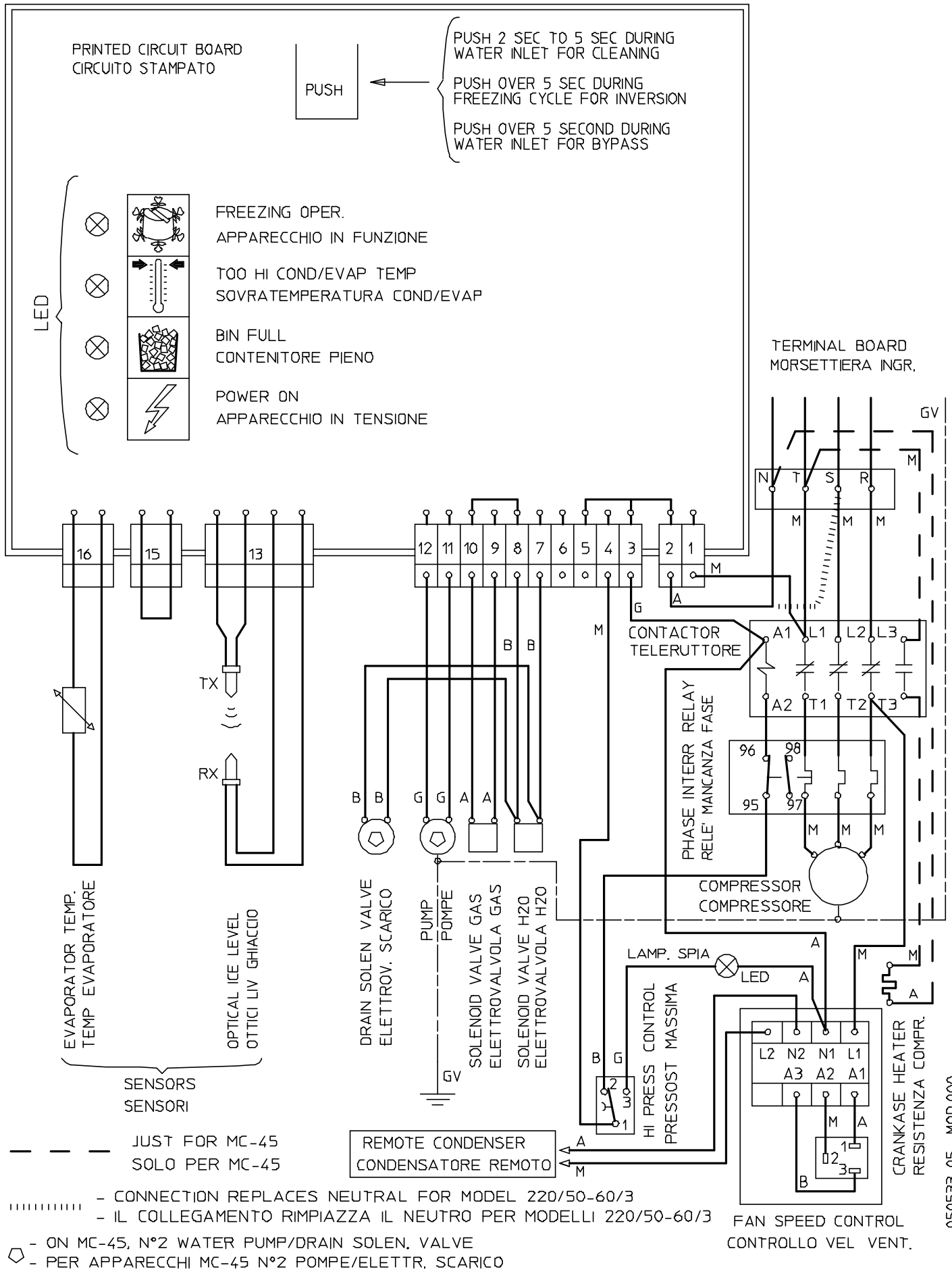
The hi pressure control is used only as a safety device to switch OFF the operation of the machine in case of fan motor failure.



WIRING DIAGRAM (MACHINE OPERATING)  
 SCHEMA ELETTRICO (MACCHINA IN FUNZIONE)

MC-15/-45 400/50/3+N  
 220/50/3  
 REMOTE CONDENSER

B - WHITE	BIANCO
G - GREY	GRIGIO
N - BLACK	NERO
A - BLUE	AZZURRO
M - BROWN	MARRONE
GV - YELLOW GREEN	GIALLO VERDE

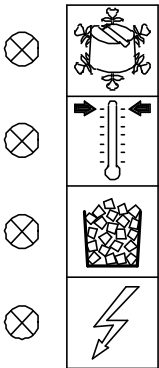


PRINTED CIRCUIT BOARD  
 CIRCUITO STAMPATO

PUSH

PUSH 2 SEC TO 5 SEC DURING  
 WATER INLET FOR CLEANING  
 PUSH OVER 5 SEC DURING  
 FREEZING CYCLE FOR INVERSION  
 PUSH OVER 5 SECOND DURING  
 WATER INLET FOR BYPASS

LED



FREEZING OPER.  
 APPARECCHIO IN FUNZIONE  
 TOO HI COND/EVAP TEMP  
 SOVRATEMPERATURA COND/EVAP  
 BIN FULL  
 CONTENITORE PIENO  
 POWER ON  
 APPARECCHIO IN TENSIONE

TERMINAL BOARD  
 MORSETTIERA INGR.

EVAPORATOR TEMP.  
 TEMP EVAPORATORE

OPTICAL ICE LEVEL  
 OTTICI LIV GHIACCIO

SENSORS  
 SENSORI

DRAIN SOLEN VALVE  
 ELETTROV. SCARICO

PUMP  
 POMPE

SOLENOID VALVE GAS  
 ELETTROVALVOLA GAS

SOLENOID VALVE H2O  
 ELETTROVALVOLA H2O

REMOTE CONDENSER  
 CONDENSATORE REMOTO

CONTACTOR  
 TELERUTTORE

PHASE INTERR RELAY  
 RELE' MANCANZA FASE

COMPRESSOR  
 COMPRESSORE

LAMP. SPIA  
 LED

HI PRESS CONTROL  
 PRESSOST MASSIMA

CRANKCASE HEATER  
 RESISTENZA COMPR.

--- JUST FOR MC-45  
 SOLO PER MC-45

..... - CONNECTION REPLACES NEUTRAL FOR MODEL 220/50-60/3

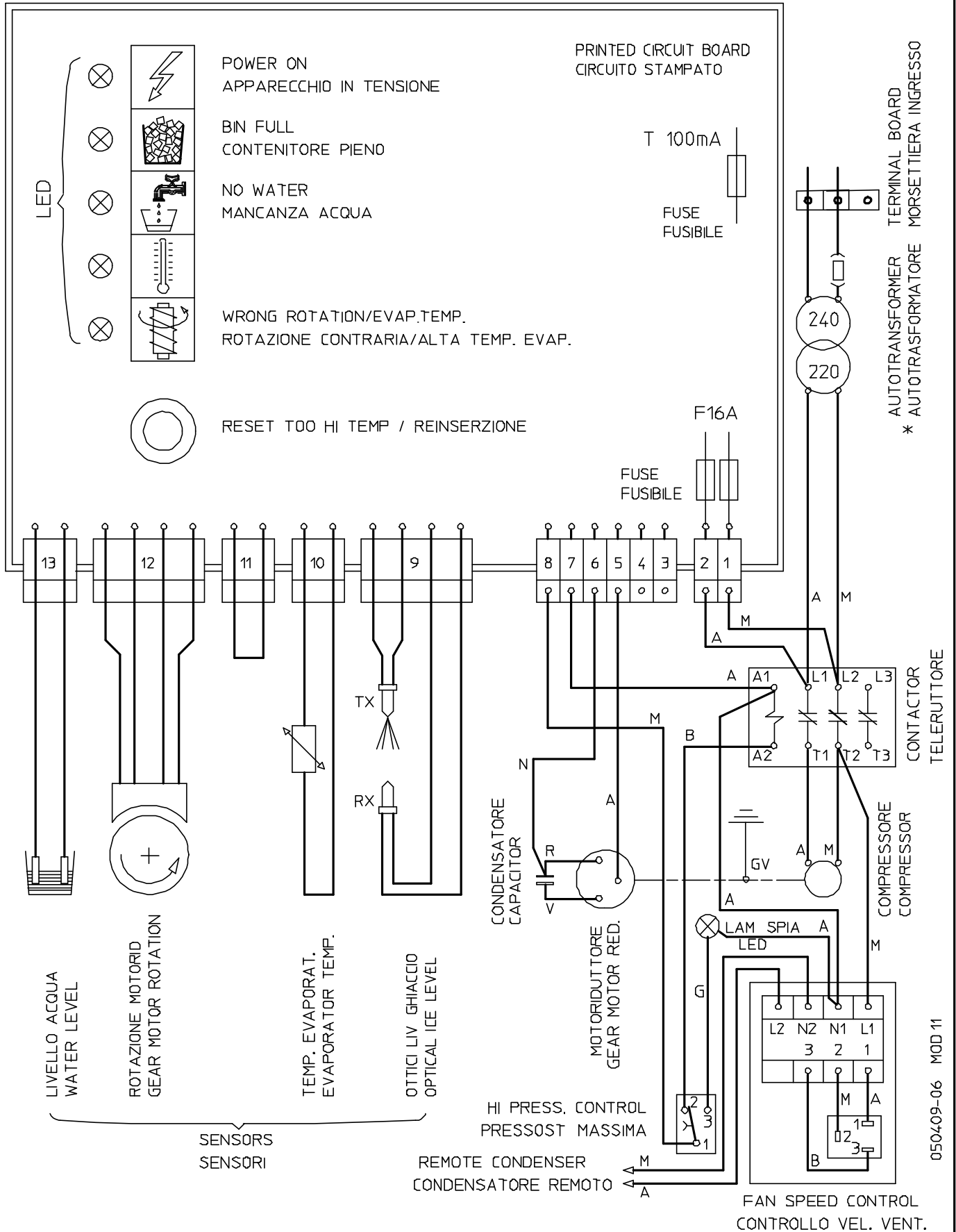
..... - IL COLLEGAMENTO RIMPIAZZA IL NEUTRO PER MODELLI 220/50-60/3

- - ON MC-45, N°2 WATER PUMP/DRAIN SOLEN. VALVE
- ◊ - PER APPARECCHI MC-45 N°2 POMPE/ELETT. SCARICO

FAN SPEED CONTROL  
 CONTROLLO VEL. VENT.

WIRING DIAGRAM (MACHINE OPERATING)  
 SCHEMA ELETTRICO (MACCHINA IN FUNZIONE)

GV - YELLOW GREEN	GIALLO VERDE
B - WHITE	BIANCO
G - GREY	GRIGIO
N - BLACK	NERO
A - BLUE	AZZURRO
M - BROWN	MARRONE
V - GREEN	VERDE

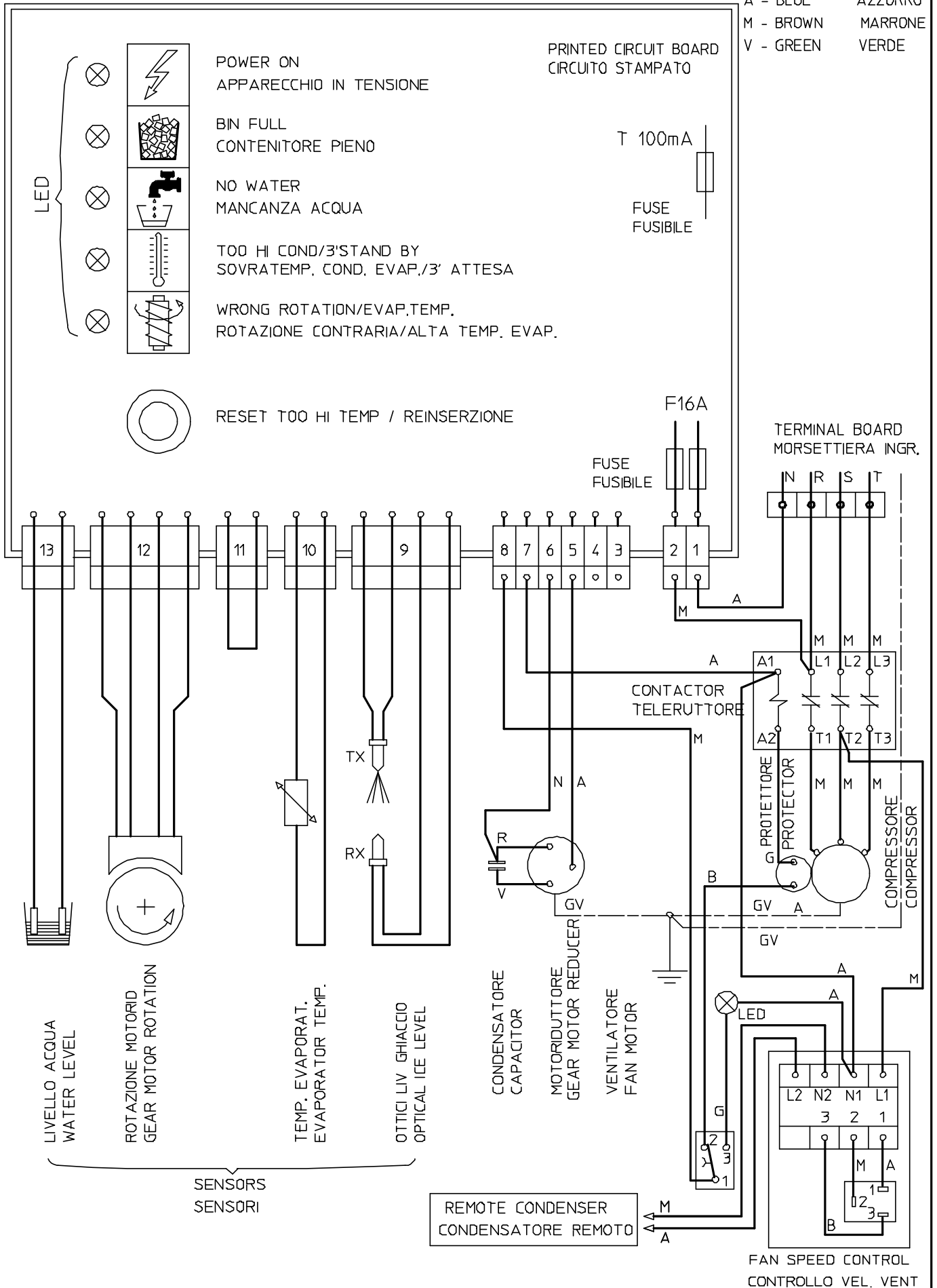


USED ONLY UNIT AT 240V  
 \* SOLO PER APPARECCHI A 240V

WIRING DIAGRAM (MACHINE OPERATING)  
 SCHEMA ELETTRICO (MACCHINA IN FUNZIONE)

MF-51 380/50/3+N  
 REMOTE CONDENSER

GV - YELLOW GREEN	GIALLO VERDE
B - WHITE	BIANCO
G - GREY	GRIGIO
N - BLACK	NERO
A - BLUE	AZZURRO
M - BROWN	MARRONE
V - GREEN	VERDE



- LED
- ⊗ POWER ON  
APPARECCHIO IN TENSIONE
- ⊗ BIN FULL  
CONTENITORE PIENO
- ⊗ NO WATER  
MANCANZA ACQUA
- ⊗ TOO HI COND./3' STAND BY  
SOVRATEMP. COND. EVAP./3' ATTESA
- ⊗ WRONG ROTATION/EVAP. TEMP.  
ROTAZIONE CONTRARIA/ALTA TEMP. EVAP.

○ RESET TOO HI TEMP / REINSERZIONE

LIVELLO ACQUA  
WATER LEVEL

ROTAZIONE MOTORID  
GEAR MOTOR ROTATION

TEMP. EVAPORAT.  
EVAPORATOR TEMP.

OTTICI LIV GHIACCIO  
OPTICAL ICE LEVEL

SENSORS  
SENSORI

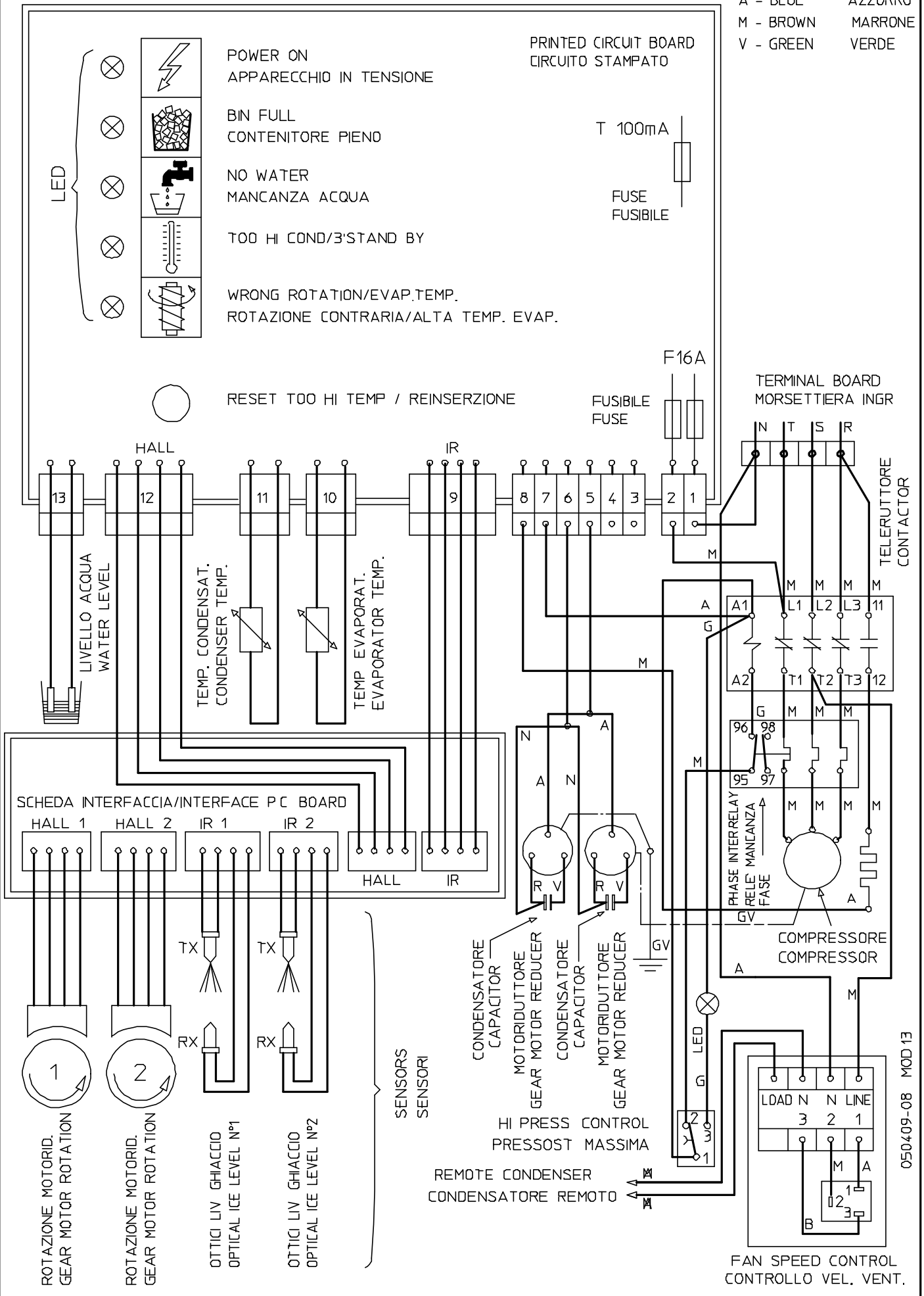
REMOTE CONDENSER  
CONDENSATORE REMOTO

FAN SPEED CONTROL  
CONTROLLO VEL. VENT

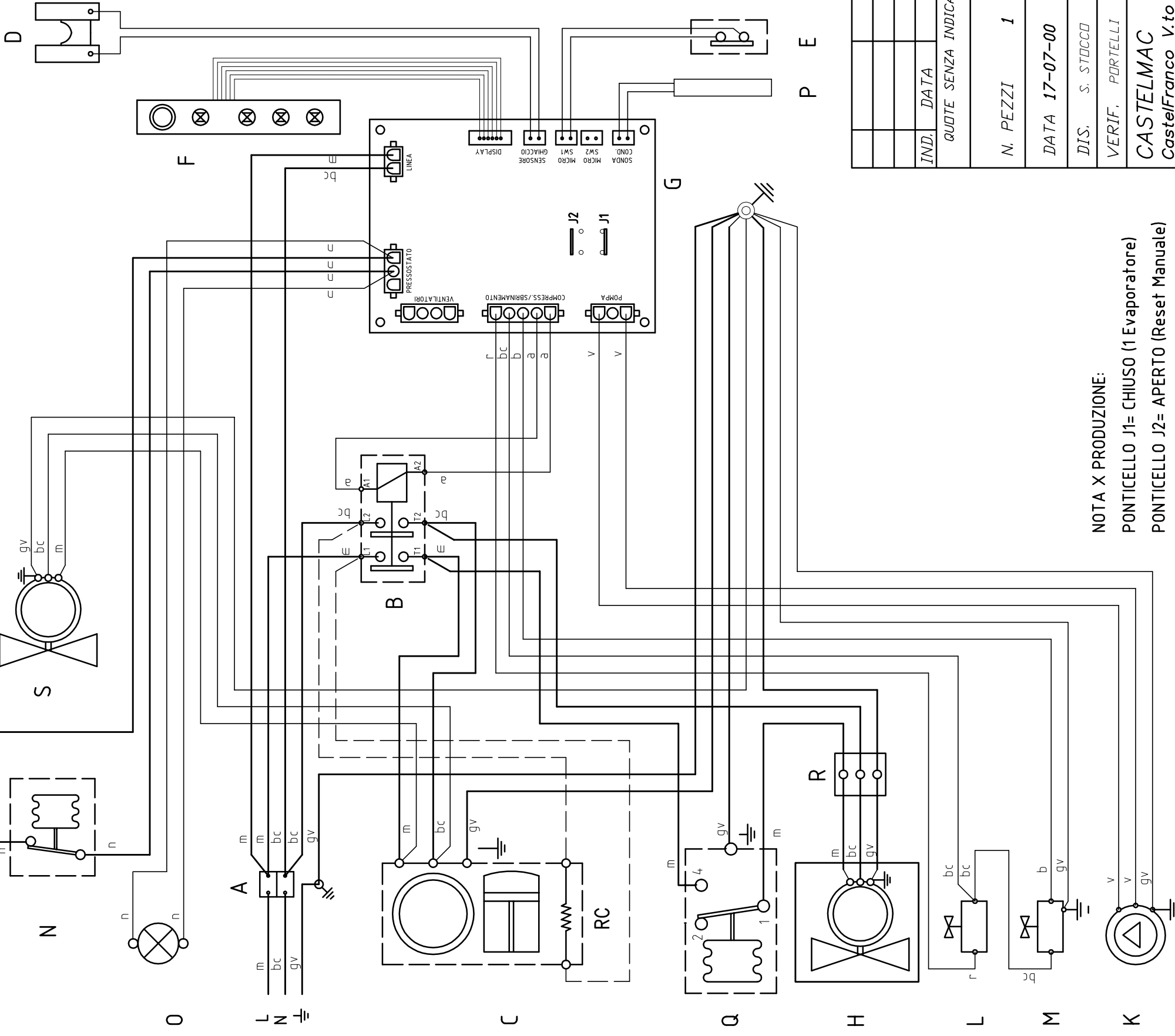
WIRING DIAGRAM (MACHINE OPERATING)  
 SCHEMA ELETTRICO (MACCHINA IN FUNZIONE)

GV - YELLOW GREEN GIALLO VERDE

B - WHITE BIANCO  
 G - GREY GRIGIO  
 N - BLACK NERO  
 A - BLUE AZZURRO  
 M - BROWN MARRONE  
 V - GREEN VERDE



A TERMINI DI LEGGE LA 'CASTELMAC' SI RISERVA LA PROPRIETA' ESCLUSIVA DEL PRESENTE DISEGNO CHE NON DEVE ESSERE RIPRODOTTO O TRASMESSO A TERZI SENZA AUTORIZZAZIONE



**LEGENDA COMPONENTI**

A = MORSETTIERA INGRESSO  
 B = TELERUTTORE COMPRESSORE  
 C = COMPRESSORE  
 D = SENSORE GHIACCIO  
 E = MICRO FINE SBRINAMENTO  
 F = SCHEDA LED  
 G = SCHEDA ELETTRONICA  
 H = VENTILATORE CONDENSATORE REMOTO  
 J1 = PONTICELLO EVAPORATORI  
 J2 = PONTICELLO RESET AUTOM.  
 K = ELETTROPOMPA  
 L = ELETTROPOMPA  
 M = ELETTROVALVOLA SCARICO ACQUA  
 N = ELETTROVALVOLA GAS CALDO  
 O = PRESSOSTATO DI MASSIMA  
 P = SPIA LUMINOSA ALLARME  
 Q = Sonda TEMPERATURA CONDENSATORE  
 R = PRESSOSTATO VENTILATORE  
 S = SCATOLA COLLEGAMENTO VENTILATORE  
 RC = VENTILATORE COMPRESSORE  
 RC = RESISTENZA RISCALD. CARTER COMPRESSORE

**TABLE OF COMPONENTS**

A = INPUT TERMINAL BOARD  
 B = COMPRESSOR REMOTE CONTROL SWITCH  
 C = COMPRESSOR  
 D = ICE SENSOR  
 E = END DEFROSTING SWITCH  
 F = LED CARD  
 G = ELECTRONIC CARD  
 H = REMOTE CONDENSER FAN  
 J1 = EVAPORATORS SWITCH  
 J2 = AUTOMATIC RESET SWITCH  
 K = WATER PUMP  
 L = WATER PUMP  
 M = WATER DISCHARGE VALVE  
 N = HOT GAS VALVE  
 O = MAX PRESSURE SWITCH  
 P = MAX PRESSURE SIGNAL  
 Q = CONDENSER TEMPERATURE PROBE  
 R = FAN PRESSURE SWITCH  
 S = FAN CONNECTION BOX  
 RC = COMPRESSOR FAN  
 RC = CARTER COMPRESSOR HEATING RESISTANCE

**SEZIONE-COLORE CAM/CABLE SECTIONS-COLOURS**

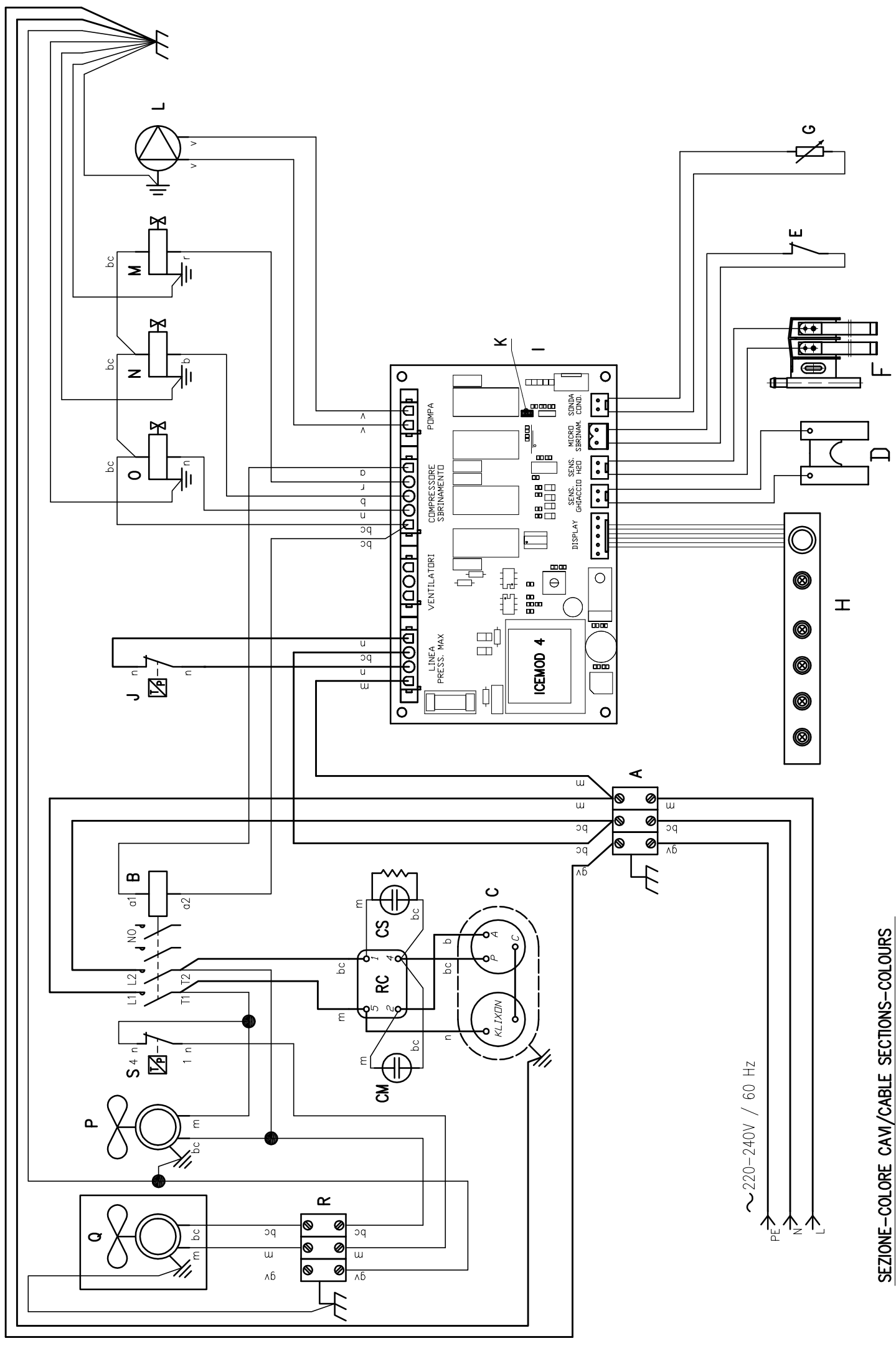
\_\_\_\_\_ 1 mmq \_\_\_\_\_ 1.5 mmq

m = marrone	m = brown
bc = blu chiaro	bc = light blue
gv = giallo/verde	gv = yellow/green
b = bianco	b = white
n = nero	n = black
r = rosso	r = red
a = arancione	a = orange
v = viola	v = purple

NOTA X PRODUZIONE:  
 PONTICELLO J1= CHIUSO (1 Evaporatore)  
 PONTICELLO J2= APERTO (Reset Manuale)

IND.	DATA	MODIFICHE	DIS.	VERIF. COMUNIC.
QUOTE SENZA INDICAZIONE DI TOLLERANZA GRADO DI PRECISIONE MEDIO UNI ISO 2768 m				
FORI TOLLERANZA + ALBERI TOLLERANZA -				
1562CT				
GRADO DI LAVORAZ.				
N. PEZZI	1	MATERIALE		
DATA	17-07-00	TRATT. SUPERFICIALE		
DIS.	S. STOCCHI	TRATT. TERMICI		
VERIF.	PORTELLI	PESD		
CASTELMAC		SCHEMA ELETTRICO		
CastelFranco V.to		ASS. KIT ELETTRICO		
		MODULARE 200 - 300 SPLIT		
		SCHEMA ELETTRICO		
		ASS. KIT ELETTRICO		
		SCALA 1:1		
		1 2 3 4 5 6 7 8 9		
		CODICE N°		
		71510210/0		

A TERMINI DI LEGGE LA "CASTELMAC" SI RISERVA LA PROPRIETA' ESCLUSIVA DEL PRESENTE DISEGNO CHE NON DEVE ESSERE RIPRODOTTO O TRASMESSO A TERZI SENZA AUTORIZZAZIONE



SEZIONE-COLORE CAV/CABLE SECTIONS-COLOURS

\_\_\_\_\_ 1 mmq \_\_\_\_\_ 1.5 mmq

m	marrone	brown
bc	blu chiaro	light blue
gv	giallo/verde	yellow/green
b	bianco	white
n	nero	black
r	rosso	red
a	arancio	orange
v	viola	purple

NOTA X PRODUZIONE:

PONTICELLO K= APERTO (Reset Automatico)

A	MORSETTIERA INGRESSO INPUT TERMINAL BOARD
B	TELERUTTORE COMPRESSORE COMPRESSOR CONTACTOR
C	COMPRESSORE COMPRESSOR
D	SENSORE GHIACCIO ICE SENSOR
E	MICRO FINE SBRINAMENTO END DEFROSTING SWITCH
F	SENSORE LIVELLO ACQUA WATER LEVEL SENSOR
G	SONDA TEMPERATURA CONDENSATORE CONDENSER TEMPERATURE PROBE
H	SCHEDA LED LED CARD
I	SCHEDA ELETTRONICA ELECTRONIC CARD
J	PRESSOSTATO DI MASSIMA MAX PRESSURE SWITCH
K	PONTICELLO RESET AUTOMATICO AUTOMATIC RESET SWITCH
L	ELETTROPOMPA WATER PUMP
M	ELETTROVALVOLA CARICO ACQUA WATER INLET VALVE
N	ELETTROVALVOLA SCARICO ACQUA WATER DISCHARGE VALVE
O	ELETTROVALVOLA GAS CALDO HOT GAS VALVE
P	VENTILATORE COMPRESSORE COMPRESSOR FAN MOTOR
Q	VENTILATORE CONDENSATORE RMOTO REMOTE CONDENSER FAN MOTOR
R	MORSETTIERA VENTILATORE REMOTO TERMINAL BOARD REMOTE FAN MOTOR
S	PRESSOSTATO VENTILATORE FAN PRESSURE SWITCH
RC	RELE' COMPRESSORE COMPRESSOR RELAY
CS	CONDENSATORE SPUNTO START CONDENSER
CM	CONDENSATORE MARCIA RUN CONDENSER

IND.	DATA	MODIFICHE	DIS.	VERIF.	COMUNIC.			
QUOTE SENZA INDICAZIONE DI TOLLERANZA + FORI TOLLERANZA -		GRADO DI PRECISIONE MEDIO UNI ISO 2768 m	3470CT					
MATERIALE		GRADO DI LAVORAZ.						
N. PEZZI	1	TRATT. SUPERFICIALE		TRATT. TERMICI				
DATA	06-11-02	MDD. 450-600 SPLIT						
DIS.	STOCCO	SCHEMA ELETTRICO						
VERIF.	PORTELLI	CASTELMAC						
CastelFranco V.to		ASS.						
CODICE N°		71510259/0						
SCALA 1:1								
1	2	3	4	5	6	7	8	9

### LEGENDA COMPONENTI

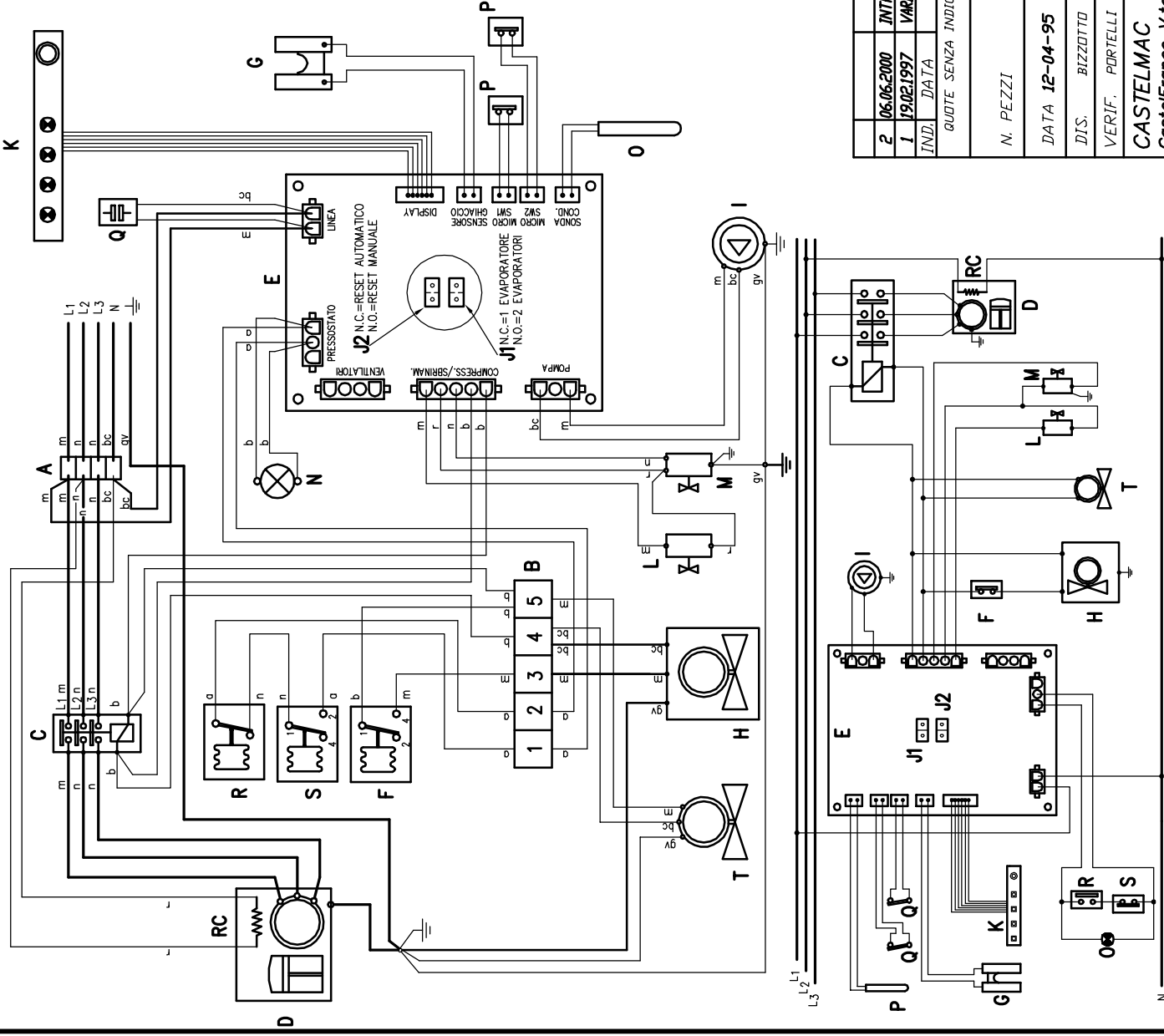
- A = MORSETTIERA INGRESSO
- B = MORSETTIERA PRINCIPALE
- C = TELELUTTORE COMPRESSORE
- D = COMPRESSORE
- E = SCHEDA ELETTRONICA
- F = PRESSOSTATO VENTILATORE SPLIT
- G = SENSORE GHIACCIO
- H = PONTICELLO EVAPORATORI
- J1 = PONTICELLO EVAPORATORI
- J2 = PONTICELLO RESET AUTOM.
- K = SCHEDA LED
- I = ELETTROPOMPA
- L = ELETTROVALVOLA SCARICO ACQUA
- M = ELETTROVALVOLA GAS CALDO
- N = SPIA LUMINOSA
- O = SONDA TEMPERATURA CONDENS.
- P = MICRO FINE SBRINAMENTO
- Q = FILTRO ANTIDISTURBI
- R = PRESSOSTATO DI MASSIMA
- S = PRESSOSTATO DI MINIMA
- T = VENTILATORE COMPRESSORE
- RC = RESISTENZA RISCALD. CARTER COMPRESSORE

### TABLE OF COMPONENTS

- A = INPUT TERMINAL BOARD
- B = MAIN TERMINAL BOARD
- C = COMPRESSOR REMOTE CONTROL SWITCH
- D = COMPRESSOR
- E = ELECTRONIC BOARD
- F = FAN PRESSURE SWITCH
- G = ICE SENSOR
- H = FAN MOTOR
- J1 = EVAPORATORS SWITCH
- J2 = AUTOMATIC RESET SWITCH
- K = LEDS CARD
- I = WATER PUMP
- L = WATER DISCHARGE VALVE
- M = HOT GAS VALVE
- N = MAX PRESSURE SIGNAL
- O = CONDENSER TEMP. PROBE
- P = END DEFROSTING SWITCH
- Q = SUPPRESSOR FILTER
- R = MAX PRESSURE SWITCH
- S = LOW PRESSURE SWITCH
- T = COMPRESSOR FAN
- RC = CARTER COMPRESSOR HEATING RESISTANCE

### SEZIONE-COLORE CAVI/CABLE SECTIONS-COLOURS

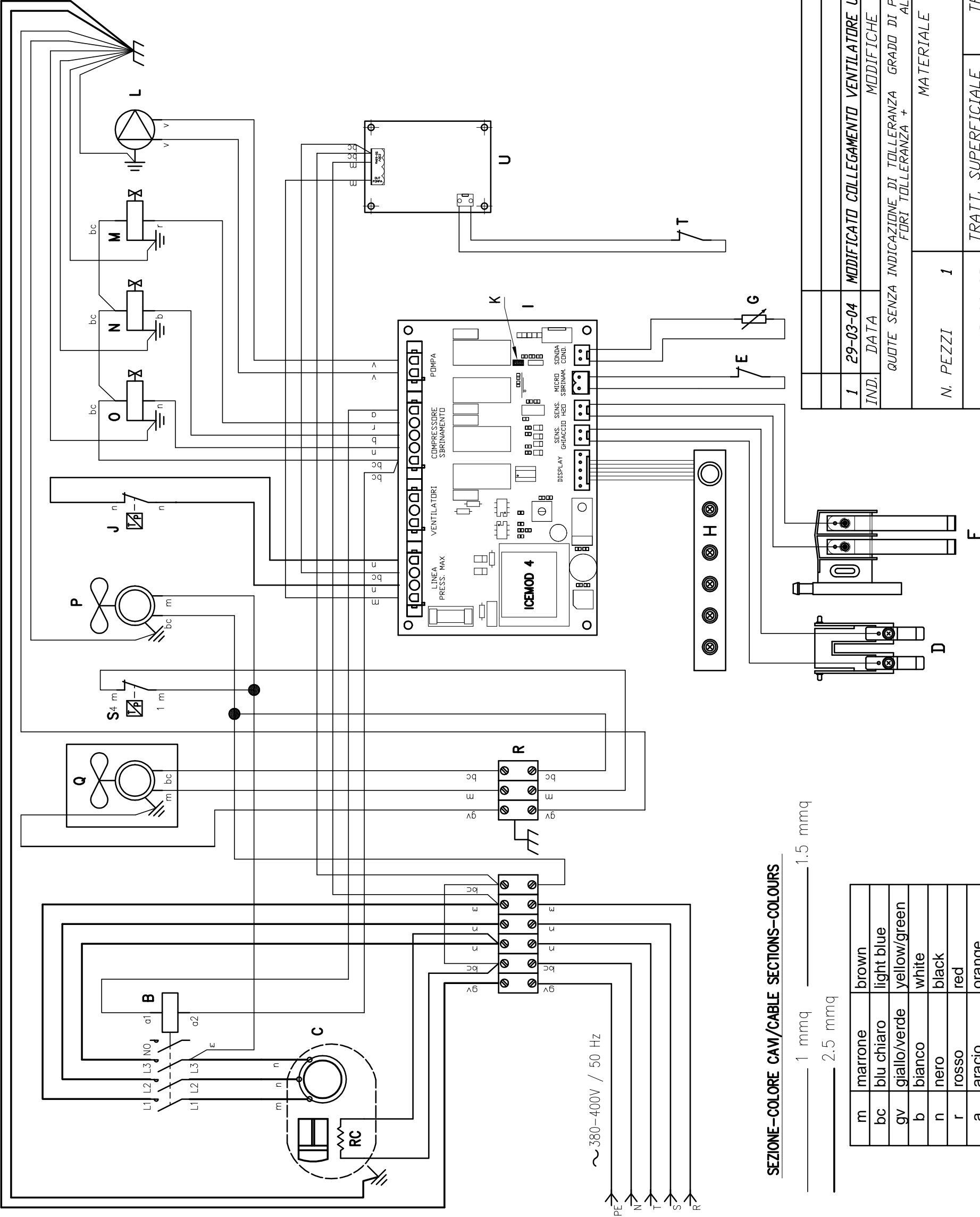
- \_\_\_\_\_ 1 mmq \_\_\_\_\_ 1.5 mmq
- m = marrone
- bc = blu chiaro
- gv = giallo/verde
- b = bianco
- n = nero
- r = rosso
- a = arancione
- m = brown
- bc = light blue
- gv = yellow/green
- b = white
- n = black
- r = red
- a = orange



2	06.06.2000	INTRODOTTO NUOVA SCHEDA ELETTRONICA ICENDD3	STACCO PORTELLI	2757CT
1	19.02.1997	VARIATI COLORI CAVI TIMER POMPA DA MARRONE A ROSSO E DA GRIGIO A NERO	BIZZOTTO PORTELLI	1496CT
IND.	DATA	MODIFICHE	DJS. VERIF. COMUNIC.	659CT
GUIDE SENZA INDICAZIONE DI TOLLERANZA GRADO DI PRECISIONE MEDIO UNI ISO 2768 m				
FDR TOLLERANZA +				
MATERIALE				
GRADO DI LAVORAZ.				
PESO				
TRATT. SUPERFICIALE				
TRATT. TERMICI				
DATA 12-04-95				
DIS. BIZZOTTO				
VERIF. PORTELLI				
CASTELMAC				
CastelFranco V.to				
MODULARE 500 SPLIT				
ISTRUZIONE CABLAGGIO				
VERS. ICENDD3 380-400V/3N/50Hz				
SCALA 1:25				
1 2 3 4 5 6 7 8 9				
CODICE N°				
71510055/0				

A TERMINI DI LEGGE LA "CASTELMAC" SI RISERVA LA PROPRIETA' ESCLUSIVA DEL PRESENTE DISEGNO CHE NON DEVE ESSERE RIPRODOTTO O TRASMESSO A TERZI SENZA AUTORIZZAZIONE

A	MORSETTIERA INGRESSO INPUT TERMINAL BOARD
B	TELERUTTORE COMPRESSORE COMPRESSOR REMOTE CONTROL SWITCH
C	COMPRESSORE COMPRESSOR
D	SENSORE GHIACCIO ICE SENSOR
E	MICRO FINE SBRINAMENTO END DEFROSTING SWITCH
F	SENSORE LIVELLO ACQUA WATER LEVEL SENSOR
G	SONDA TEMPERATURA CONDENSATORE CONDENSER TEMPERATURE PROBE
H	SCHEDA LED LED CARD
I	SCHEDA ELETTRONICA ELECTRONIC CARD
J	PRESSOSTATO DI MASSIMA MAX PRESSURE SWITCH
K	PONTELLINO RESET AUTOMATICO AUTOMATIC RESET SWITCH
L	ELETTROPOMPA WATER PUMP
M	ELETTROVALVOLA CARICO ACQUA WATER INLET VALVE
N	ELETTROVALVOLA SCARICO ACQUA WATER DISCHARGE VALVE
O	ELETTROVALVOLA GAS CALDO HOT GAS VALVE
P	VENTILATORE COMPRESSORE COMPRESSOR FAN MOTOR
Q	VENTILATORE CONDENSATORE REMOTO REMOTE CONDENSER FAN MOTOR
R	MORSETTIERA VENTILATORE REMOTO TERMINAL BOARD REMOTE FAN MOTOR
RC	RESISTENZA RISCALDAMENTO CARTER COMPRESS. CRANKCASE HEATER
S	PRESSOSTATO VENTILATORE REMOTE FAN PRESSURE SWITCH
T	INTERRUTTORE RISCALDAMENTO CARTER SWITCH CRANKCASE
U	SCHEDA ELETTRONICA RITARDO AVVIAMENTO START DELAY ELECTRONIC BOARD



**SEZIONE - COLORE CAVI/CABLE SECTIONS-COLOURS**

1 mmq \_\_\_\_\_ 1.5 mmq  
 2.5 mmq \_\_\_\_\_

m	marrone	brown
bc	blu chiaro	light blue
gv	giallo/verde	yellow/green
b	bianco	white
n	nero	black
r	rosso	red
a	arancio	orange
v	viola	purple

NOTA X PRODUZIONE:

PONTELLINO K= APERTO (Reset Automatico)

1	29-03-04	MODIFICATO COLLEGAMENTO VENTILATORE U.C.	STOCCO PORTELLI	4047CT
IND.	DATA	MODIFICHE	DIS.	VERIF. COMUNIC.
QUOTE SENZA INDICAZIONE DI TOLLERANZA FUORI TOLLERANZA +		GRADO DI PRECISIONE MEDIO UNI ISO 2768 m		3604CT
MATERIALE		GRADO DI LAVOAZ.		
N. PEZZI	1	PESO		
DATA	19-06-03	TRATT. SUPERFICIALE		
DIS.	S. STOCCO	MDD. 1000 SPLIT		
VERIF.	PORTELLI	SCHEMA ELETTRICO 380-400/50/3N		
CASTELMAC CastelFranco V.to		ASS. KIT ELETTRICO		
		71510309/0		